

Large Screen Displays



	E Series							
NEC Model Number	E328	E438	E498	E558	E658	E758	E868	E988
MAP in USD	\$535	\$673	\$809	\$901	\$1,069	\$2,089	\$2,846	\$7,831
LCD Size	32"	43"	49"	55"	65"	75"	86"	98"
Native Resolution	1920 x 1080			3840 x 2160				
Runtime	16/7				18/7		24/7	
Contrast Ratio (typical)	8000:1 (Out of box conditions, local dimming ON)					1200:1 (without local dimming)		
Brightness	400 cd/m ²							
Refresh Rate	60Hz							
Power Consumption (typical)	31W	72W	109W	105W	144W	145W	205W	200W
Expansion Compatible	All OPS PC's when coupled with the OPS-DOCK							
Dimensions (W x H x D)	28.61 x 16.63 x 2.64 in.	38.3 x 22.04 x 2.80 in.	43.42 x 24.98 x 2.82 in.	48.76 x 27.98 x 2.83 in.	57.38 x 32.83 x 3.8 in.	66.23 x 37.84 x 3.28 in.	75.89 x 43.27 x 3.28 in.	86.4 x 49.22 x 3.32 in.
Bezel Width (L/R, T/B)	0.49/0.49, 0.49/0.55 in.	0.49/0.49, 0.49/0.55 in.	0.49/0.49, 0.49/0.55 in.	0.49/0.49, 0.49/0.55 in.	0.51/0.51, 0.51/0.57 in.	0.58/0.56, 0.56/0.58 in.	0.58/0.56, 0.56/0.58 in.	0.63/0.63, 0.63/0.63 in.
Speakers	Integrated 5W x 2		Integrated 10W x 2					
Optional Stand	ST-32E2			ST-55E			ST-801	

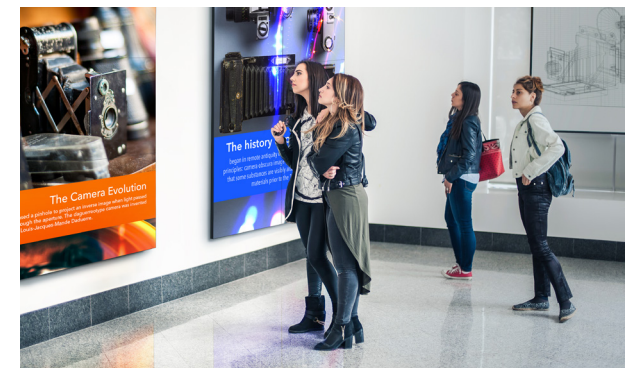
	P Series		
NEC Model Number	P435 / -IR / -MPi4e / -PC5 / -PT	P495 / -IR / -MPi4E / -PC5 / -PT	P555 / -IR / -MPi4e / -PC5 / -PT
MAP in USD	\$1,755 / \$3,409 / \$1,934 / \$2,493 / \$3,685	\$1,959 / \$3,739 / \$2,138 / \$2,697 / \$4,179	\$2,685 / \$4,179 / \$2,864 / \$3,243 / \$4,839
LCD Size	43"	49"	55"
Native Resolution	3840 x 2160		
Runtime	24/7		
Contrast Ratio (typical)	≥8,000:1 (Out of the box conditions, local dimming ON)		
Brightness	700 cd/m ²		
Refresh Rate	60 Hz		
Power Consumption (typical)	90W	105W	110W
Expansion Compatible	OPS* and Raspberry Pi Compute Module		
Dimensions (W x H x D)	38.1 x 22.1 x 2.6 in.	43.4 x 25.1 x 2.4 in.	48.8 x 28.1 x 2.4 in.
Bezel Width (L/R, T/B)	0.43/0.43 in., 0.43/0.61 in.	0.49/0.49 in., 0.47/0.61 in.	
Speakers	Optional available (SP-RM3)		
Optional Stand	ST-401		

	UN Series	
NEC Model Number	UN552 / UN552V	UN552S / UN552VS
MAP in USD	\$4,919 / \$4,559	\$5,725 / \$5,129
LCD Size	55"	
Native Resolution	1920 x 1080	
Runtime	24/7	
Contrast Ratio (typical)	1200:1 (without local dimming)	1100:1 (without local dimming)
Brightness	700 / 500 cd/m ²	
Refresh Rate	60Hz	
Power Consumption (typical)	110W / 150W	165W / 165W
Expansion Compatible	OPS and Raspberry Pi Compute Module	
Dimensions (W x H x D)	47.8 x 27 x 4.1 in.	47.7 x 26.8 x 3.9 in.
Bezel Width (L/R, T/B)	0.09/0.05, 0.09/0.05 in.	0.02/0.02 in., 0.02/0.02 in.
Speakers	No	
Optional Stand	ST-5220	

	Stretch Series
NEC Model Number	BT421
MAP in USD	\$2,945
LCD Size	42"
Native Resolution	1920 x 480
Contrast Ratio (typical)	4000:1
Brightness	700 cd/m ²
Refresh Rate	60Hz
Power Consumption (typical)	50W
Expansion Compatible	No
Dimensions (W x H x D)	41.7 x 11.4 x 2.6 in.
Bezel Width (L/R, T/B)	0.72/0.72, 0.72/0.72 in.
Speakers	NA
Optional Stand	N/A

*-AVT and -PCX models contain a module within the OPS Slot

**-MPi models contain the NEC Mediaplayer within the Raspberry Pi Compute Module slot



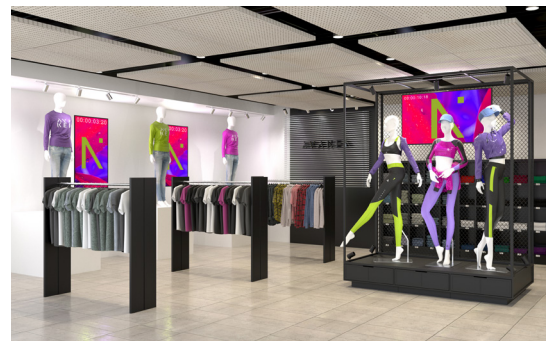
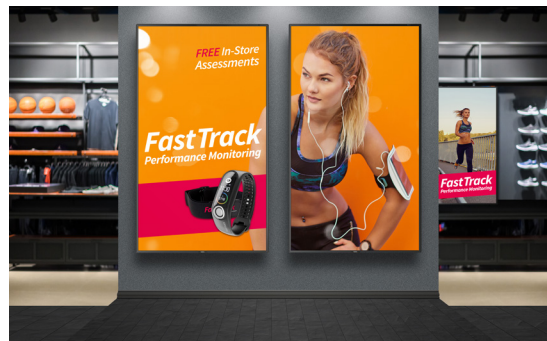
Large Screen Displays



Sharp ME Series				
Sharp Model Number	PN-ME432	PN-ME502	PN-ME552	PN-ME652
MAP in USD	\$758	\$913	\$969	\$1,332
LCD Size	43"	50"	55"	65"
Native Resolution	3840 x 2160			
Runtime	18/7			
Contrast Ratio (typical)	1200:1	4000:1	1200:1	1200:1
Brightness	400 cd/m ²		450 cd/m ²	
Refresh Rate	60Hz			
Power Consumption (typical)	90W	85W	120W	140W
Expansion Compatible	None, integrated SoC Design			
Dimensions (W x H x D)	38 x 21.8 x 2.4 in.	44 x 25.2 x 2.44 in.	48.5 x 27.7 x 2.44 in.	57.6 x 57.6 x 2.44 in.
Bezel Width (L/R, T/B)	9.9.9mm Even			15.9mm Even
Speakers	Integrated 10W x 2			
Optional Stand	ST-43M			ST-65M

MA Series			
NEC Model Number	MA431 / -IR / -MPi4e / -PC5 / -PT	MA491 / -IR / -MPi4e / -PC5 / -PT	MA551 / -IR / -MPi4e / -PC5 / -PT
MAP in USD	\$1,259 / \$3,149 / \$1,438 / \$1,997 / \$3,359	\$1,389 / \$3,483 / \$1,568 / \$2,209 / \$3,833	\$2,049 / \$3,779 / \$2,228 / \$2,787 / \$4,515
LCD Size	43"	49"	55"
Native Resolution	3840 x 2160, Wide Color Gamut		
Runtime	24/7		
Contrast Ratio (typical)	≥8,000:1 (Out of the box conditions, local dimming ON)		
Brightness	500 cd/m ²		
Refresh Rate	60Hz		
Power Consumption (typical)	70W	85W	90W
Expansion Compatible	Intel® Smart Display Module Small or Large, Raspberry Pi Compute Module 4, -AVT3, -PC5 and -MPi4E have SDM or Raspberry Pi Compute Module slots taken up by integrated solutions		
Dimensions (W x H x D)	38.1 x 22.1 x 2.6 in.	43.4 x 25.1 x 2.4 in.	48.8 x 28.1 x 2.4 in.
Bezel Width (L/R, T/B)	11.0/11.0, 11.0/15.6mm		
Speakers	Optional Available (SP-RM3)		
Optional Stand	ST-401, ST-43M		

M Series								
NEC Model Number	M321 / -PT / -IR	M431 / -AVT3 / -IR / -MPi4e / -PT	M491 / -AVT3 / -IR / -MPi4e / -PC5 / -PT	M551 / -AVT3 / -IR / -MPi4e / -PC5 / -PT	M651 / -AVT3 / -IR / -MPi4e / -PC5 / -PT	M751 / -AVT3	M861 / -AVT3	M981 / -AVT3
MAP in USD	\$755 / \$2,599 / \$2,450	\$1,049 / \$1,249 / \$2,799 / \$1,228 / \$3,045	\$1,259 / \$1,459 / \$3,149 / \$1,438 / \$1,997 / \$3,675	\$1,659 / \$1,859 / \$3,465 / \$1,838 / \$2,397 / \$4,199	\$2,399 / \$2,599 / \$4,409 / \$2,578 / \$3,137 / \$5,249	\$2,968 / \$3,418	\$3,900 / \$4,450	\$10,625 / \$10,875
LCD Size	32"	43"	49"	55"	65"	75"	86"	98"
Native Resolution	1920 x 1080	3840 x 2160						
Runtime	24/7							
Contrast Ratio (typical)	1100:1	≥8,000:1 (Out of the box conditions, local dimming ON)						
Brightness	450 cd/m ²	500 cd/m ²						
Refresh Rate	60Hz							
Power Consumption (typical)	40W	80W	95W	110W	120W	205W	320W	340W
Expansion Compatible	No	Intel® Smart Display Module Small or Large, Raspberry Pi Compute Module 4, -AVT3, -PC5 and -MPi4E have SDM or Raspberry Pi Compute Module slots taken up by integrated solutions						
Dimensions (W x H x D)	28.6 x 16.8 x 2.6 in.	38.1 x 22.1 x 2.6 in.	43.4 x 25.1 x 2.4 in.	48.8 x 28.1 x 2.4 in.	57.4 x 32.9 x 2.5 in.	66.2 x 37.8 x 3.3 in.	75.9 x 43.3 x 3.3 in.	86.4 x 49.2 x 3.3 in.
Bezel Width (L/R, T/B)	11.9/11.9, 11.9/17.2 mm	11.0/11.0, 11.0/15.6mm			12.5/12.5, 12.0/15.6mm		14.3/14.3/14.3/14.8mm	
Speakers	Integrated 5W x 2			Integrated 10W x 2				
Optional Stand	ST-32M	ST-401, ST-43M			ST-65M		ST-801	



*-AVT and -PCX models contain a module within the OPS Slot.
 **-MPi models contain the NEC Mediaplayer within the Raspberry Pi Compute Module slot

Minimum Advertised Price current as of 8/1/24. Pricing subject to change.

Visit www.sharpeddisplays.us for more information

Large Screen Displays



Open Pluggable Specification (OPS) PC Models		
NEC Model No.	OPS-TI7W-PS	OPS-TAA8R-PS
MAP in USD	\$1,999	\$1,149
Hard Drive	128GB M.2 SSD	64GB SSD
Operating System	Windows 10 Professional	Windows 10 IoT
CPU	Whiskeylake 8665U, 1.9 GHz Quad-Core	A8-5550M, 2.1GHz Quad-Core
GPU	Intel HD Graphics 620	Radeon HD8550
RAM	8GB DDR4	4GB DDR3
Network Connections	Gigabite Ethernet / WiFi	Gigabite Ethernet, 802.11 b/g/n Wifi
Control I/O	USB 3.0 x 2 / USB 2.0 x 2	USB 2.0 x 2, USB 3.0 x 2
Dimensions (W x H x D)	7.1 x 1.2 x 4.6 in.	

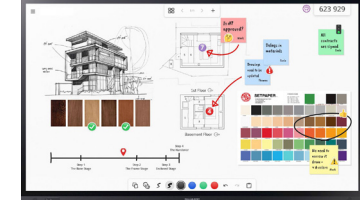
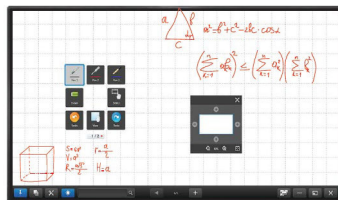
Smart Display Module (SDM) PC Models			
NEC Model No.	SDM-VICW-IS	SDM-VI3W-IS	SDM-VI5W-PS
MAP in USD	\$820	\$1,399	\$1,899
Hard Drive	64GB mSATA	128GB mSATA	256GB SSD
Operating System	Windows 10 IoT Enterprise		Windows 10 Pro
CPU	Intel® Celeron G4930E	Intel® i3-8100H processor	Intel® i5-8400H processor
GPU	Intel UHD Graphics 630		
RAM	8GB DDR3 RAM, dual channel		16GB DDR4 RAM
Network Connections	Gigabite Ethernet	Gigabite Ethernet, Bluetooth, WiFi	
Control I/O	USB 3.1 x 4, MiniDP front output		
Dimensions (W x H x D)	7.1 x 1.2 x 4.6 in.		

NEC Model No.	Edition Raspberry Pi Compute Module	MAP in USD
MPI4E	1.2GHz quad core ARM Cortex A53, Broadcom VideoCore IV, 1 GB LPDDR2-900 SDRAM, 32GB eMMC on board memory, Pre-loaded with NEC MediaPlayer and CMS NEC MediaPlayer installed on the NEC Edition Raspberry Pi Compute Module 4 System on a Chip, Broadcom BCM2711, Quad-core Cortex-A72 (ARM v8) 64-bit SoC @ 1.5GHz, 4 GB LPDDR4-3200 SDRAM, 32GB eMMC on board memory.	\$199

NEC Model No.	Other SDM Options	MAP in USD
SDM-12GSDI	SDM based 12G SDI Receiver	\$1,399
SDM-HDBT	SDM based HD BaseT Receiver Module	\$449
DS1-TM01	ATSC / NTSC Tuner Module	\$249
SDM-DOCK	External dock for SDM accessories	\$339
OPS-HDBT-BND	OPS HDBaseT receiver module and SB-12AM	\$699
OPS-SDI-BND	SDM based 12G SDI card and SB-12AM	\$1,599

NEC Model No.	Other OPS Options	MAP in USD
SB-01HC	OPS based HD-SDI Card	NO MAP
SB-04HC	OPS based 3G-SDI Card	NO MAP





LCD Interactive Touch Screen Display Systems

Sharp Model No.	4W-B55FT5U / 4W-B65FT5U / 4W-B75FT5U / 4W-B86FT5U	PN-LC652 / PN-LC752 / PN-LC862	PN-L652B / PN-L752B / PN-L862B	PN-LA652 / PN-LA752 / PN-LA862
Sharp Advantage	3,840 x 2,160 pixel resolution / Built-in Digital Tuner & Media Player / HDR10 & HTML5 Web Browser / Built-in Wireless Connectivity	65"/75"/86" Class Whiteboards / Built-in SoC Controller / Optional PN-ZCMS1 AV Soundbar / Built-in Wireless Connectivity	65"/75"/86" Class Whiteboards / Built-in SoC Controller / Optional PN-ZCMS1 AV Soundbar / Built-in Wireless Connectivity	65"/75"/86" Class Whiteboards / Optional PN-ZCMS1 AV Soundbar / Built-in Wireless Connectivity / Window 11 Pro SDM Controller
MAP in USD	\$1,269 / \$1,659 / \$2,599 / \$3,779	\$2,049 / \$3,299 / \$4,639	\$2,995 / \$3,995 / \$5,495	\$9,195 / \$10,595 / \$16,995
Screen Size	55" class (54.6" diagonal) 65" Class (64.5" diagonal) 75" Class (75.0" diagonal) 86" Class (85.6" diagonal)	65" class (64 - 1/2" diagonal) 75" class (74 - 1/2" diagonal) 86" class (85 9/16" diagonal)	65" class (64 - 1/2" diagonal) 75" class (74 - 1/2" diagonal) 86" class (85 9/16" diagonal)	65" class (64 - 1/2" diagonal) 75" class (74 - 1/2" diagonal) 86" class (85 9/16" diagonal)
UV ² A Panel	No	No	No	No
Backlight	LED direct lit	LED direct lit	LED direct lit	LED direct lit
Native Resolution	3840 x 2160	3840 x 2160	3840 x 2160	3840 x 2160
Contrast Ratio	1300:1 / 1300:1 / 1200:1 / 1200:1	1200:1 / 1200:1 / 1200:1	4000:1 / 5000:1 / 1200:1	1200:1 / 1200:1 / 1200:1
Brightness	270 cd/m ² / 300 cd/m ² / 350 cd/m ² / 350 cd/m ²	450 cd/m ² / 450 cd/m ² / 450 cd/m ²	400 cd/m ² / 400 cd/m ² / 400 cd/m ²	450 cd/m ² / 500 cd/m ² / 500 cd/m ²
Optional PC	Yes - PN-SPCi5W11A	Yes - PN-SPCi5W11A	Yes - PN-SPCi5W11A	Yes - PN-SPCi5W11A
Dimensions (W x D x H)	48.3" (W) x 2.9" (D) x 28" (H) 56.9" (W) x 2.9" (D) x 32.9" (H) 65.9" (W) x 3" (D) x 37.8" (H) 75.7" (W) x 4.01" (D) x 43.4" (H)	59 1/2" x 3-3/8" x 36-1/8" 67-13/16" x 3-7/16" x 40-5/8" 77-1/2" x 3-7/16" x 46-1/16"	58-19/32" (W) x 3-13/32" (D) x 35-5/16" (H) 67-5/16" (W) x 3-13/32" (D) x 40-3/32" (H) 77-3/32" (W) x 3-13/32" (D) x 45-19/32" (H)	55 3/16" x 3-9/16" x 35-1/4" 67-3/4" x 3-3/8" x 40-3/8" 77-3/8" x 3-3/8" x 45-13/16"
Weight	61.29 lbs. / 88.18 lbs. / 132.3 lbs. / 150.4lbs.	84.9 lbs. / 112.4 lbs. / 143.3 lbs.	84 lbs. / 109.1 lbs. / 142.1 lbs.	84.9 lbs. / 112.4 lbs. / 143.3 lbs.
Bezel Width	3 mm (L/R/T), 19 mm (B) 4 mm (L/R/T), 21 mm (B) 6 mm (L/R/T), 17 mm (B) 5.5 mm (L/R/T), 19 mm (B)	21.9 mm (L/R/T), 53.2 mm (B) 21.9 mm (L/R/T), 53.2 mm (B) 21.9 mm (L/R/T), 53.2mm (B)	29.9 mm (L/R) 31.9 mm (T), 60.8 mm (B) 29.4 mm (L/R) 29.5 mm (T), 61.7 mm (B) 30.8 mm (L/R) 30.6 (T), 62.7 mm (B)	4.8 mm (L/R/T), 32.3 mm (B) 4.8 mm (L/R/T), 32.3 mm (B) 4.8 mm (L/R/T), 32.3mm (B)
Built-in Speakers	Yes	Yes	Yes	Yes
Orientation	Landscape Only	Landscape Only	Landscape Only	Yes
Power Consumption	130W / 180W / 300W / 380W	180W / 200W / 260W	330W / 400W / 470W	190W / 205W / 275W
Limited Warranty	5-Year Limited	5-Year Limited	5-Year Limited	5-Year Limited
Commercial Usage	16/7 Certified	16/7 Certified	16/7 Certified	24/7 Certified

Large Screen Displays



	4K Ultra HD Commercial LCD Displays		4K Ultra-HD Premium Level Professional Displays	
Sharp Model Number	4P-B50EJ2U / 4P-B55EJ2U / 4P-B65EJ2U / 4P-B75EJ2U	4P-B43EJ2U / 4P-B86EJ2U	PN-HS501	PN-HS551
Sharp Advantage	3,840 x 2,160 pixel resolution, Built-in Digital Tuner & Media Player, HDR10 & HTML5 Web Browser		Flexible Mounting Configuration / Thin Profile/LEED compliant / High Brightness / Built-in Media Player	
MAP in USD	\$590 / \$635 / \$850 / \$1,290	\$475 / \$2,365	N/A	N/A
Screen Size	50" class (49.5" diagonal) 55" class (54.6" diagonal) 65" Class (64.5" diagonal) 75" Class (75.0" diagonal)	43" Class (42.5" diagonal) 86" Class (85.6" diagonal)	50" class (49 1/2" diagonal)	55" class (54 5/8" diagonal)
UV ² A Panel	No	No	No	No
Backlight	LED direct lit	LED direct lit	LED direct lit	LED direct lit
Native Resolution	3840 x 2160	3840 x 2160	3840 x 2160	3840 x 2160
Contrast Ratio	5000:1 / 1300:1 / 1300:1 / 1200:1	1000:1 / 1200:1	4000:1	5000:1
Brightness	300 cd/m ² / 300 cd/m ² / 330 cd/m ² / 380 cd/m ²	300 cd/m ² / 380 cd/m ²	700 cd/m ²	700 cd/m ²
Optional PC	Yes - PN-SPCi5W11A	Yes - PN-SPCi5W11A	Yes - PN-SPCi5W10C8GB	Yes - PN-SPCi5W10C8GB
Dimensions (W x D x H)	43.8" x 2.8" x 25.3" 48.3" x 2.9" x 28" 56.9" x 2.9" x 32.9" 65.9" x 3" x 37.8"	37.7" x 2.83" x 22" 75.7" x 4.1" x 43.4"	44 7/16" x 2-1/2" x 25-9/16"	48 7/8" x 2-1/2" x 28-1/16"
Weight	21.7 / 28.3 lbs. / 36.2 lbs. / 62.2 lbs	14.6 / 93.7 lbs	33.1 lbs.	39.7 lbs.
Bezel Frame Width	4 mm (L/R/T), 16 mm (B) 3 mm (L/R/T), 19 mm (B) 4 mm (L/R/T), 21 mm (B) 6 mm (L/R/T), 17 mm (B)	3 mm (L/R/T), 17 mm (B) 5.5 mm (L/R/T), 19 mm (B)	14.29mm	14.29mm
Built-in Speakers	Yes	Yes	Yes	Yes
Portrait and Landscape	Yes	Yes	Yes	Yes
Power Consumption	130W / 130W / 180W / 300W	TBA/ TBA	150 W	190 W
Limited Warranty	3-Year Limited	3-Year Limited	3-Year Limited	3-Year Limited
Commercial Usage	16/7 Certified	16/7 Certified	24/7 Certified	24/7 Certified