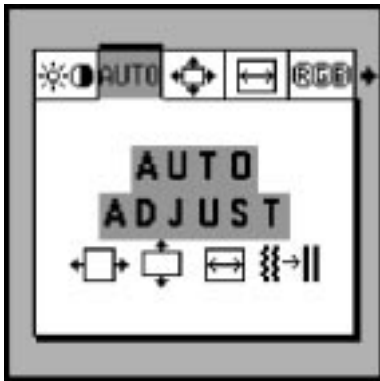


NEC Technologies, Inc. MultiSync® LCD1510+™ Setup instructions for Windows® 95/98 & NT Computers

*For Optimal Performance
the MultiSync LCD1510+ should be set up for
1024x768 @ 75Hz.*

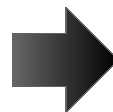
Once you have booted up your computer and have entered Windows, please follow the instructions below to fully optimize your MultiSync LCD monitor.

Step 1 Auto Adjust your MultiSync LCD monitor.



- Display a white background with a bright image at full page setting on the monitor, using such applications as Microsoft® Word, Excel or Paintbrush.
- To begin the setup/adjustment of the NEC MultiSync LCD1510+ monitor, push the **Proceed** button on the front bezel of the monitor to bring up the NEC **On Screen Manager**.
- Press the right arrow to highlight the **"AUTO"** tab and to select the **"AUTO ADJUST"** menu in green.
- Press the **"PROCEED"** button to initiate the **Auto Adjust** Function (This function will take a few seconds to be completed).
- Press **EXIT** to close the OSM™ menu.

(Proceed to Step 2.)
see reverse side



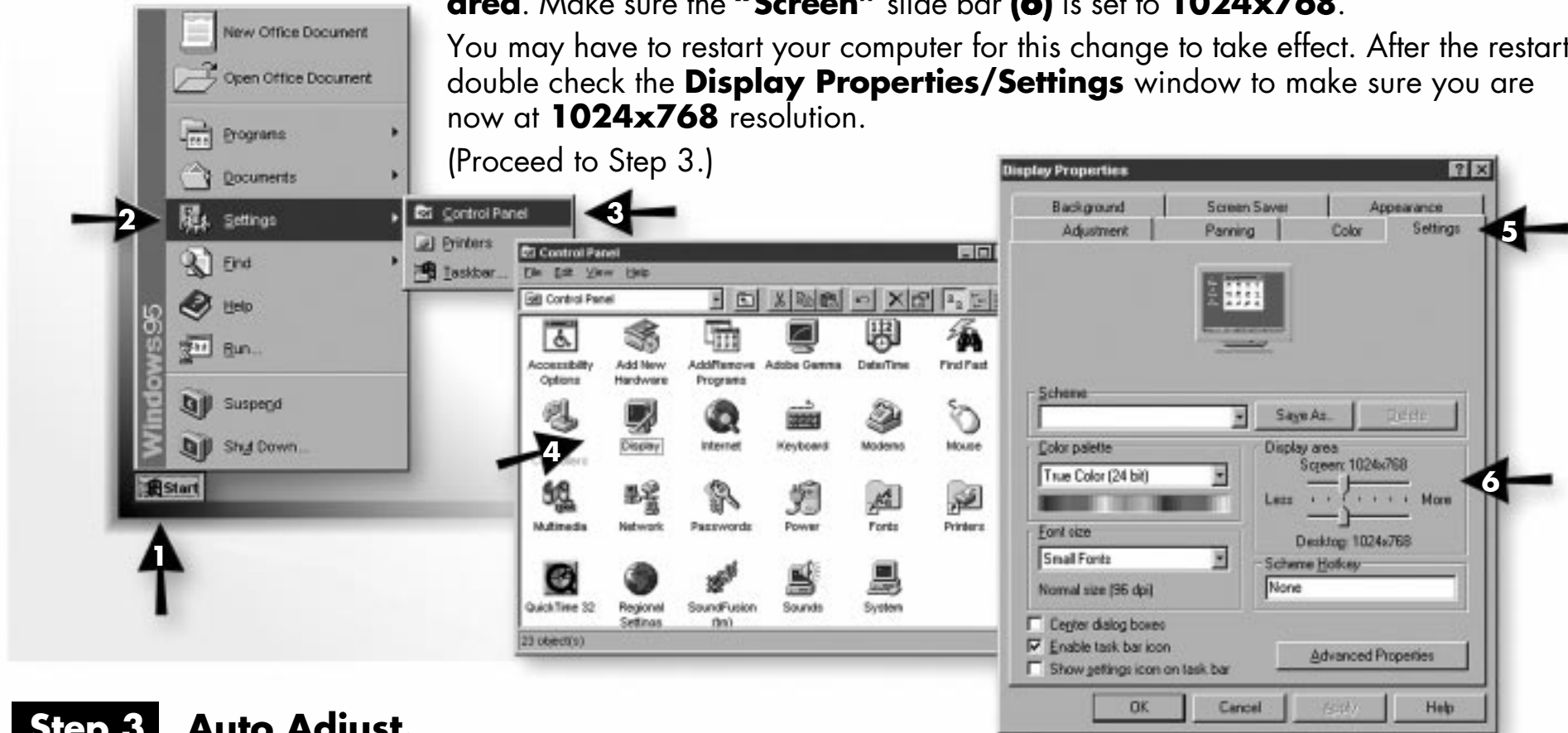
Step 2 Make sure that your computer is set up for 1024x768 resolution.

Open the Display Properties window by following this mouse click sequence **(1, 2, 3, 4, & 5)** indicated by the numbered arrows below.

On the right side of the Display Properties window, there is a box labeled **Display area**. Make sure the **"Screen"** slide bar **(6)** is set to **1024x768**.

You may have to restart your computer for this change to take effect. After the restart, double check the **Display Properties/Settings** window to make sure you are now at **1024x768** resolution.

(Proceed to Step 3.)



Step 3 Auto Adjust.

As soon as your computer is set to **1024x768** resolution, the monitor automatically activates the Auto Adjust Function. This function is activated only when the new video signal is received for the first time. If the image quality after the Auto Adjust is activated is not sufficient, please repeat Step 1.

If you have questions regarding the setup of your MultiSync LCD monitor, please refer to the user's manual or contact the NEC Technical Support Center at 1-800-632-4662.