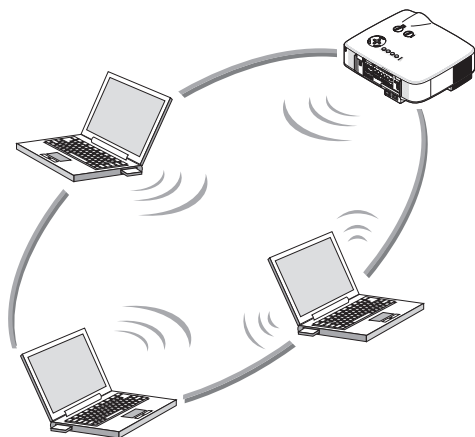


## NEC Projector

# NP3250/NP2250/ NP1250/NP3250W

## Wired and Wireless Network Setup Guide



1. What You Can Do with User Supportware 6 —● 1
2. Operating Environment —● 2
3. Connecting the LAN Cable —● 3
4. Configuring the LAN Settings of the Projector —● 4
5. Configuring the LAN Settings of the PC ([Example] Wireless LAN in Windows Vista: Ad Hoc connection) —● 5
6. Configuring the LAN Settings of the PC ([Example] Wireless LAN in Windows XP: Ad Hoc connection) —● 6
7. Viewing the "User's Guide" and Help —● 7

### Information on USB Wireless LAN:

In some areas and countries, the projector models described in this manual are distributed without a USB Wireless LAN unit as standard.

If you purchase the projector without the USB Wireless LAN Unit installed and need to connect to the projector via a wireless connection, the optional USB Wireless LAN Unit must be installed.



### Install in the PC the software stored in the User Supportware 6 CD-ROM.

This manual describes the LAN settings to use the software programs included in the supplied User Supportware 6 CD-ROM. For how to operate each software program, refer to "User's Guide" (PDF) on User Supportware 6 CD-ROM.

# Introduction

Thank you for purchasing an NEC projector.

The projector is equipped with the following features that enable you to give effective presentations.

- LAN port (RJ-45), USB Wireless LAN Unit, USB port (type A), supplied as standard
- Windows Vista standard functions Network Projector and Remote Desktop can be used.
- Viewer that displays images from a USB memory device<sup>\*1</sup>

<sup>\*1</sup> The projector is not supplied with a USB memory device.

The projector is also supplied with User Supportware 6 CD-ROM in which five programs of software are stored for effective use of these features. The software stored on this CD-ROM are as follows.

**Each program runs on Windows Vista, Windows XP or Windows 2000.**

**Install the software from the User Supportware 6 CD-ROM onto a PC before using.**

- Image Express Utility 2.0
- Desktop Control Utility 1.0
- ArcSoft MediaImpression
- Viewer PPT Converter 3.0
- PC Control Utility 3.0

This document explains how to configure the LAN settings to use the above software programs. For details of operations, refer to "User Supportware 6 User's Guide" on User Supportware 6 CD-ROM and help function of the software.

When selecting WPA-PSK/WPA-EAP/WPA2-PSK/WPA2-EAP for wireless LAN security type, refer to "WPA Setting Guide" on the User's Manual CD-ROM.

For the network settings on the personal computer, refer to the User's Manual for the personal computer or the peripheral equipment for the network.

Use a wireless LAN card conforming to the Wi-Fi standard for your personal computer.

The projector shown in the illustrations in this manual is the NP3250.

## NOTES

- (1) The contents of this guide may not be reprinted in part or whole without permission.
- (2) The contents of this guide are subject to change without notice.
- (3) Great care has been taken in the preparation of this guide; however, should you notice any questionable points, errors or omissions, please contact us.
- (4) Notwithstanding article (3), NEC will not be responsible for any claims on loss of profit or other matters deemed to result from using the Projector.

## Important Information

### USB Wireless LAN Unit FCC Compliance

This device complies with Part 15 of the FCC Rules. Operation is subject to the following two conditions: (1) this device may not cause harmful interference and (2) this device must accept any interference received, including interference that may cause undesired operation.

This equipment has been tested and found to comply with the limits for a Class B Personal Computer and Peripheral, pursuant to Part 15 of the FCC Rules. These limits are designed to provide reasonable protection against harmful interference in a residential installation.

This equipment generates, uses and can radiate radio frequency energy and, if not installed and used in accordance with the instructions, may cause harmful interference to radio communications.

However, there is no guarantee that interference will not occur in a particular installation. If this equipment does cause harmful interference to radio or television reception, which can be determined by turning the equipment off and on, the user is encouraged to try to correct the interference by one or more of the following measures:

- Reorient or relocate the receiving antenna.
- Increase the separation between the equipment and receiver.
- Connect the equipment into an outlet on a circuit different from that to which the receiver is connected.
- Consult the dealer or an experienced radio/TV technician for help.

This equipment has been tested to comply with the limits for a Class B personal computer and peripheral, pursuant to Subpart B of Part 15 of FCC Rules. Only peripherals (computer input/output devices, terminals, printers, etc.) certified (DoC) or verified to comply with Class B limits may be attached to this equipment. Operation with noncertified (DoC) or non-verified personal computer and/or peripherals is likely to result in Interference to radio and TV reception.

The connection of a unshielded equipment interface cable to this equipment will invalidate the FCC Certification of this device and may cause interference levels which Exceed the limits established by FCC for equipment.

You are cautioned that changes or modifications not expressly approved by the party responsible for compliance could void your authority to operate the equipment.

### Regulatory Information/Disclaimers

Installation and use of this Wireless LAN device must be in strict accordance with the instructions included in the user documentation provided with the product. Any changes or modifications (including the antennas) made to this device that are not expressly approved by the manufacturer may void the user's authority to operate the equipment. The manufacturer is not responsible for any radio or television interference caused by unauthorized modification of this device, or the substitution of the connecting cables and equipment other than manufacturer specified. It is the responsibility of the user to correct any interference caused by such unauthorized modification, substitution or attachment. Manufacturer and its authorized resellers or distributors will assume no liability for any damage or violation of government regulations arising from failing to comply with these guidelines.

### **Caution**

To comply with FCC RF exposure compliance requirements, the antenna used for this transmitter must be installed to provide a separation distance of at least 7.87"/20cm from all persons and must not be co-located or operating in conjunction with any other antenna or transmitter.

SAR compliance has been established in typical laptop computer(s) with USB slot, and product could be used in typical laptop computer with USB slot. Other application like handheld PC or similar device has not been verified and may not compliance with related RF exposure rule and such use shall be prohibited.

### **Usage restrictions in North America**

The following channels can be used indoors only.

- In the United States and Canada: 36, 40, 44, and 48 channels
- In Mexico: 149, 153, 157, 161, and 165 channels

The other channels can be used both indoors and outdoors.

This Class B digital apparatus complies with Canadian RSS-210.

Cet appareil numérique de la Classe B est conforme à la norme CNR-210 du Canada.

To comply with Canada RSS-210 (Issue 7) section A9.4 (b) (ii); this radio product will not transmit on any channels operating in the exclusion band of 5600 - 5650MHz. All channels in the 5600 ~ 5650MHz band are disabled by factory firmware and are not user changeable.

### **Regulatory Statement:**

Operation of this device is subjected to the following National regulations and may be prohibited to use if certain restriction should be applied.

#### **France:**

Outdoor use limited to 10mW e.i.r.p. within the band 2454 – 2483.5 MHz. Derogation in French overseas departments of Guyane and La Reunion: outdoor use not allowed in band 2400 - 2420 MHz.

Hereby, NEC Display Solutions, Ltd. declares that this USB Wireless LAN Unit (Model: NP01LM) is in compliance with the essential requirements and other relevant provisions of Directive 1999/5/EC.

### **Cautions on security when using wireless LAN products**

With a wireless LAN, radio waves are used instead of LAN cables for the exchange of data between the wireless access points (computers, etc.), offering the advantage that LAN connections can be made freely within the range of the radio waves.

On the other hand, the radio waves reach all points within this range, regardless of walls or other obstacles, possibly resulting in the problems described below if the proper security measures are not taken.

#### **• Contents of transmissions may be intercepted**

Malicious third parties may purposely intercept the radio waves and steal information contained in the transmissions, including such personal information as ID numbers, passwords, credit card numbers, e-mail messages, etc.

- **Improper intrusions**

Malicious third parties may without permission access the personal or company network and steal personal or confidential information, pretend to be someone else and leak incorrect information, rewrite information that has been intercepted, introduce computer viruses or otherwise damage data or the system, etc.

Wireless LAN cards and wireless access points generally include security measures for dealing with these problems. Making the proper security settings before using the products can reduce the risk of such problems arising.

We recommend that you fully understand the problems that can arise when using the products without making the security settings, then that you make the security settings based on your own decision and at your own discretion.

## Cautions on Usage

### **Warning**

- The USB Wireless LAN Unit is not meant for use with facilities or equipment involving the safeguard of human life, such as medical equipment, nuclear facilities or equipment, aeronautical or space equipment, transportation facilities or equipment, etc., or with facilities or equipment requiring high levels of reliability. Do not use the USB Wireless LAN Unit in such cases.
- Do not use the USB Wireless LAN Unit near cardiac pacemakers.
- Do not use the USB Wireless LAN Unit near medical equipment. Doing so may cause electromagnetic interference with the medical equipment, possibly leading to death.
- Do not disassemble or modify the USB Wireless LAN Unit in any way. Doing so could lead to fire or electric shock.
- Do not use the USB Wireless LAN Unit in wet or moist places, such as in bathrooms or near humidifiers. Doing so could lead to fire, electric shock or malfunction.

### **Caution**

To prevent damage due to static electricity, eliminate any static electricity from your body before touching the USB Wireless LAN Unit.

- Static electricity from the human body may damage the USB Wireless LAN Unit. Before touching the USB Wireless LAN Unit, touch an aluminum sash, a door knob, or some other metal object around you to eliminate the static electricity.

### **Caution**

The radio waves used by the USB Wireless LAN Unit pass through the wood or glass used in normal homes (but not through window panes with built-in metallic mesh).

The radio waves do not pass through iron reinforcing bars, metal or concrete, however, so the USB Wireless LAN Unit cannot be used for communicating through walls or floors made with these materials.

Specifications

For United States, Canada, and Mexico

Product Name	NP01LM3	
Operating Voltage	5V (power supplied from the projector)	
Max Amps	Tx: 472 mA (Max) Rx: 300 mA (Max)	
Wireless Standard	IEEE802.11a, IEEE802.11b, IEEE802.11g	
Modulation Method	CCK/DQPSK/DBPSK/OFDM	
LED Display (Blue)	During communication: blinking Standby: slow blinking No operation: light off	
IEEE802.11a	Center Frequency Range/Operating channels	5150 to 5350, 5725 to 5850 MHz 36,40,44,48,52,56,60,64,149,153,157,161,165 channels
	Transmission method	OFDM method (Orthogonal Frequency Division Multiplexing method)
	Data Rates	54/48/36/24/18/12/9/6 (Mbps)
IEEE802.11b	Center Frequency Range/Operating channels	2412 to 2462 MHz 1 to 11 channels
	Transmission method	DS-SS method (direct dispersion spectrum dispersion method)
	Data Rates	11/5.5/2/1 (Mbps)
IEEE802.11g	Center Frequency Range/Operating channels	2412 to 2462 MHz 1 to 11 channels
	Transmission method	OFDM method (Orthogonal Frequency Division Multiplexing method)
	Data Rates	54/48/36/24/18/12/9/6 (Mbps)
Interface	USB 2.0 (connected to USB wireless LAN port on the projector)	
Dimensions	Width:1.1"/28 mm Height:0.43"/11 mm Length:3.03"/77 mm	
Weight	0.042 lbs/19 g	
Environmental Considerations	Operational Temperatures : 41° to 104°F / 5° to 40°C, 20% to 80% humidity (non-condensing) Storage Temperatures : 14° to 122°F (-10° to 50°C), 20% to 80% humidity (non-condensing)	

A wireless LAN can be used in the following countries and areas.

Using a wireless LAN in a country or area other than the following may infringe the radio wave laws of the country where it is used.

Austria / Belgium / Bulgaria / Cyprus / Czech / Denmark / Estonia / Finland / France / Germany / Greece / Hungary / Iceland / Ireland / Italy / Latvia / Liechtenstein / Lithuania / Luxembourg / Malta / Norway / Poland / Portugal / Romania / Slovak / Slovenia / Spain / Sweden / Switzerland / The Netherlands / United Kingdom

Product Name	NP01LM2	
Operating Voltage	5V (power supplied from the projector)	
Max Amps	Tx: 472 mA (Max) Rx: 300 mA (Max)	
Wireless Standard	IEEE802.11a, IEEE802.11b, IEEE802.11g	
Modulation Method	CCK/DQPSK/DBPSK/OFDM	
LED Display (Blue)	During communication: blinking Standby: slow blinking No operation: light off	
IEEE802.11a	Center Frequency Range/Operating channels	5150 to 5250, 5250 to 5350, 5470 to 5725 MHz 36, 40, 44, 48, 52, 56, 60, 64, 100, 104, 108, 112, 116, 120, 124, 128, 132, 136, 140 channels
	Transmission method	OFDM method (Orthogonal Frequency Division Multiplexing method)
	Data Rates	54/48/36/24/18/12/9/6 (Mbps)
IEEE802.11b	Center Frequency Range/Operating channels	2412 to 2472 MHz 1 to 13 channels
	Transmission method	DS-SS method (direct dispersion spectrum dispersion method)
	Data Rates	11/5.5/2/1 (Mbps)
IEEE802.11g	Center Frequency Range/Operating channels	2412 to 2472 MHz 1 to 13 channels
	Transmission method	OFDM method (Orthogonal Frequency Division Multiplexing method)
	Data Rates	54/48/36/24/18/12/9/6 (Mbps)
Interface	USB 2.0 (connected to USB wireless LAN port on the projector)	
Dimensions	Width:1.1"/28 mm Height:0.43"/11 mm Length:3.03"/77 mm	
Weight	0.042 lbs/19 g	
Environmental Considerations	Operational Temperatures : 41° to 104°F / 5° to 40°C, 20% to 80% humidity (non-condensing) Storage Temperatures : 14° to 122°F (-10° to 50°C), 20% to 80% humidity (non-condensing)	

Contents

**Introduction..... Inside cover**

**Important Information .....3**

**Specifications .....6**

**Contents .....8**

**1. What You Can Do with User Supportware 6.....9**

1-1. Image Express Utility 2.0.....9

1-2. Desktop Control Utility 1.0 .....11

1-3. ArcSoft MediaImpression.....12

1-4. Viewer PPT Converter 3.0 .....13

1-5. PC Control Utility 3.0 .....13

**2. Operating Environment..... 14**

2-1. Supported Projectors.....14

2-2. Supported wireless LAN security functions .....14

2-3. Operating Environment.....15

**3. Connecting the LAN Cable ..... 16**

**4. Configuring the LAN Settings of the Projector..... 17**

4-1. Displaying On-Screen Menu (NETWORK SETTINGS) .....17

4-2. Wireless LAN .....19

4-3. Wired LAN .....28

**5. Configuring the LAN Settings of the PC**

**([Example] Wireless LAN in Windows Vista: Ad Hoc connection) ..... 30**

**6. Configuring the LAN Settings of the PC**

**([Example] Wireless LAN in Windows XP: Ad Hoc connection)..... 34**

**7. Viewing the “User’s Guide” and Help.....39**

7-1. Displaying “User’s Guide” (PDF) .....39

7-2. Using Help .....41



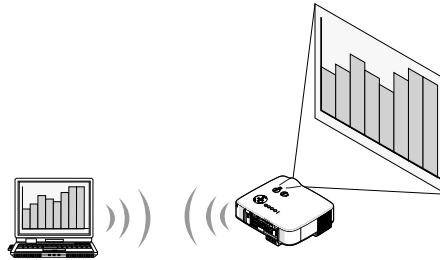
# 1. What You Can Do with User Supportware 6

## 1-1. Image Express Utility 2.0

Image Express Utility 2.0 is a software tool used to send the screen of your personal computer to the projector via a network without cables.

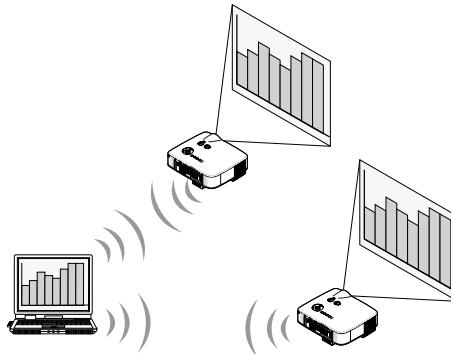
### ● High-speed, high-quality image transmissions based on NEC's original compression algorithm

NEC's original compression algorithm allows high-quality images to be sent over the network at high speed, from your personal computer to the projector.



### ● Simultaneous projection by multiple projectors

Images can be sent from a personal computer to not only one projector but also to two or more projectors at the same time.



### ● “Easy Connection” function for connecting wireless LAN

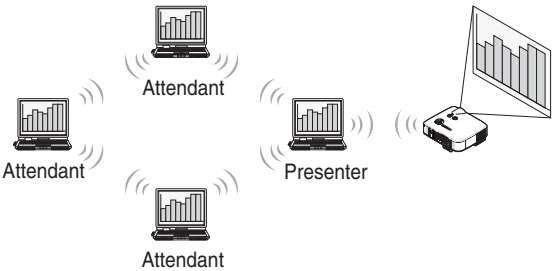
By using “Easy Connection” function<sup>\*1</sup>, the complicated setting of wireless LAN can be simplified.

<sup>\*1</sup> This function can be used when Windows XP is used as the OS and when you have a “Computer Administrator” privilege. If the OS is Windows Vista, input of logon password as “Administrator” may be prompted.

The “Easy Connection” function cannot be used with Windows 2000.

● **Projected images can be transferred and saved to personal computers.**

When “Meeting Mode” is used, projected images can be sent to the personal computers of all the participants (attendants) of a “Meeting”. The received images can be saved to your personal computer with a memo (text data) attached.

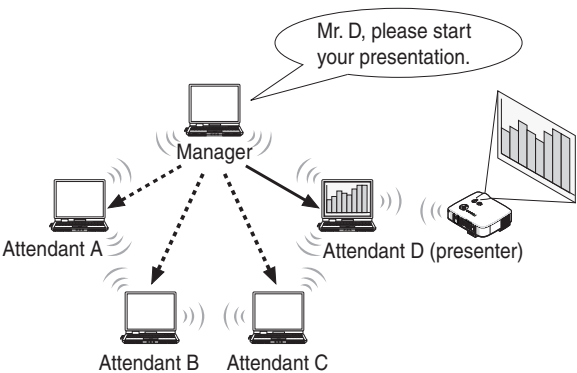


● **1-click switching of presenter**

When switching to another presenter during the conference, the participants (attendants) can simply click a button to switch over to the new presenter.

● **Central management of the projecting personal computer**

Using the Training Mode allows you to use a single personal computer (Manager) to manage which personal computer (Attendant) projects. Possible operation includes switching projecting personal computers to project from, as well as temporarily terminating communication with the projector.



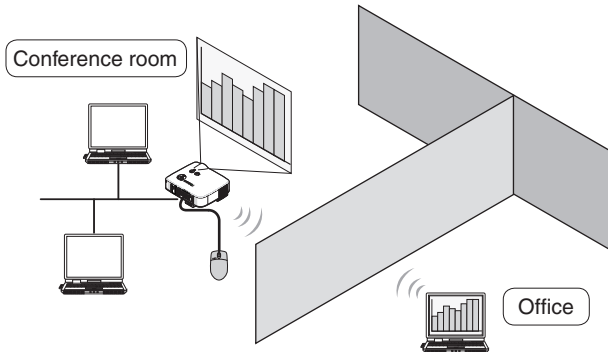
**Note**

The Training Mode is not installed via the “Typical” installation option when Image Express Utility 2.0 is installed.  
To use Training Mode, select “Extension” installation option on the install selection screen that is displayed while Image Express Utility 2.0 installation is in progress, and select “Training (Attendant)” or “Training (Manager)”.

## 1-2. Desktop Control Utility 1.0

Desktop Control Utility 1.0 is software that operates the desktop screen of a personal computer at a remote location from the projector by using a network.

- A commercially available USB mouse is connected to the projector to operate the personal computer.
- Suppose, for example, a PowerPoint file to be presented in a conference is saved to a personal computer in your office. If this personal computer is connected to the projector in the conference room with LAN when the conference is held, the desktop screen of the personal computer in your office (Windows Vista/Windows XP/Windows 2000) can be projected and the PowerPoint file can be presented by operating the projector. In other words the personal computer does not need to be brought into the conference room.



### Important

- You can use the Desktop Control Utility 1.0 to operate a personal computer located in a separate room from the projector over a network. Therefore, care must be exercised to prevent any third party from viewing the screen of your personal computer (important documents), copying files, or turning off the power. NEC assumes no liability for any loss or damages arising from information leaks or system failures while you are using Desktop Control Utility 1.0.
- In the Windows operating system, select [Control Panel] → [Hardware and Sound] → [Power Options]. Set [Change when the computer sleeps] to [Never] (in the case of Windows Vista). This will disconnect the LAN connection when the personal computer enters standby mode while the Desktop Control Utility 1.0 is being used.
- The screen saver function is turned off while Desktop Control Utility 1.0 is running.

### 1-3. ArcSoft MediaImpression

ArcSoft MediaImpression is a multimedia image file management tool developed by ArcSoft, Inc. This tool has functions to capture images from a digital camera or scanner and to process or edit images, as well as image file management functions. In addition, slideshows and screen savers can also be easily created.

- ArcSoft MediaImpression in the User Supportware 6 CD-ROM has functions that allow you to use the projector more conveniently, in addition to the functions that come with the software, for when an NEC projector is connected.

Additional functions are listed below.

For details of each function, refer to the help function of ArcSoft MediaImpression.

- **Send Image**  
Sends images to the projector.
  - **Converting PowerPoint file**  
Converts a PowerPoint file into an image file.
  - **Send Logo**  
Registers an image file as the logo data of the projector.
  - **Capture**  
Saves the screens of the personal computer as image files.
  - **Start Slide Show**  
Sends the image of a slideshow to the projector and executes the slideshow on the projector.
  - **Viewer Output**  
Converts a slideshow into an index file that can be played back by the viewer function of the projector and outputs the index file.
  - **Connection Selection**  
Select the projector to connect.
- The personal computer and projector may be connected with wired LAN or wireless LAN.

## 1-4. Viewer PPT Converter 3.0

Viewer PPT Converter 3.0 is software that converts files created with PowerPoint 95/97/2000/2002/2003/2007 into an index file that can be displayed with the viewer function of the projector.

- When converting, specify a USB memory device as the destination to which the index file is to be saved. Then you can easily make your presentation by simply inserting the USB memory device into the projector (viewer function of the projector).
- If PowerPoint 2000/2002/2003/2007 is installed in your personal computer, you can activate Viewer PPT Converter 3.0 from PowerPoint (PPT Converter add-in is automatically registered to PowerPoint).

## 1-5. PC Control Utility 3.0

PC Control Utility 3.0 is software that allows you to operate the projector from the personal computer when the personal computer and the projector are connected with LAN (wired or wireless) or a serial cable.

- You can operate the projector as follows from your personal computer.  
For details of each function, refer to the help function of PC Control Utility 3.0.
  - Power on/off
  - Input signal switching
  - Muting (temporarily disabling audio/video)
  - Freezing (locking the projected image)
  - Logo image transmission

2. Operating Environment

2-1. Supported Projectors

User Supportware 6 supports the following NEC projectors (as of April 2009)

NP Series	NP3250/NP2250/NP1250/NP3250W
-----------	------------------------------

Reference

Some of the software can be used with projectors other than the above projectors. For details, refer to the help function of each software.

2-2. Supported wireless LAN security functions

The projector supports the wireless LAN security called WPA-PSK, WPA-EAP, WPA2-PSK, and WPA2-EAP (encryption type:TKIP/AES) as well as WEP. WPA-PSK, WPA-EAP, WPA2-PSK, and WPA2-EAP (TKIP/AES) provide stronger security than WEP. For details on settings for “WPA-PSK/WPA-EAP/WPA2-PSK/WPA2-EAP”, refer to “WPA Setting Guide” on the User’s Manual CD-ROM.

- The projector’s WPA-PSK, WPA-EAP, WPA2-PSK, or WPA2-EAP supports the TKIP or AES encryption type.
- WPA-PSK, WPA-EAP, WPA2-PSK, or WPA2-EAP is available only when “INFRASTRUCTURE” is selected in “NETWORK TYPE” of the “CONNECTION” page.

## 2-3. Operating Environment

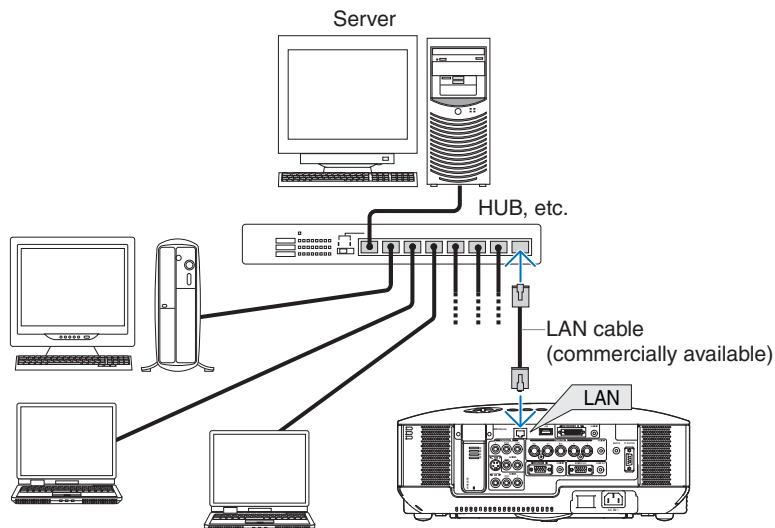
The following is the operating environment for Image Express Utility 2.0. For the operating environment of other software, please refer to the help function of each software.

Supported OS	Windows Vista (32-bit version) Home Basic Windows Vista (32-bit version) Home Premium Windows Vista (32-bit version) Business Windows Vista (32-bit version) Ultimate Windows Vista (32-bit version) Enterprise Windows XP Home Edition Service Pack 2 or later Windows XP Professional Service Pack 2 or later Windows XP Tablet PC Edition (Windows XP Tablet PC Edition Service Pack 2 or later) Windows 2000 Professional Service Pack 4 or later <ul style="list-style-type: none"> <li>• Windows power-saving function is not supported.</li> <li>• The “Easy Connection” supports the “Administrator” privilege of Windows Vista or the “Computer Administrator” privilege of Windows XP.</li> </ul>
Supported hardware	IBM PC/AT compatible personal computers CD-ROM drive required for installation
CPU	<ul style="list-style-type: none"> <li>• Windows Vista              Pentium 4/Pentium M of 800 MHz or higher required              Dual core CPU of at least 1 GHz is recommended</li> <li>• Windows XP/2000              Sender personal computer              Pentium MMX processor or higher required              Pentium 800 MHz or higher recommended              Recipient personal computer              Pentium III 800 MHz or higher required              Pentium 4 1.6 GHz or higher recommended</li> </ul>
Memory	<ul style="list-style-type: none"> <li>• Windows Vista              512 MB or more required (1 GB or more recommended).</li> <li>• Windows XP              128 MB or more required (192 MB or more recommended)</li> <li>• Windows 2000              64 MB or more required (128 MB or more recommended)</li> </ul> <p>More memory may be necessary if other applications run at the same time.</p>
Graphic processor (Windows Vista)	The “Graphics” score of “Windows Experience Index” recommends 3.0 or more.
Network environment	TCP/IP-compatible wired LAN or wireless LAN environment required
Resolution	1024 dots x 768 lines recommended 1024 dots x 768 lines - 1280 dots x 800 lines recommended (NP3250W)
Screen Colors	High Color (15 bits, 16 bits) True Color (24 bits, 32 bits) <ul style="list-style-type: none"> <li>• 256 or fewer colors are not supported.</li> </ul>

## 3. Connecting the LAN Cable

Connect a LAN cable to the LAN port (RJ-45) of the projector when connecting the projector to wired LAN.

After connecting the LAN cable to the projector, set the required settings for the projector (▶ next page).





## 4. Configuring the LAN Settings of the Projector

### Reference

For details on how to turn on/off the power to the projector and how to operate the buttons and remote control of the projector, refer to “User’s Manual” included in the User’s Manual CD-ROM.

### 4-1. Displaying On-Screen Menu (NETWORK SETTINGS)

#### Preparation:

Turn on the power to the projector and project images to the screen.  
It is not necessary to select the signals.

#### 1 Press the **(MENU)** button.

The on-screen menu is displayed.



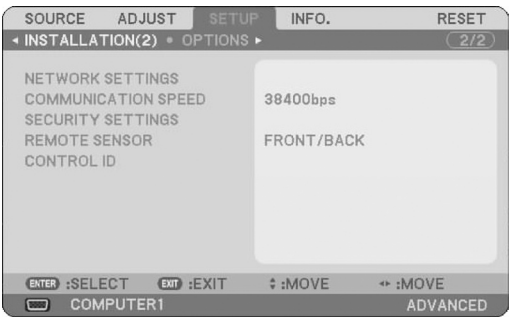
#### 2 Use the **(SELECT ►)** button to select the Setup submenu.

#### 3 Press the **(ENTER)** button.

The “BASIC” tab is highlighted.

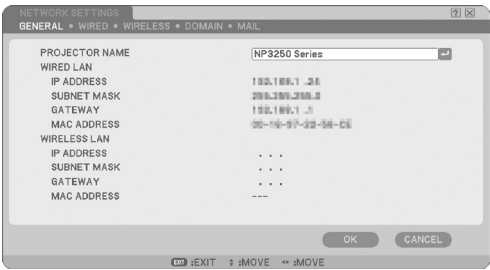
#### 4. Configuring the LAN Settings of the Projector

**4** Press the **(SELECT ▶)** button to highlight the “INSTALLATION (2)” tab.



**5** Press the **(SELECT ▼)** button to highlight “NETWORK SETTINGS”, and press the **(ENTER)** button.

The “NETWORK SETTINGS” screen is displayed.



- To make setting of wireless LAN  
Proceed to “4-2. Wireless LAN” (▶ next page).
- To make setting of wired LAN  
Proceed to “4-3. Wired LAN” (▶ page 28).

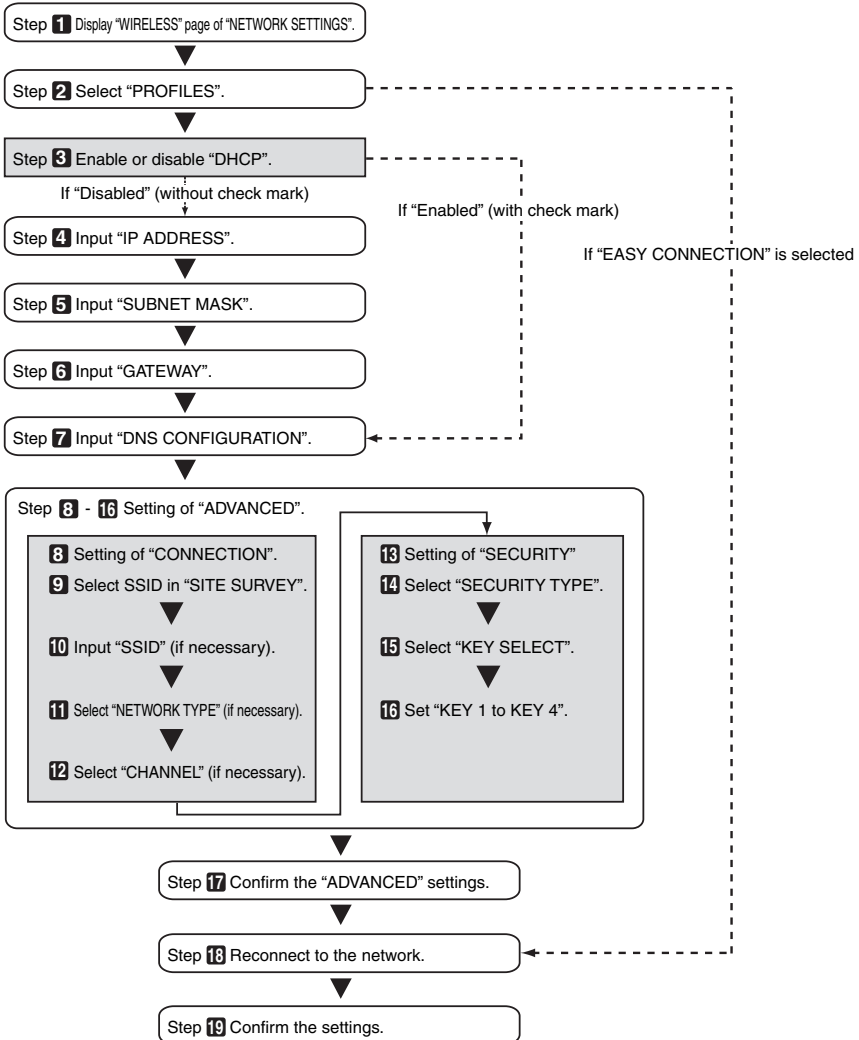
## 4-2. Wireless LAN

When connecting the wireless LAN, configure the LAN settings in the “WIRELESS” page of “NETWORK SETTINGS” selected from On-Screen Menu.

### Note

The wireless LAN cannot be used with VT800.

### ■ Configuration flowchart



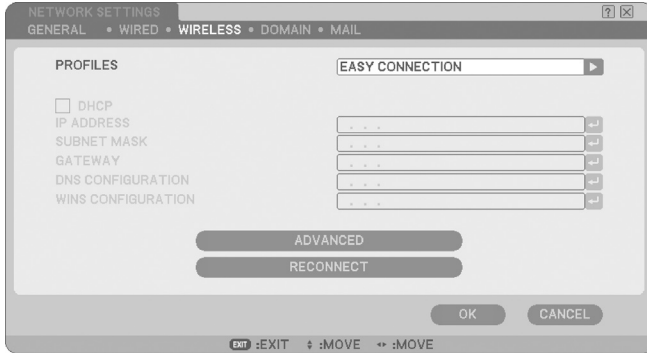
### ■ Setting Wireless LAN

#### 1 Display the “WIRELESS” page of “NETWORK SETTINGS”.

Configure the setting of wireless LAN in the “WIRELESS” page of “NETWORK SETTINGS” selected from On-Screen Menu.

<1> In the “NETWORK SETTINGS” setting window, if the “GENERAL” tab is highlighted, press the (SELECT ►) button to highlight “WIRELESS”.

The “WIRELESS” page is displayed.



- If “NETWORK SETTINGS” is not displayed, refer to “4-1. Displaying On-Screen Menu (NETWORK SETTINGS)” (page 17).

#### 2 Select “PROFILES”.

<1> Press the (SELECT ▼) button once to highlight the “PROFILES” field and press the (SELECT ►) button.

<2> Use the (SELECT ▼/▲) button to highlight “PROFILE 1”, and press the (ENTER) button.

- “PROFILE 1” or “PROFILE 2” can be stored in the memory of the projector as the setting for LAN.
- “EASY CONNECTION” is a mode in which the personal computer that runs Image Express Utility 2.0 in the User Supportware 6 CD-ROM is easily connected to wireless LAN.  
Note that “EASY CONNECTION” does not support software other than Image Express Utility 2.0.
- When “EASY CONNECTION” is selected, the IP ADDRESS and SUBNET MASK do not have to be set. To use “EASY CONNECTION”, the Windows user account must have [Administrator] privilege (Windows Vista) or [Computer Administrator] privilege (Windows XP). It cannot be used with Windows 2000.

### 3 Set “DHCP”.

Check this check box if the network to which the projector is to be connected automatically assigns the IP address via the DHCP server.

<1> Press the (SELECT ▼) button once to highlight the “DHCP” check box and press the (ENTER) button.

If the check box was empty, a check mark is now displayed.

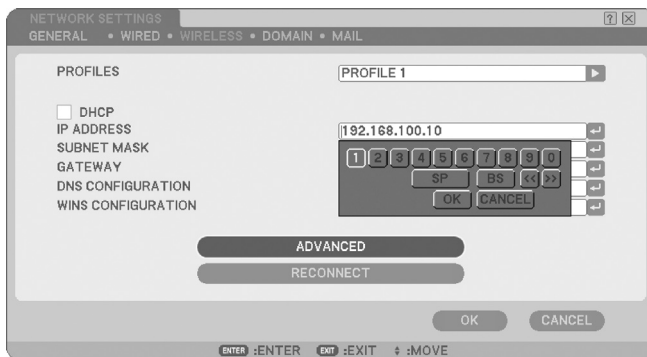
- To clear the check box, press the (ENTER) button once again.
- If “DHCP” is checked, move the highlight to “ADVANCED” and press the (ENTER) button. Proceed to step 9 (○ page 23). Input “DNS CONFIGURATION” field as necessary.
- If “DHCP” is not checked, input “IP ADDRESS”, “SUBNET MASK”, “GATEWAY”, and “DNS CONFIGURATION” as necessary. After each item has been set, move the highlight to “ADVANCED” and press the (ENTER) button. Proceed to step 9 (○ page 23).

### 4 Input “IP ADDRESS”.

If “DHCP” is not checked, input the IP address assigned to the projector by the administrator of the network to which the projector is connected.

<1> Press the (SELECT ▼) button once to highlight the “IP ADDRESS” field and press the (ENTER) button.

The software keyboard is displayed.



<2> Use the (SELECT ▼▲▶◀) button to select the number to input, and press the (ENTER) button. The characters are entered.

<3> Repeat step <2> above to input the IP address.

- Each button on the software keyboard has the following function.
  - “SP” .....Inputs space.
  - “BS” .....Deletes one character to the left of the character insertion position in the “IP ADDRESS” field.
  - “<<”>>” .....Moves the character insertion position in the “IP ADDRESS” field to the left or the right.
  - [OK] .....Finalizes the input character and closes the software keyboard.
  - [CANCEL] .....Cancels the input character and closes the software keyboard.

## 4. Configuring the LAN Settings of the Projector

### 5 Input “SUBNET MASK”.

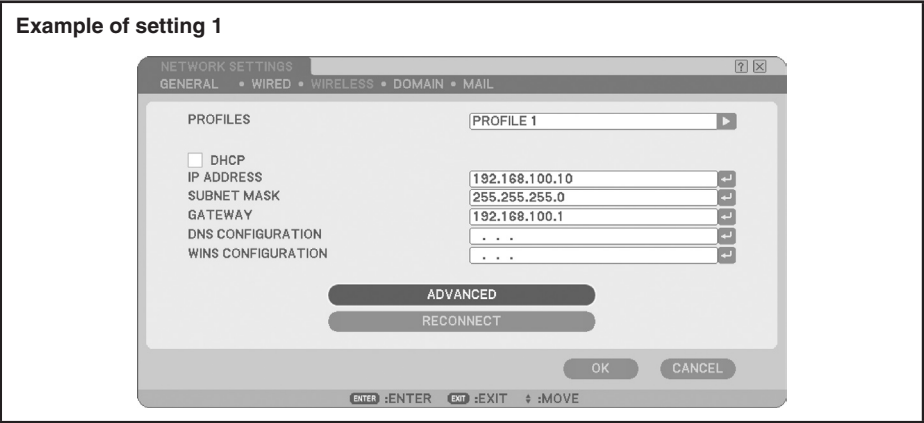
If “DHCP” is not checked, input the subnet mask of the network to which the projector is connected. The method of inputting is the same as that of the “IP ADDRESS” field.

### 6 Input “GATEWAY”.

If “DHCP” is not checked, input the default gateway of the network to which the projector is connected. The method of inputting is the same as that of the “IP ADDRESS” field.

### 7 Input “DNS CONFIGURATION”.

Set the IP address of the DNS server of the network to which the projector is connected. The method of inputting is the same as that of the “IP ADDRESS” field.



### Reference

Configure the [WINS CONFIGURATION] when connecting to a shared folder outside of the subnet using the viewer function.

To configure, input the IP address of the WINS server for the network to which the projector will connect. The input method is the same as the [IP ADDRESS] field. If the [DHCP] field is checked, this is configured automatically by the DHCP server.

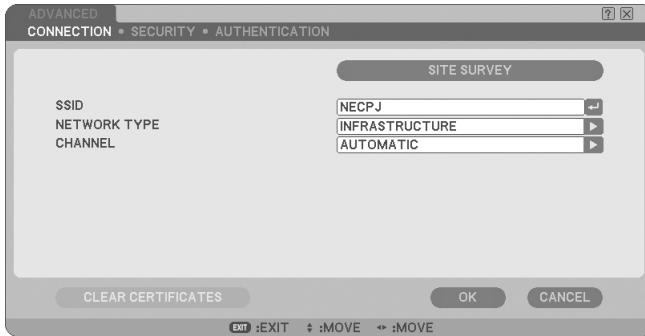
Ask your network administrator for details.

### 8 Select “ADVANCED”.

Set “CONNECTION” and “SECURITY” (encryption) specific to wireless LAN.

<1> Use the (SELECT ▼/▲) button to highlight “ADVANCED” on the “WIRELESS” page and press the (ENTER) button.

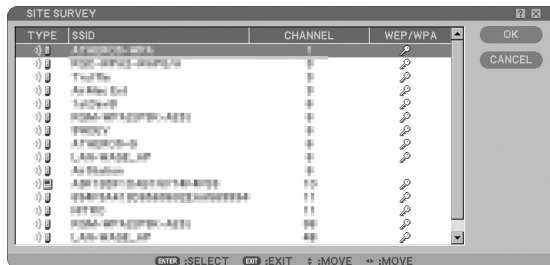
The “ADVANCED” screen is displayed.



## 9 Select SSID from “SITE SURVEY” (if necessary).

A list of SSID that can be connected to by wireless LAN in the current location are displayed. Select the SSID to connect to from within the list. When an SSID is selected from the list, the “SSID” field, “TYPE” field and “CHANNEL” field will also be automatically set.

- <1> Press the **(SELECT ▼)** button once to highlight “SITE SURVEY” and press the **(ENTER)** button. The projector begins scanning for SSIDs. When SSID scan is complete, a list of SSID is displayed.



### Icon



..... Wireless access point



..... Personal computer (AD HOC)



..... WEP, WPA-PSK, WPA-EAP, WPA2-PSK, or WPA2-EAP setting

- <2> Use the **(SELECT ▼/▲)** button to highlight the SSID of the network to connect to. Press the **(SELECT ►)** button once to highlight [OK] and press the **(ENTER)** button. If the SSID you want to connect to is not on the list, press the **(EXIT)** button.

### Note

To connect an SSID that has WEP, WPA-PSK, or other security settings, the same setting must be made on the projector (▶ page 25).

**10 Input or edit “SSID” (if necessary).**

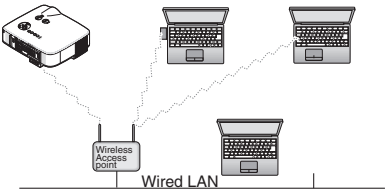
SSID selected in “SITE SURVEY” are automatically input.  
If the highlight is moved to the “SSID” field and the **(ENTER)** button is pressed, a software keyboard is displayed and characters can be input or edited.  
The default setting of the projectors is “NECPJ”.

**11 Select “NETWORK TYPE” (if necessary).**

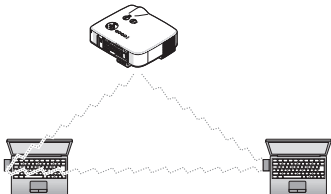
The communication mode of the SSID selected in “SITE SURVEY” is automatically selected.  
The settings can be changed by moving the highlight to the “NETWORK TYPE” field and pressing the **(SELECT ▶)** button.

- “INFRASTRUCTURE” ... This is selected if communication is performed with two or more devices connected by wired or wireless LAN via a wireless access point.
- “AD HOC” ..... This is selected when using the wireless LAN to directly communicate without a wireless access point.

**Example of connection when “NETWORK TYPE” is “INFRASTRUCTURE”**



**Example of connection when “NETWORK TYPE” is “AD HOC”**



**Example of setting 2**

ADVANCED  
CONNECTION • SECURITY • AUTHENTICATION

SITE SURVEY

SSID  
NETWORK TYPE  
CHANNEL

NECPJ  
AD HOC  
AUTOMATIC

CLEAR CERTIFICATES

OK  
CANCEL

ENTER : SELECT    EXIT : EXIT    + : MOVE

**12 Select “CHANNEL” (if necessary).**

Select a channel for communication using wireless LAN.  
If neighboring channel numbers are used in one area, the speed of wireless LAN communication decelerates. To avoid such a situation, select channel numbers that are widely separated.  
The factory default setting is “AUTOMATIC”.



## 13 Select “SECURITY” page (if necessary).

Proceed to step 17 if WEP, WPA-PSK, WPA-EAP, WPA2-PSK, or WPA2-EAP is not set.

<1> Use the (SELECT ▼/▲) button to select the “CONNECTION” tab, and press the (SELECT ►) button to highlight the “SECURITY” tab.

The “SECURITY” page is displayed.



## 14 Select “SECURITY TYPE”.

Selects whether or not to use security settings.

To use security settings, select the “SECURITY TYPE”.

DISABLE	Encryption is not performed. There is a risk of transmitted data being intercepted by a third party.
WEP(64BIT)	Encryption is performed using WEP with a 64-bit long secret key.
WEP(128BIT)	Encryption is performed using WEP with a 128-bit long secret key. This offers enhanced security when compared to a 64-bit secret key.
WPA-PSK/WPA-EAP/ WPA2-PSK/WPA2-EAP	More secure than WEP type. For setting details, refer to “WPA Setting Guide” on the User’s Manual CD-ROM.

## 15 Select “KEY SELECT” (only when WEP is selected).

If “WEP (64BIT)” or “WEP (128BIT)” is selected from “SECURITY TYPE”, select which of the following encryption keys, “KEY 1” to “KEY 4”, is to be used.

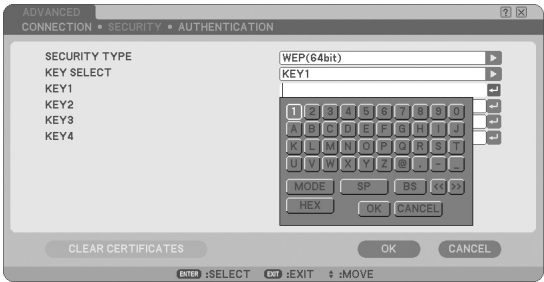
**16 Input “KEY 1” to “KEY 4” (only when WEP is selected).**

If “WEP (64BIT)” or “WEP (128BIT)” is selected from “SECURITY TYPE”, input an encryption key. Set the same encryption key as the wireless access point and personal computer to be connected by the wireless LAN.

Two types of keys can be input for SECURITY.

SECURITY TYPE	Alphanumeric Character (ASCII)	Hexadecimal Number (HEX)
WEP (64 BIT)	5 characters	10 characters
WEP (128 BIT)	13 characters	26 characters

- <1> Use the (SELECT ▼/▲) button to select an item for which the encryption key is to be input and press the (ENTER) button.  
The software keyboard is displayed.



- <2> Use the (SELECT ▼▲◀▶) button, move the highlight to a character, and press the (ENTER) button.
- <3> Repeat step <2> above to input the encryption key.  
The character is input.
- Each button on the software keyboard has the following function.
    - “MODE” ..... Selects uppercase, lowercase, or special characters.
    - “SP” ..... Inputs space.
    - “BS” ..... Deletes one character to the left of the character insertion position in the encryption key field.
    - “<<”/“>>” ..... Move the character insertion position in the encryption key field to the left or the right.
    - “HEX” or “ASCII” ..... Selects alphanumeric character input or hexadecimal number input.
      - When “HEX” is displayed, alphanumeric characters (ASCII) can be input.
      - To input hexadecimal numbers, move the highlight to “HEX” and press the (ENTER) button. “ASCII” will be displayed instead of “HEX”, and hexadecimal numbers can be input.
      - When hexadecimal numbers can be input, “0x” is automatically displayed at the beginning of the input field.
    - [OK] ..... Finalizes the input character and closes the software keyboard.
    - [CANCEL] ..... Cancels the input character and closes the software keyboard.

### **17 Confirm the “ADVANCED” settings.**

<1> Use the (SELECT ▼/▲) button to highlight [OK] and press the (ENTER) button.  
The “WIRELESS” page is displayed again.

### **18 Reconnect to the network.**

<1> Use the (SELECT ▼/▲) button to highlight “RECONNECT” and press the (ENTER) button.

### **19 Confirm the settings.**

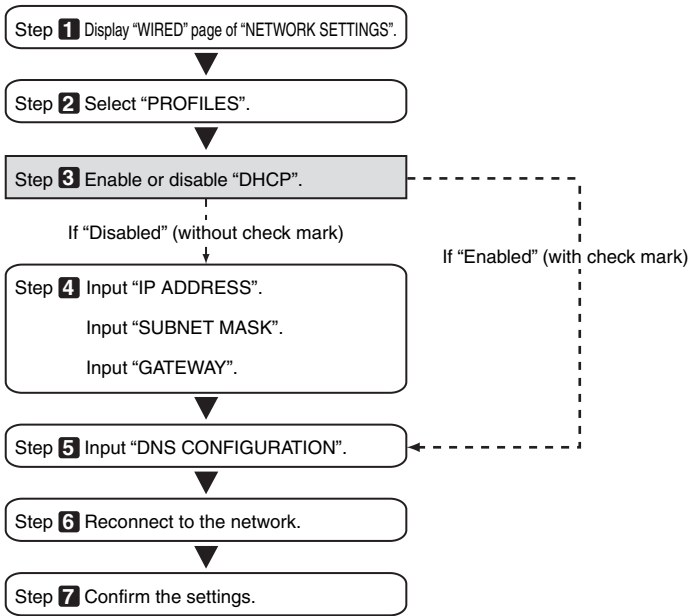
<1> Use the (SELECT ▼/▲) button to highlight [OK] and press the (ENTER) button.  
The contents of the setting are stored in the memory of the projector.

4-3. Wired LAN

When connecting a LAN cable to the LAN port of the projector, configure the LAN settings in the “WIRED” page of “NETWORK SETTINGS” selected from On-Screen Menu.



■ Configuration flowchart



## ■ Setting Wired LAN

### 1 Display the “WIRED” page of “NETWORK SETTINGS”.

Configure the setting of wired LAN in the “WIRED” page of “NETWORK SETTINGS” selected from On-Screen Menu. If “NETWORK SETTINGS” is not displayed, refer to “4-1. Displaying On-Screen Menu (NETWORK SETTINGS)” (🔍 page 17).

### 2 Select “PROFILES”.

“PROFILE 1” or “PROFILE 2” can be stored in the memory of the projector as the setting of LAN.

<1> Press the (SELECT ▼) button once to highlight the “PROFILES” field and press the (SELECT ►) button.

<2> Use the (SELECT ▼/▲) button to highlight “PROFILE 1” or “PROFILE 2”, and press the (ENTER) button.

### 3 Set “DHCP”.

Follow the same procedure as in “4-2. Wireless LAN” (🔍 page 19).

### 4 Input “IP ADDRESS”, “SUBNET MASK”, and “GATEWAY”.

Follow the same procedure as in “4-2. Wireless LAN” (🔍 page 19, 20).

### 5 Input “DNS CONFIGURATION”.

Follow the same procedure as in “4-2. Wireless LAN” (🔍 page 20).

### 6 Reconnect to the network.

<1> When all the above items have been input or set, use the (SELECT ▼/▲) button to highlight “RECONNECT” and press the (ENTER) button.

### 7 Confirm the settings.

<1> Use the (SELECT ▼/▲) button to highlight [OK] and press the (ENTER) button.  
The setting is stored in the memory of the projector.

## 5. Configuring the LAN Settings of the PC

([Example] Wireless LAN in Windows Vista: Ad Hoc connection)

This section explains the procedure for Ad Hoc connection of wireless LAN between the personal computer and projector, by using the wireless network setting function with Windows Vista Ultimate.

**Preparation:**

- If the computer you are using does not have a built-in wireless LAN unit, install a commercially available wireless LAN card driver to your personal computer, and complete setup of the wireless LAN card. For details on how to install the driver, refer to the User’s Manual of the wireless LAN card.
- Check the display of the Windows Vista taskbar. If a network connection utility dedicated to a wireless LAN unit or a wireless LAN card is running, terminate that utility.
- Configure the wireless LAN settings of the projector. For details, refer to “4. Setting the LAN Settings of Projector” (📄 page 15).

This section provides an example for when the projector is configured with the following wireless LAN settings.

[Example of projector settings]

Item	Setting
IP Address	192.168.100.10
Subnet Mask	255.255.255.0
SSID	NECPJ
NETWORK TYPE	AD HOC
WEP	64bit
KEY SELECT	KEY1
KEY 1	NECDS

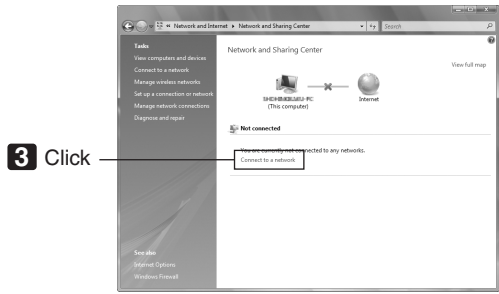
**1 Click Windows [Start] → [Control Panel].**

The “Control Panel” window is displayed.

**2 Click the [View network status and tasks] link that is displayed under [Network and Internet].**

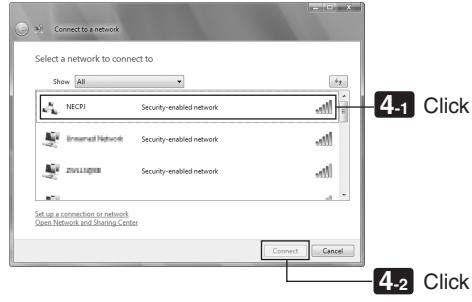
5. Configuring the LAN Settings of the PC ([Example] Wireless LAN in Windows Vista: Ad Hoc connection)

If you are not connected to a network, the following window is displayed.



3 Click [Connect to a network].

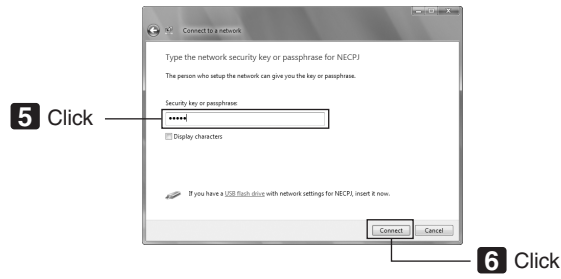
A list of the networks you are able to connect to is displayed.



4 From the list, click the SSID of the projector you want to connect to ("NECPJ" in this example), and click [Connect].

A screen for entering the security key is displayed.

5 Enter the key that you set in the WEP field on the projector ("NECDS" in this example).



6 Click [Connect].

- 7** When the screen shows “Successfully connected to NECPJ”, check “☐ Save this network” and click [Close].

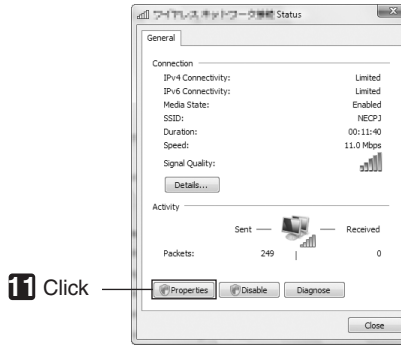
“Set Network Location” window is displayed.

**Note**

- Unless “☐ Save this network” is checked, the Remote Desktop function will not operate normally.

- 8** Click the location that matches the application (e.g., “Work”).
- 9** If a screen is displayed that says “Successfully set network settings”, click [Close].
- The “Network and Sharing Center” window is displayed.
- 10** Click [View status].

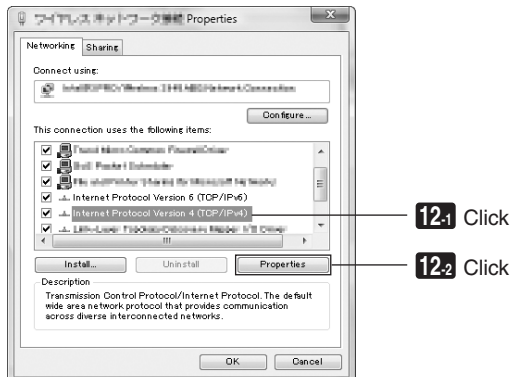
The “Wireless Network Connection Status” window is displayed.



- 11** Click [Properties].

The “Wireless Network Connection Properties” window is displayed.

- 12** From the list displayed in the center of the properties window, select (click) [Internet Protocol Version 4 (TCP/IPv4)], and click [Properties].



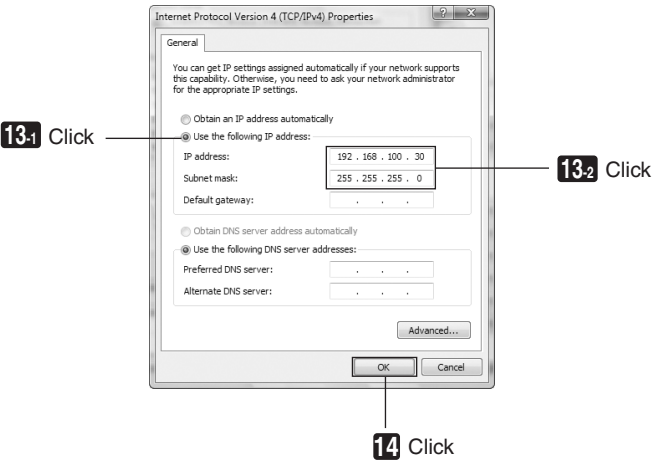


5. Configuring the LAN Settings of the PC ([Example] Wireless LAN in Windows Vista: Ad Hoc connection)

**13** Click [Use the following IP address], and input [IP address] and [Subnet mask].

- For example, if the [IP address] and [Subnet mask] of the projector are set as show in “Example of projector settings” on page 30, configure the personal computer as shown below.
- Example IP address and subnet mask settings.

	Projector ( page 30)	Personal computer (Screen Below)
IP Address	192.168.100.10	192.168.100.30
Subnet Mask	255.255.255.0	255.255.255.0



**14** Click [OK].

The “Wireless Network Connection Properties” window is displayed.

**15** Click [Close].

The “Wireless Network Connection Status” window is displayed.

**16** Click [Close].

The “Network and Sharing Center” window is displayed.

**17** Click the [X] in the top-right corner of the window.

The window will close.

This completes the configuration of a wireless LAN Ad Hoc connection on the personal computer (Windows Vista).  
The contents of the PC screen can now be transmitted to the projector using each of the programs in User Supportware 6.

6. Configuring the LAN Settings of the PC  
([Example] Wireless LAN in Windows XP: Ad Hoc connection)

This section explains the procedure for Ad Hoc connection of wireless LAN between the personal computer and projector, by using the wireless network setting function with Windows XP Service Pack 2 (SP2).

Preparation:

- Install a commercially available wireless LAN card driver in your personal computer, and complete setup of the wireless LAN card. For details on how to install the driver, refer to the User's Manual of the wireless LAN card.
  - Check the display of the Windows XP taskbar. If a network connection utility dedicated to a wireless LAN card is running, terminate that utility.
  - Configure the wireless LAN settings of the projector. For details, refer to “4. Configuring the LAN Settings of the Projector” (🕒 page 17).
- This section provides an example for when the projector is configured with the following wireless LAN settings.

[Example of projector settings]

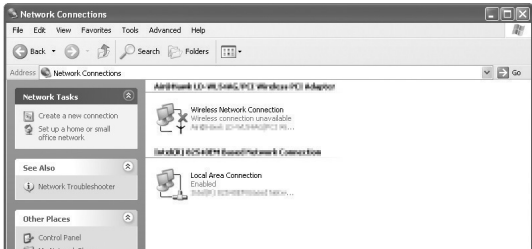
Item	Setting
IP Address	192.168.100.10
Subnet Mask	255.255.255.0
SSID	NECPJ
Mode	Ad hoc
WEP	64 bit
Key Select	Key 1
Key 1	NECDS

1 Click Windows [Start] → [Control Panel].

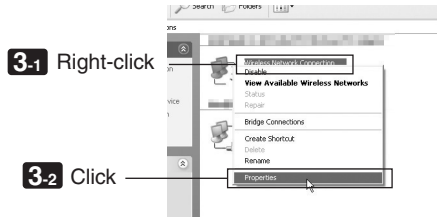
The “Control Panel” window is displayed.

2 Double-click the “Network Connections”.

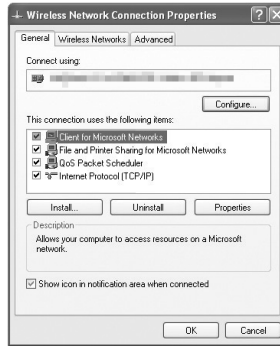
- If the “Control Panel” window displays categories (with a blue background), click [Network and Internet Connections], and then click [Network Connections].
- The “Network Connections” window is displayed.



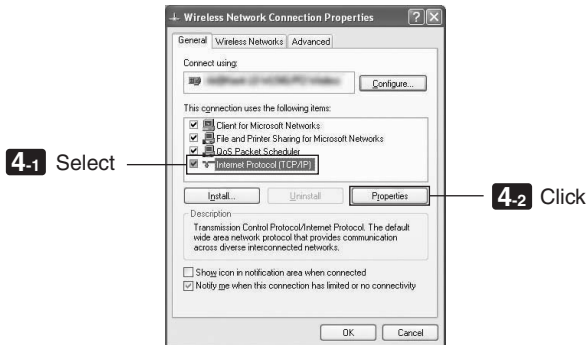
**3 Right-click the [Wireless Network Connection] icon and click [Property].**



The property window for wireless network connections is displayed.



**4 From the list of [This connection uses the following Items:], select (click) [Internet Protocol (TCP/IP)] and click [Properties].**

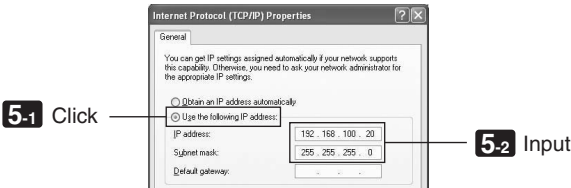


- The property window for wireless network connections is displayed again.

**5** Click [Use the following IP address:], and input [IP address]and[Subnet mask].

- For example, if the [IP address] and [Subnet mask] of the projector are set as show in “Example of projector settings” on page 34, configure the personal computer as shown below.
- Example of setting the IP address and subnet mask.

	Projector ( page 34)	Personal computer (Screen Below)
IP Address	192.168.100.10	192.168.100.20
Subnet Mask	255.255.255.0	255.255.255.0

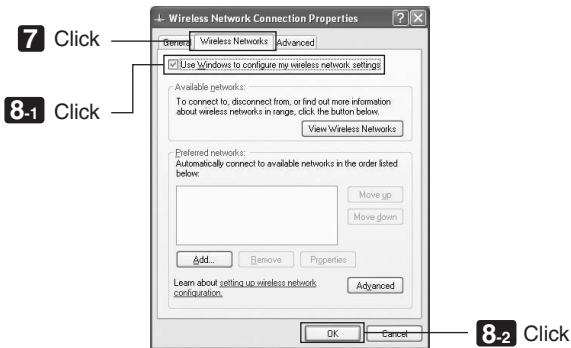


**6** Click [OK].

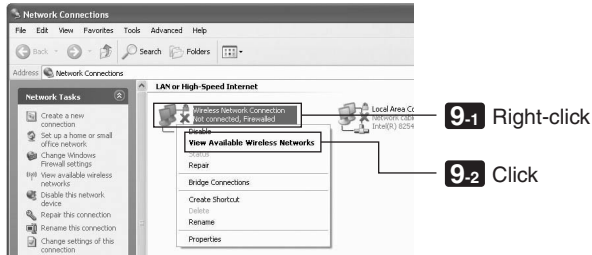
The property window for wireless network connections is displayed.

**7** Click the [Wireless Networks] tab.

**8** Click [Use Windows to configure my wireless network settings], display the check mark (☑) and click [OK].

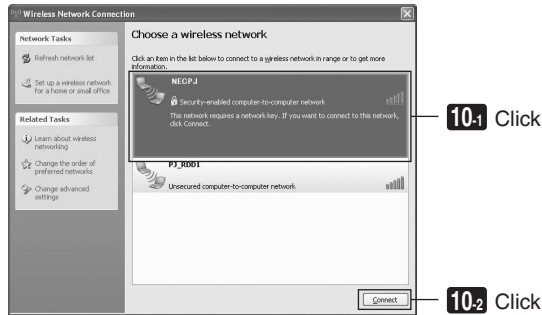


**9** Right-click the [Wireless Network Connection] icon and click [View Available Wireless Networks].



The “Wireless Network Connection” window is displayed.

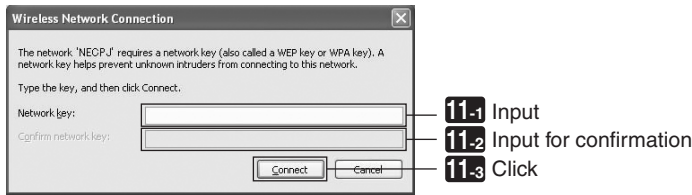
**10** From the list, select SSID of the projector to connect to and click [Connect].



The “Wireless Network Connection” window is displayed.

**11 Input WEP key to set up an encryption key and click [Connect].**

- Enter the “WEP” encryption key. For example, if the WEP setting on the projector is set to “64-bit” and Key 1 on the projector is set to “NECDS”, enter “NECDS” in the Network key field.
- Enter the same encryption key again in the Confirmation field.



The window above only appears if the projector you are connecting to is configured to use a WEP key. Follow the steps below to change the encryption settings. For details, see the Windows Help file.

(1)Click [Change advanced settings] from the screen in step 10 above.

The “Wireless Network Connection Properties” window is displayed.

(2)Click the [Wireless Network] tab.

(3)Select the SSID of the projector under [Preferred Networks] and click [Properties].

The “Properties” of the selected SSID is displayed. Configure the wireless network key under the [Association] tab according to those for the projector.

This completes the configuration of a wireless LAN Ad Hoc connection on the personal computer (Windows XP).

Use each software program in User Supportware 6 to transmit the PC screen to the projector.

## 7. Viewing the “User’s Guide” and Help

Each software program in User Supportware 6 contains a help file that explains the functions and operation methods in detail.

The “User’s Guide” (PDF) also explains the basic operation procedure of each software program carefully.

### 7-1. Displaying “User’s Guide” (PDF)

#### Important

- User Supportware 6 CD-ROM does not contain Acrobat Reader or Adobe Reader. If you cannot open any of the PDF files on your personal computer, download Adobe Reader from the Adobe Systems Incorporated home page, and install it.

**1** Turn on your personal computer to start Windows.

**2** Insert User Supportware 6 CD-ROM in the CD-ROM drive.

The menu is displayed.



**3** Click [Viewing User’s Guide].

[User’s Guide] is displayed.

The User’s Guide can then be browsed by following the operating procedures of Acrobat Reader or Adobe Reader.

### Reference

If the above menu is not displayed, follow these steps.

(\*Example when Windows Vista is used)

1. Click [Start] in Windows.
2. Click [All programs] → [Accessories] → [Run].
3. In the [Open:] field, enter the CD-ROM drive name \*1 (e.g., “Q:\”) followed by “SETUP.EXE” (e.g., “Q:\SETUP.EXE”).

\*1 The CD-ROM drive name will vary depending on your personal computer’s configuration.

4. Click [OK].

The menu is displayed.

---



## 7-2. Using Help

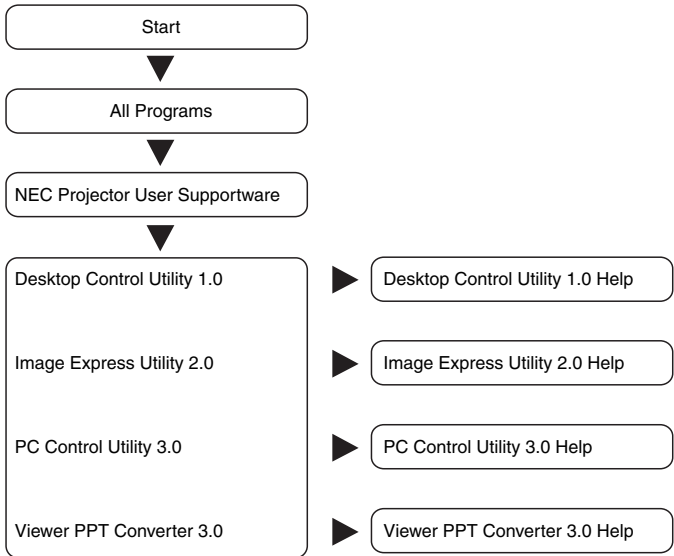
The Help screen describes the functionality and how to operate each of the software programs. This section introduces how to display and use the Help screen.

### Note

- The following instructions use operations under Windows Vista as an example.
- Before displaying Help, install each of the programs onto your personal computer from the User Supportware 6 CD-ROM. You cannot run the programs nor view Help directly from the CD-ROM.

### ■ Displaying Help files other than ArcSoft MediaImpression

Click in the following order.



### Reference

You can also display the Help by starting each program and clicking the [Help] menu or [Help] icon of that program.

## ■ Displaying ArcSoft MediaImpression Help

To display the Help of ArcSoft MediaImpression, start the software and make your selection from the [Extras] → [MediaImpression Help] menu.

- 1** Click [All Programs] in the start menu → [ArcSoft MediaImpression] → [MediaImpression], in that order.

The ArcSoft MediaImpression will start.

- 2** From the ArcSoft MediaImpression menu bar, select [Extras] → [MediaImpression Help] or [NEC Projector User Supportware Help].

## ■ Help Screen Layout

[Hide] button

Shows/hides the left pane.

[Back] button

Displays the previously displayed topic.

[Forward] button

Displays the previously displayed topic when using the [Back] button to step back through the topics.

[Print] button

Prints the displayed Help topic.

[Contents] tab

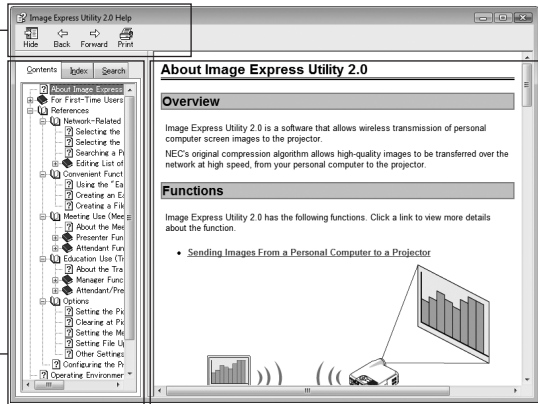
Displays the contents of Help. Select a topic to display contents in the right pane.

[Index] tab

Displays a list of keywords for Help. Select a keyword to display the associated topics.

[Search] tab

Searches through Help for the entered text.



Explanation displaying area

Displays content for the topic selected in the left pane.

- IBM and PC/AT are registered trademarks of International Business Machines Corporation.
- Intel, Pentium and MMX are trademarks of Intel Corporation in the United States and other countries.
- Microsoft, Windows, Windows Vista, PowerPoint, MS, MS-DOS, and DirectX are registered trademarks or trademarks of Microsoft Corporation in the U.S. or other countries.
- © 2009, ArcSoft, Inc. All rights reserved.
- Other manufacturer names and product names in this document are registered trademarks or trademarks of the respective companies.

## **NEC Projector User Supportware 6**

- **Image Express Utility 2.0**
- **Desktop Control Utility 1.0**
- **ArcSoft MediaImpression**
- **Viewer PPT Converter 3.0**
- **PC Control Utility 3.0**