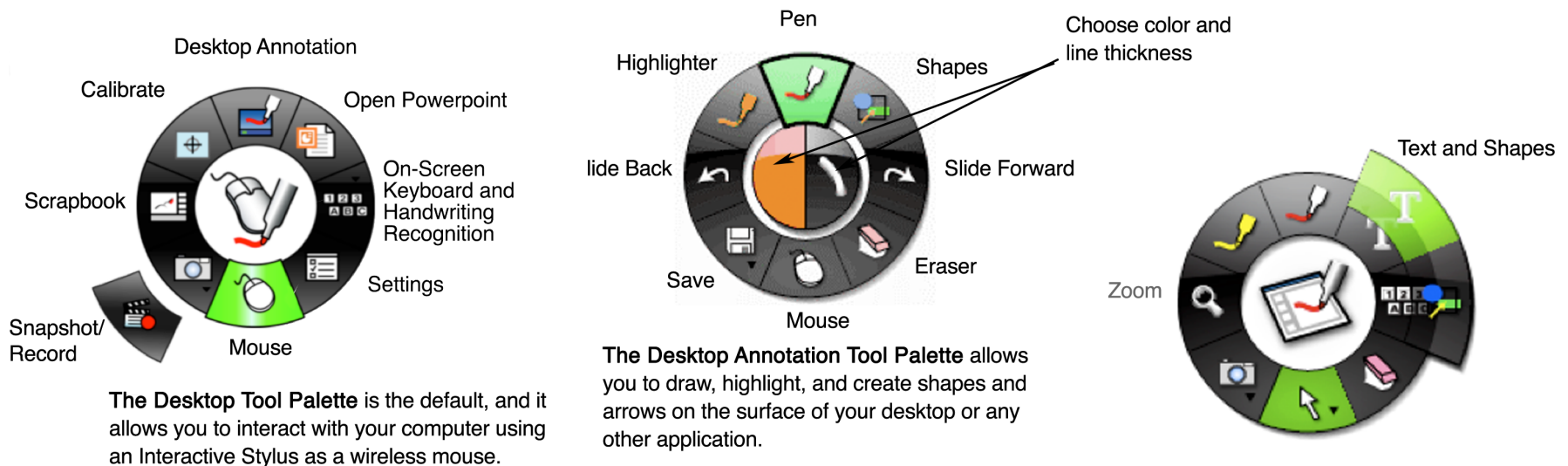


Getting to Know the Tool Palette



The **eBeam Tool Palette** is an onscreen toolbox that can be displayed by pressing Button “B” on the stylus. The **tool palette** allows you to change tools, erase, draw shapes, and many other functions. The eBeam Tool Palette is composed of several different “tool palettes.” These palettes sense when you are in certain applications, and automatically switch to different tool palettes to anticipate your needs as you use the software.

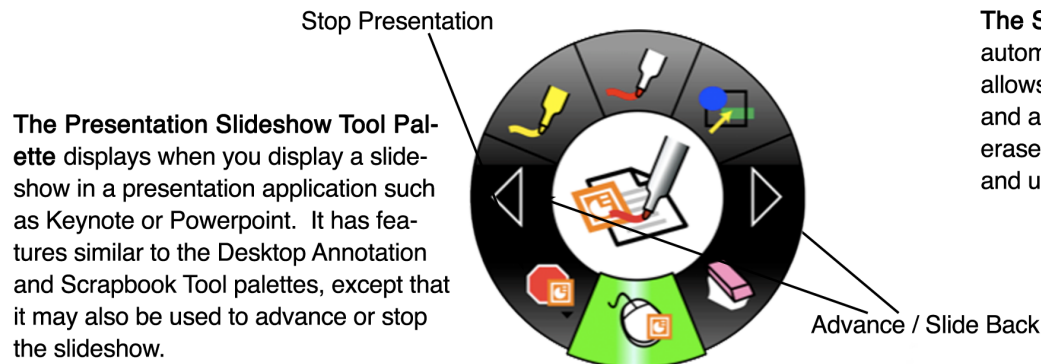


The **Desktop Tool Palette** is the default, and it allows you to interact with your computer using an Interactive Stylus as a wireless mouse.

The **Desktop Annotation Tool Palette** allows you to draw, highlight, and create shapes and arrows on the surface of your desktop or any other application.



The **Scrapbook Tool Palette**, which displays automatically when you use eBeam Scrapbook, allows you to draw, highlight, and create shapes and arrows inside scrapbook, and also to erase, undo, advance the Scrapbook slides, and use the stylus as a regular wireless mouse.



The **Presentation Slideshow Tool Palette** displays when you display a slideshow in a presentation application such as Keynote or Powerpoint. It has features similar to the Desktop Annotation and Scrapbook Tool palettes, except that it may also be used to advance or stop the slideshow.