

## GammaComp™

Providing the best quality image and giving you more color control over your monitor! To simplify control of your monitor's advanced gamma settings, NEC-Mitsubishi introduces its new GammaComp software for your use. This software provides an easy-to-use, intuitive graphical user interface that works with the Display Data Channel/Command Interface (DDC/CI) protocol to adjust gamma settings. These control commands are sent directly to the monitor from your system.

### GammaComp Benefits:

- Supports same types of controls found through On Screen Manager (OSM®), such as custom curves, S-curve and DICOM simulation (LCD2180UX only), individual Red, Green, Blue gamma control adjustment:
- Easy-to-use graphical interface enhanced with test pattern and monitor update for adjustment view.
- The 10-bit resolution provides 4 times as many levels as 8-bit, so color banding problems that occur when using 8-bit tables can be reduced.

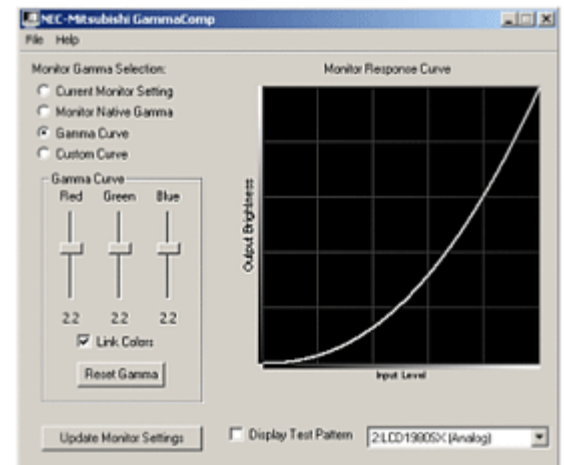
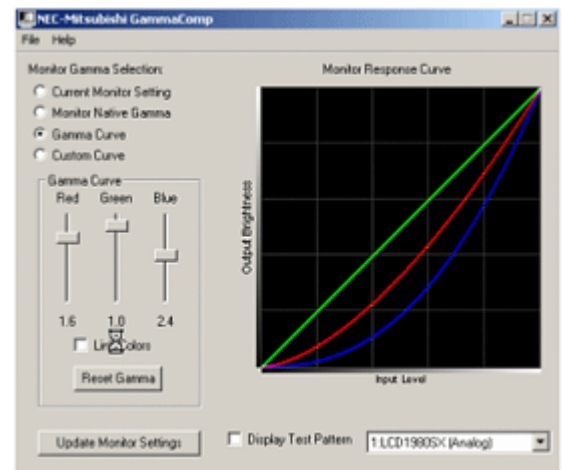
**GammaComp** adjusts the display monitor's internal 10-bit gamma Look-Up-Table, allowing various custom display gamma or Tone-Response-Curves to be achieved. Gamma compensation is done internally in the display at 10-bit resolution. GammaComp uses a two way communications link with the display monitor via the video graphics adapter and normal video cable. No extra cables are necessary. Special support is required in the video graphics display driver in order to provide this functionality. This communications link is called DDC/CI (Display Data Channel - Command Interface).

### PC System Requirements

Microsoft Windows 2000 or XP

DDC/CI – compatible graphics card - NEC-Mitsubishi [NaViSet Video Graphics Adapter DDC/CI Compatibility Chart](#)

### Monitor Compatibility List



- [LCD1980SX](#)
- [LCD2180UX](#)

**Links:**

[Gammacomp Download Form](#)

[Gammacomp feedback form](#)

[White paper](#)

[Readme file](#)