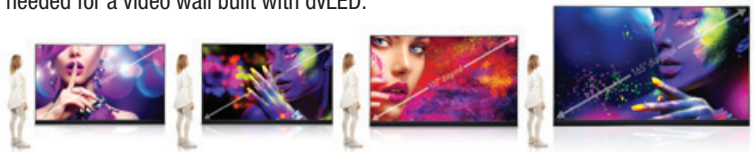




Sharp NEC Display Solutions dvLED solutions:

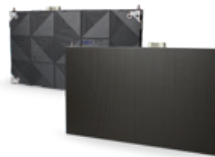
Direct View LED Kitted SKUs

NEC has created LED installation kits that include all of the key components needed for a video wall built with dvLED. These kits feature a standard 16:9 aspect ratio and include the LED controller, installation frame and even spare parts for service. 110", 137", 165" and 220"
0.9mm – 3.8mm



Sharp/NEC FA Series: High-End Indoor

- LED-FA012i2-110 • LED-FA019i2-110 • LED-FA015i2-137 • LED-FA019i2-165
- LED-FA009i2-165 • LED-FA012i2-220 • LED-FA025i2-220
- 3 year warranty (extended warranty available) • 170° viewing angle
- 100k hour lifetime
- Redundant power supplies and controller - Premium LED and performance



Sharp/NEC FE Series: Mainstream Indoor

- LED-FE012i2-110 • LED-FE019i2-110 • LED-FE015i2-135 • LED-FE019i2-165
- LED-FE009i2-165 • LED-FE012i2-220 • LED-FE025i2-220
- 3 year warranty (extended warranty available) • 160° viewing angle
- Single power supply and scan card - Performance without redundancy



Sharp/NEC E Series: Essential Indoor

- LED-E012i-108 • LED-E015i-135 • LED-E018i-162
- LED-E012i-217 • LED-E025i-217
- 2 year Warranty (extended warranty available)
- Affordable / Essential LED performance

