

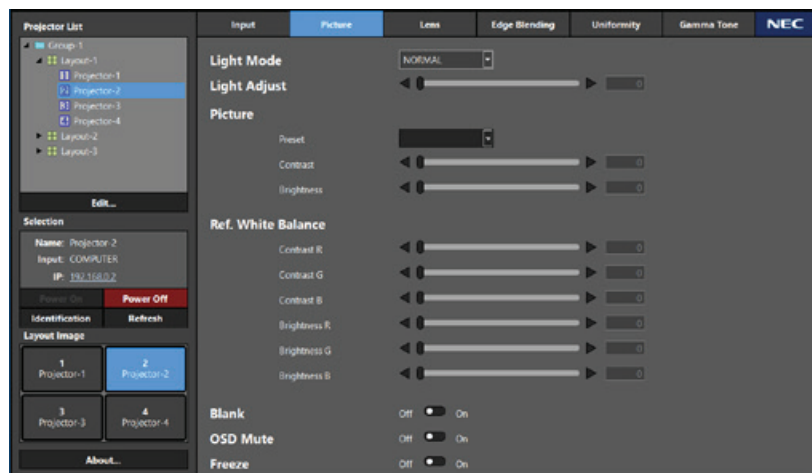
# ProAssist™

## ProAssist™ provides complete control and adjustment of your NEC installation projectors!

Designed for professional installation experts, ProAssist™ is a simple to use control and adjustment solution that is perfect for controlling multiple projectors in an environment whether side by side or edge blended.

### Overview

ProAssist™ is software for controlling the projector and adjusting the projected image on the screen from a computer via a network. It allows necessary adjustments to be carried out easily when combining several projectors together to project a large screen in a classroom, meeting room, auditorium or other large space.

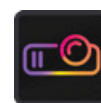


### Supported Models

- NP-PA803UL / NP-PA703UL (Firmware version 1.12 or later)
- NP-PA804UL / NP-PA1004UL
- NP-PX803UL (Firmware version 1.11 or later)
- NP-PX1004UL (Firmware version 1.07 or later)
- NP-PX1005QL / NP-PH2601QL / NP-PH3501QL\*

These models do not support functions

- \*1:Uniformity,
- \*2:Edge Blending and
- \*3:Gamma Tone



## ProAssist™ Multi Projector Control Software



### Features and Benefits

Switching of inputs

Adjustment of the image quality using all picture controls (brightness, contrast, white balance, etc.)

Complete lens functionality to adjust the focus, zoom, lens shift and lens memory over the network

Edge Blending with full adjustment of the overlap area creating a smooth single image from multiple projectors

Uniformity control to balance the overall image so that white is completely uniform across the screen

Gamma Tone allows for adjustment of the image to match the source

For more information on features and compatibility, visit [www.necdisplay.com/support-and-services/proassist/245](http://www.necdisplay.com/support-and-services/proassist/245)