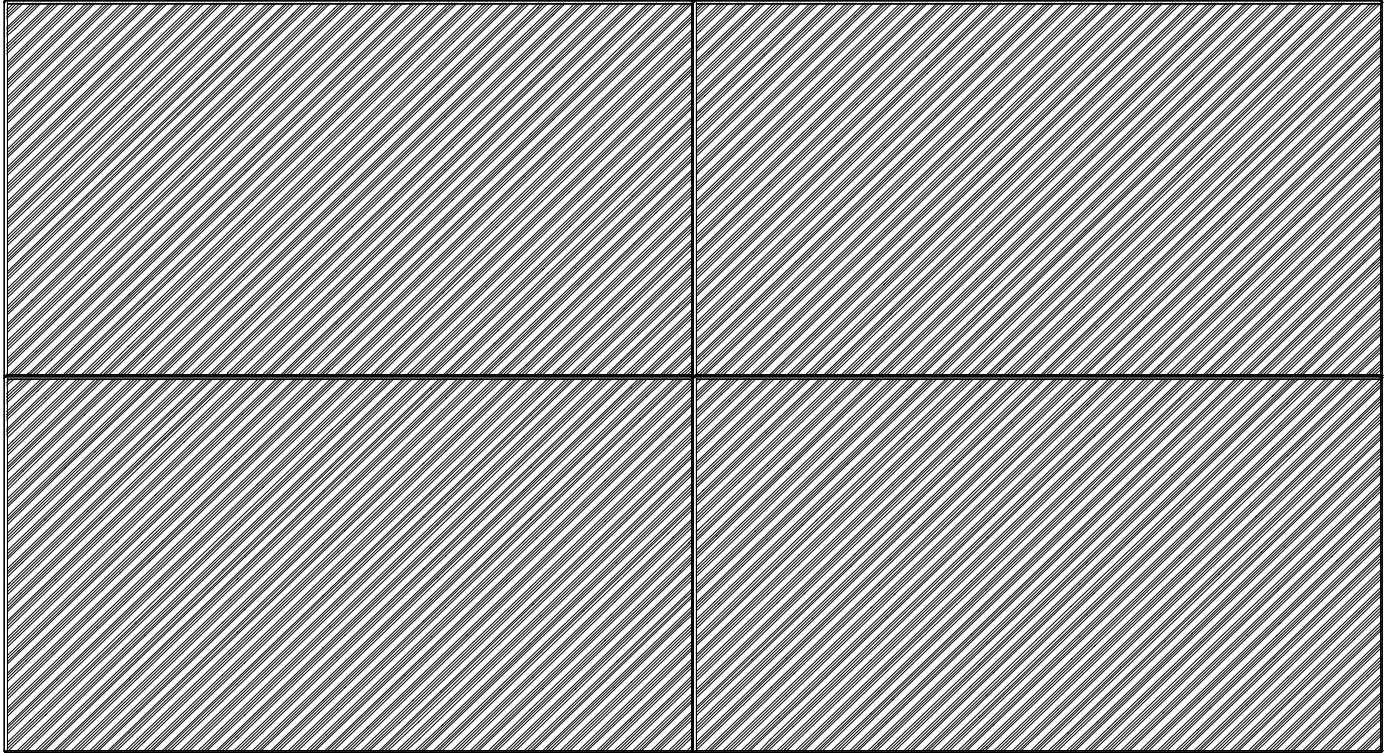


QIG-TMX4P-492SVS  
UN492S-TMX4P, UN492VS-TMX4P

Rev 1.1



### Parts List

- (4) UN492S , UN492VS Displays
- (4) Onsite Service Warranties (ONSITEMN-3Y-17)
- (4) Peerless Pullout Wall Mounts (DS-VW775)
- (1) Peerless Wall Mount Spacer (DS-VWRS091)
- (1) 25ft Cat5e Patch Cable
- (1) IR/Remote Control Kit (KT-RC3)
- (2) Overframe Bezel Kits (KT-49UN-OF)
- (1) SurgeX 4-Port Power Conditioner
- (1) Display Wall Calibrator Kit (KT-LFD-CC2)

### **NOTES:**

- Any walls that this video wall solution is anchored to must be strong enough to support the displays and the installation must be in accordance with any local building codes. All mounting apparatuses must make secure contact to wooden studs.
- Please read entire document before starting installation

## QIG-TMX4P-492SVS UN492S-TMX4P, UN492VS-TMX4P

Rev 1.1

1. For mounting information, please refer to Installation Instructions provided by Peerless Industries, Inc. inside the box of the DS-VW775.
2. Connect the NEC display using the provided DisplayPort cables. Please note that in the picture below, the IN connection is on the left and circled in red while the OUT connection is on the right and circled in blue.



Or

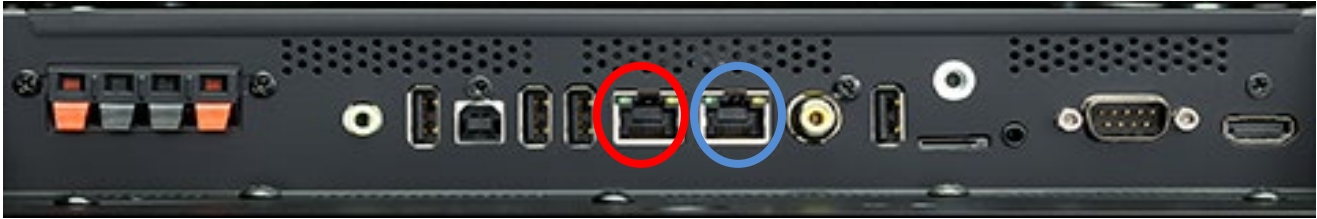
Connect the NEC display using the provided HDMI cables. Please note that in the picture below, the IN connection is on the right side of the display and circled in red while the OUT connection is located on the bottom of the display and circled in blue.



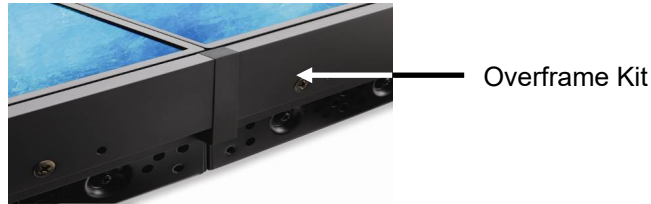
3. Connect the LAN cables that are located within the display box to daisy chain each display. Note that the 25ft cat5e patch cable provided is optional and can be used for connecting the source to display 1 within the wall. Note that in the picture below, LAN1 is on the left and circled in red while LAN2 is on the right and circled in blue. LAN1 should be utilized as the IN connection and LAN2 should be utilized as the OUT connection. The LAN daisy chain can be utilized to pass RS232C, IR Remote or TCP/IP information to each display down the daisy chain.

## QIG-TMX4P-492SVS UN492S-TMX4P, UN492VS-TMX4P

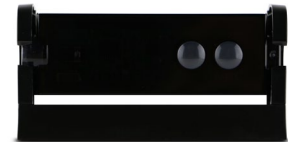
Rev 1.1



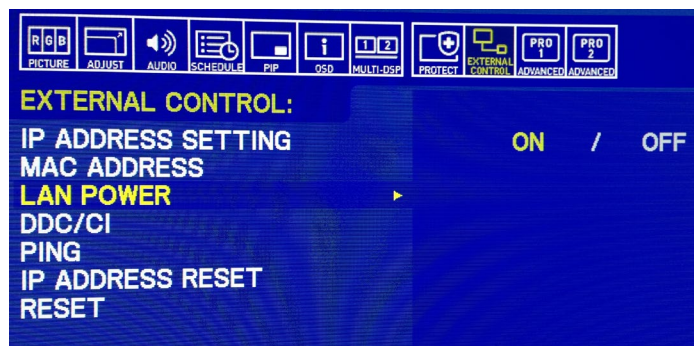
4. Apply the OverFrame bezel kit to the video wall. Please follow instructions provided with kit. KT-49UN-OF is utilized with the UN492S/VS displays and KT-46UN-OF3



5. Screw the IR Receiver (KT-RC3) directly to the outside of the video wall and plug it directly into the IR In terminal of Display 1 as shown below.



6. Power up all of the displays and make sure that the LAN power is on for each display. This can be found in the External Control menu.



## QIG-TMX4P-492SVS UN492S-TMX4P, UN492VS-TMX4P

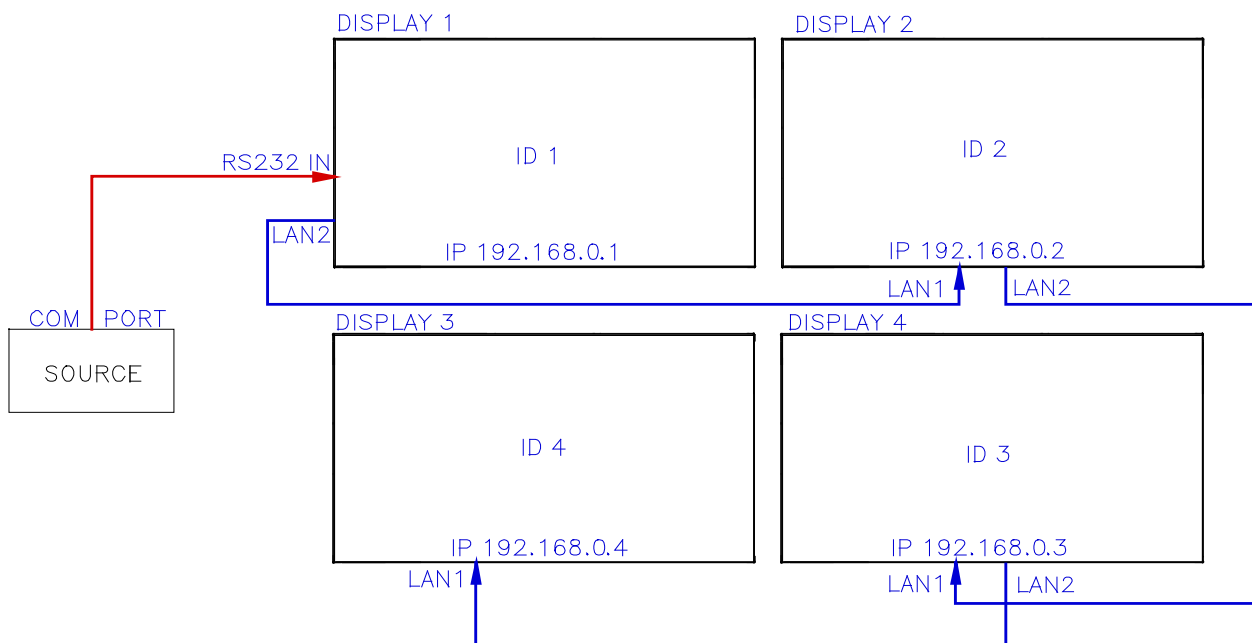
Rev 1.1

Note that LAN power is OFF out of the box so this will need to be changed for each display within the wall.

7. Go into the Multi-DSP menu of the display 1 which will be where you first started the LAN daisy chain and enable the AUTO ID within the ID Control setting. This will automatically set a monitor ID to each display along the LAN daisy chain. Note that the displays will automatically identify each screen consecutively depending on how you LAN daisy chained the units.



If the control setup is as pictured below, each display does not need a unique IP address assigned to still control each individual monitor.

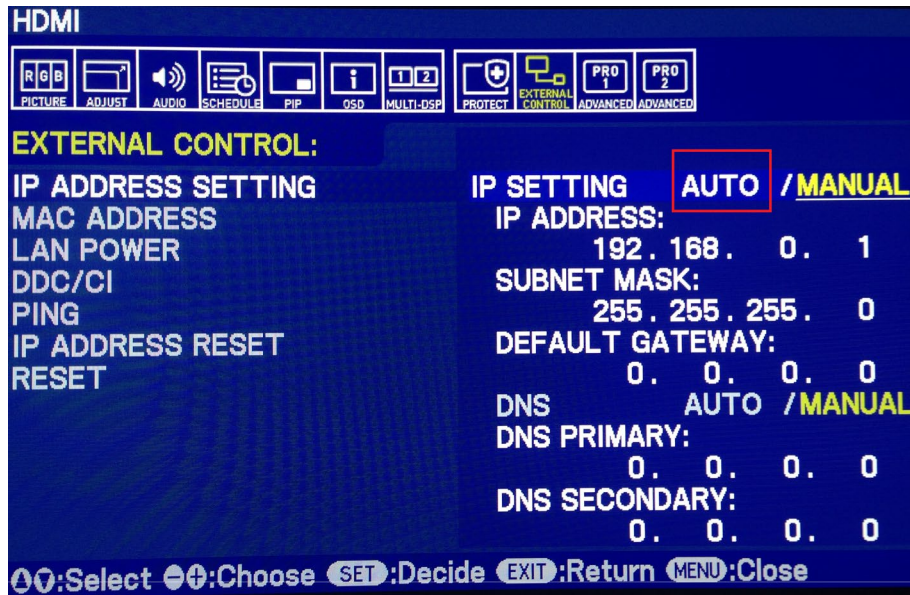


Note that a unique IP address is not necessary to communicate to all displays if display 1 is not connected to a network. The displays will automatically assign themselves IP

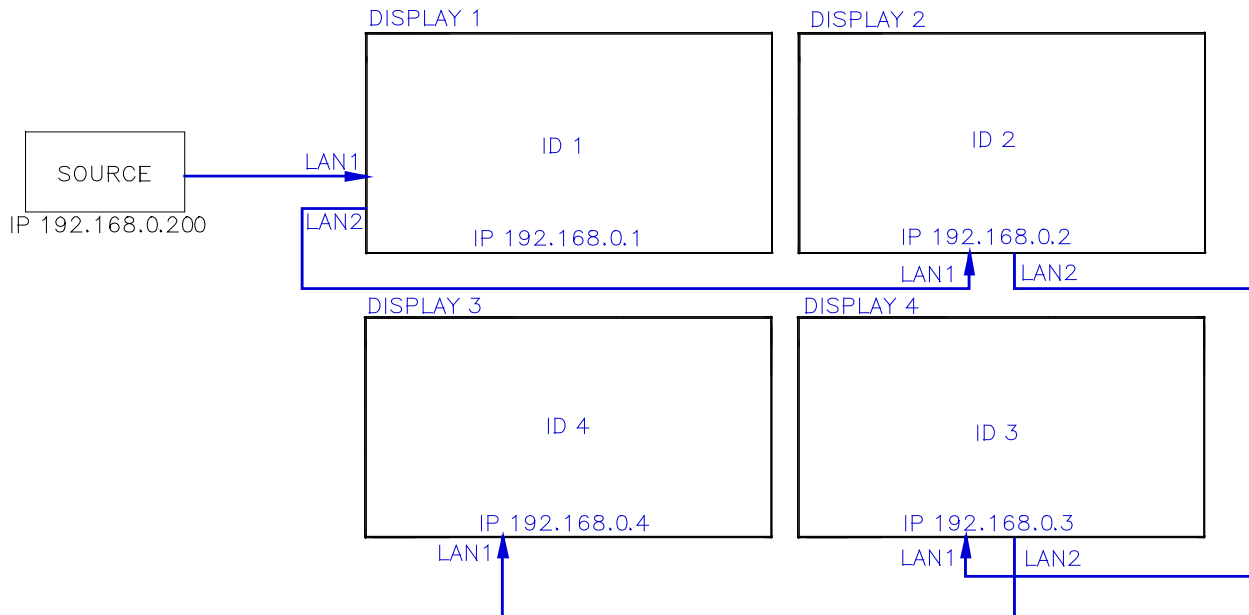
QIG-TMX4P-492SVS  
UN492S-TMX4P, UN492VS-TMX4P

Rev 1.1

addresses if no DNS is detected and the IP Setting within the IP Address Setting in the External Control menu is set to AUTO. Note that this is the setting out of the box.

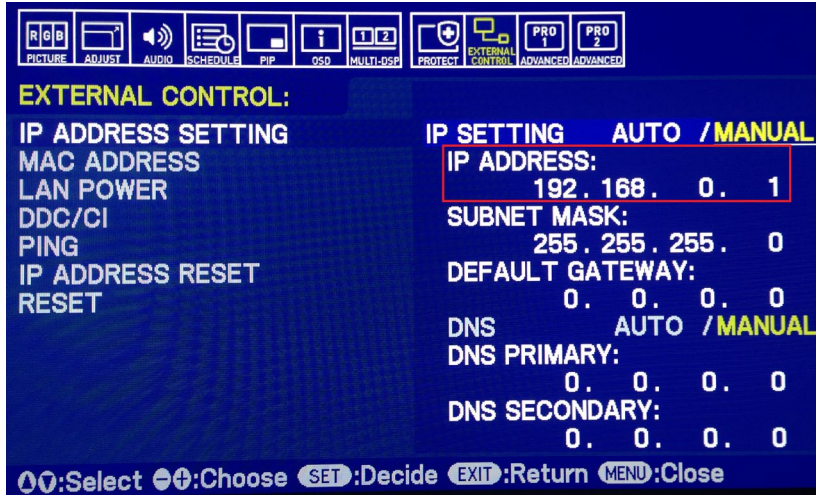


- If display 1 is connected to a network or LAN is going into display 1, like the picture below, each display will need a unique IP address to ensure that communication can successfully go through the daisy chain from screen to screen.



QIG-TMX4P-492SVS  
UN492S-TMX4P, UN492VS-TMX4P

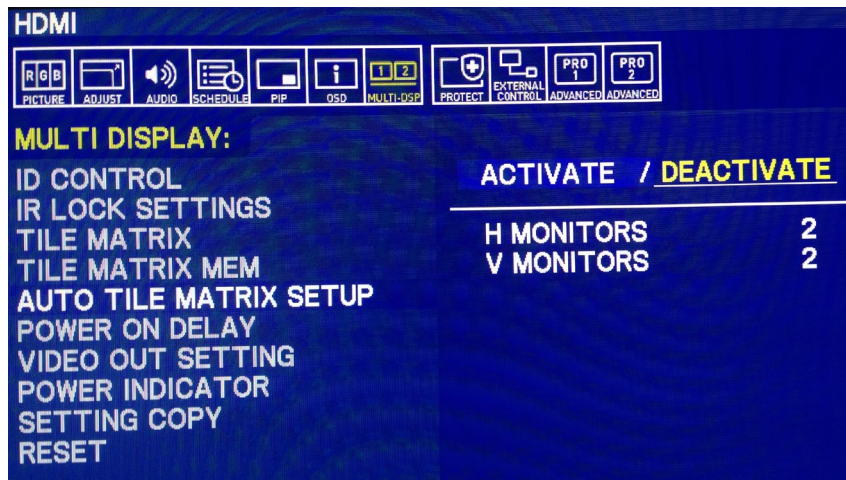
Rev 1.1



- Ensure that video source is connected to the DisplayPort1 (Daisy Chain In) or the HDMI1 (Daisy Chain In) interface of display 1. Note that the DisplayPort (Daisy Chain Out) on each display can be used to output the DP1 or Option (DP) signals that are coming in to that specific display whereas the HDMI Out (Daisy Chain out) will output the HDMI1, DVI, MP and Option (TMDS) input signals. Please refer to the image below:

Main picture	DisplayPort1	DisplayPort2	DVI	HDMI1	HDMI2	VGA (RGB)	VGA (YPbPr)	Video	OPTION		MP
Connector	DisplayPort1 (DAISY CHAIN IN)	DisplayPort2	DVI-D	HDMI1 (DAISY CHAIN IN)	HDMI2 (CEC)	VGA (RGB, YPbPr)		VIDEO	Option Board Slot (SLOT2 (DP))	Option Board Slot (SLOT2 (HDMI))	-
DisplayPort	Yes	No	No	No	No	No	No	No	Yes	No	No
HDMI	No	No	Yes	Yes	No	No	No	No	No	Yes	Yes

- Go into the Multi-DSP menu to activate Auto Tile Matrix Setup as seen in the picture below.



Note that you will need to set the horizontal and vertical monitor dimensions before you activate the Auto Tile Matrix. If done correctly and the LAN is daisy chained as shown on the picture on the previous screen, the displays will automatically adjust so one large picture

**QIG-TMX4P-492SVS**  
 UN492S-TMX4P, UN492VS-TMX4P

Rev 1.1

fills the entirety of the wall. Activating Auto Tile Matrix changes the Tile Matrix, Tile Matrix Mem, Input Signal, Video Out Setting and DisplayPort in the Terminal Settings menu.

**Note that there is a limitation if High-bandwidth Digital Content Protection (HDCP) is utilized. If inputting HDCP protected content through the HDMI, DP, DVI, or OPTION terminal the content will be limited to the number of displays it will daisy chain to. Please refer to the charts below.**

Maximum number of Daisy Chain screens out via **DisplayPort**

Input/OSD function		Signal	HDCP	Screens	Notes
DP1.1a	SST	Full HD	w/o HDCP	100	
DP1.1a	SST	Full HD	HDCP1.x	4	
DP1.2	MST	Full HD	w/o HDCP	4	
DP1.2	MST	Full HD	HDCP1.x	4	
DP1.1a	SST	UHD (30)	w/o HDCP	60	
DP1.1a	SST	UHD (30)	HDCP1.x	4	
DP1.2	MST	UHD (30)	w/o HDCP	1	
DP1.2	MST	UHD (30)	HDCP1.x	1	
DP1.2	SST	UHD (60)	w/o HDCP	60	
DP1.2	SST	UHD (60)	HDCP1.x	4	
DP1.2	MST	UHD (60)	w/o HDCP	1	
DP1.2	MST	UHD (60)	HDCP1.x	1	

Maximum number of Daisy Chain screens out via **HDMI**

Input/OSD function		Resolution	HDCP	Screens	Note
HDMI	mode1	Full HD	w/o HDCP	9	
HDMI	mode1	Full HD	HDCP1.x	8	
HDMI	mode1	Full HD	HDCP2.2	5	
HDMI	mode1	UHD (30)	w/o HDCP	9	
HDMI	mode1	UHD (30)	HDCP1.x	8	
HDMI	mode1	UHD (30)	HDCP2.2	5	
HDMI	mode2	UHD (60)	w/o HDCP	9	*Not available TileMatrix
HDMI	mode2	UHD (60)	HDCP1.x	8	*Not available TileMatrix
HDMI	mode2	UHD (60)	HDCP2.2	5	*Not available TileMatrix
DVI/OPS	-	Full HD	w/o HDCP	9	
DVI/OPS	-	Full HD	HDCP1.x	8	
DVI/OPS	-	UHD (30)	w/o HDCP	9	
DVI/OPS	-	UHD (30)	HDCP1.x	8	
MP	-	Full HD	w/o HDCP	9	

QIG-TMX4P-492SVS  
UN492S-TMX4P, UN492VS-TMX4P

Rev 1.1

---

If you are experiencing issues with this setup, please call our Technical Support number at (800) 632-4662