



This product is UL Listed. It must be installed by a qualified professional installer.

**Maximum Load Capacity: 50 lb**

**Read instruction sheet before you start installation and assembly.**

**⚠ WARNING**

- Installer must verify that the ceiling will safely support four times the combined weight of all attached equipment and hardware.

**IMPORTANT! Be sure not to touch the projector while tightening the set screw on the ball and socket mount. This may cause the image to be unaligned when you let go.**

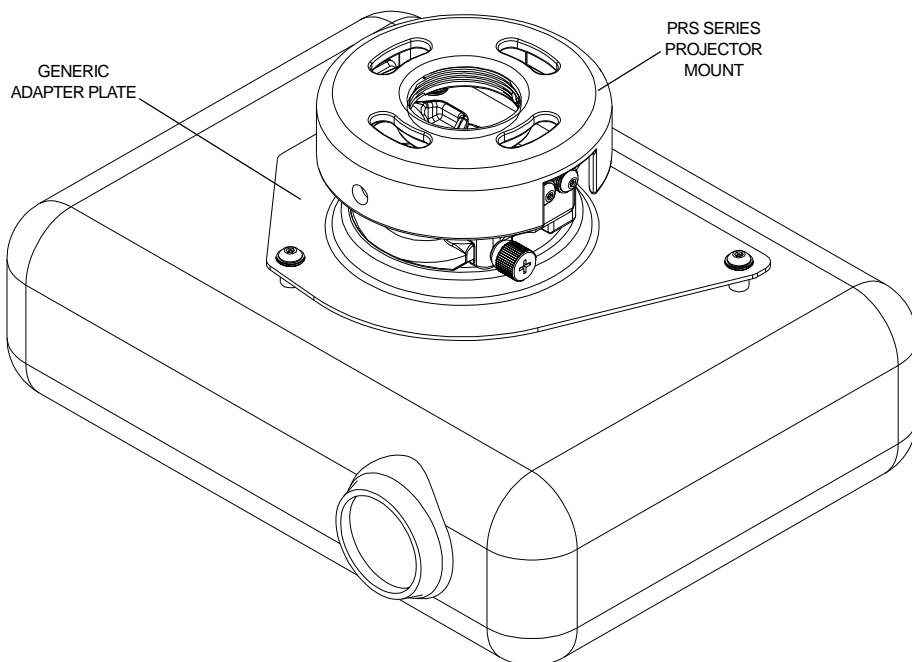
**IMPORTANT! Turn to the appropriate page for your ceiling installation.**

**For installation to Wood Joist Finished Ceiling, Exposed Wood Joists, or Wood Beam Ceiling, see page 3.**

**For installation to Concrete Ceilings, see page 4.**

**For installation to Threaded Rod, see page 5.**

**For installation to Extension Column, see page 5.**

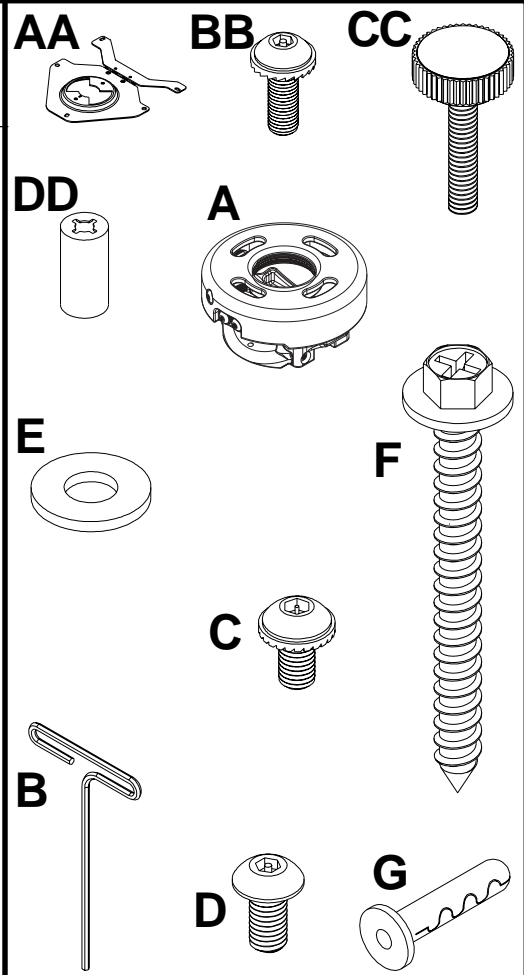


Before you start check the parts list to insure all of the parts shown are included.

## Parts List

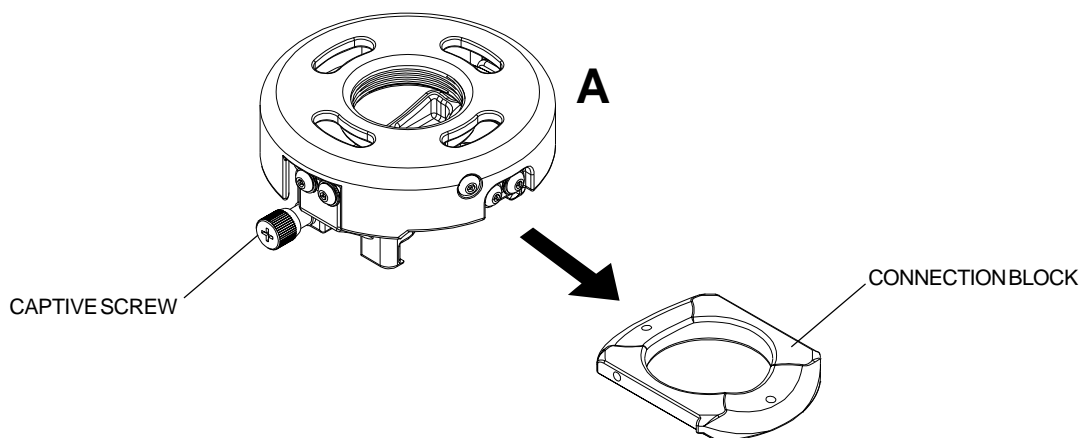
Description	Qty.	Part
AA adapter plate	1	055-2641
BB M4 x 12mm socket pin serrated washer head pin screw	2	510-2079
CC M4 .7 x 20mm knurled knob	1	560-7137
DD retaining spacer .235 x .375 x .38H	1	590-2150
A projector mount assembly	1	055-0422
B 4 mm security t-wrench	1	560-1718
C #10-32 x 3/8" serrated washer head socket pin screw	2	520-2151
D #10-32 x 1/4" socket pin screw	1	520-2196
E 1/4" flat washer	2	540-9440
F #14 x 2.5 phillips hex head wood screw	2	5S1-015-C04
G concrete anchor	2	590-0097

Note: Actual parts may appear slightly different than illustrated



**1**

Disengage connection block from projector mount assembly (A) by unscrewing captive screw and sliding out connection block as shown.



# Installation To Wood Joist Finished Ceilings, Exposed Wood Joists, or Wood Beam Ceilings

- 2** Drill two 5/32" (4 mm) dia. holes to a minimum depth of 2.5" (64 mm). Attach projector mount assembly (**A**) with two #14 x 2.5" (6 mm x 65 mm) wood screws (**F**) and two flat washers (**E**) as shown in **figure 1** or **figure 2** depending on joist orientation. Tighten wood screws (**F**) using 3/8" (10 mm) socket wrench until projector mount assembly (**A**) is firmly attached.

**Note:** Be sure to drill holes into the joist CENTER!

**Skip to step 6.**

## CAUTION

- Do not tighten screws with excessive force. Overtightening can cause damage to mount. Tighten screws to 40 in. • lb (4.5 N.M.) maximum torque.

## ⚠ WARNING

- Installer must verify that the ceiling will safely support the combined load of equipment and all attached hardware and components.

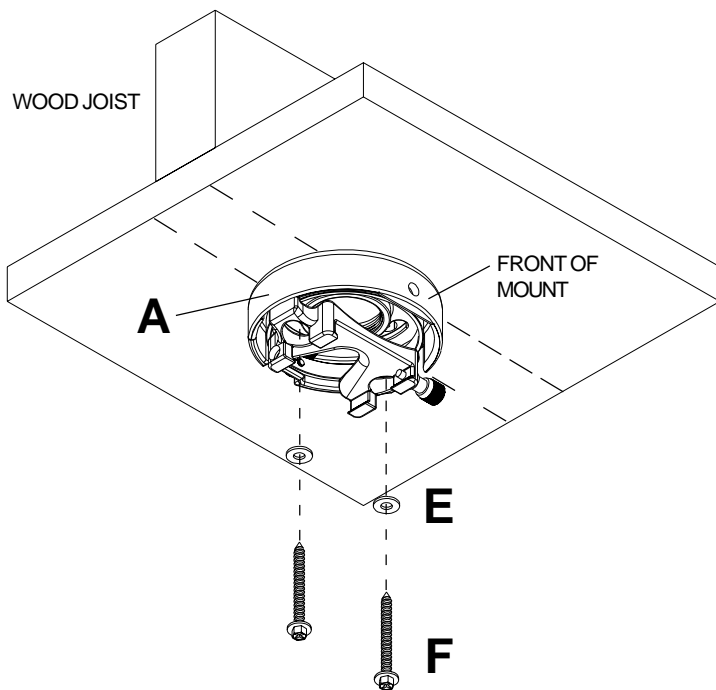


figure 1

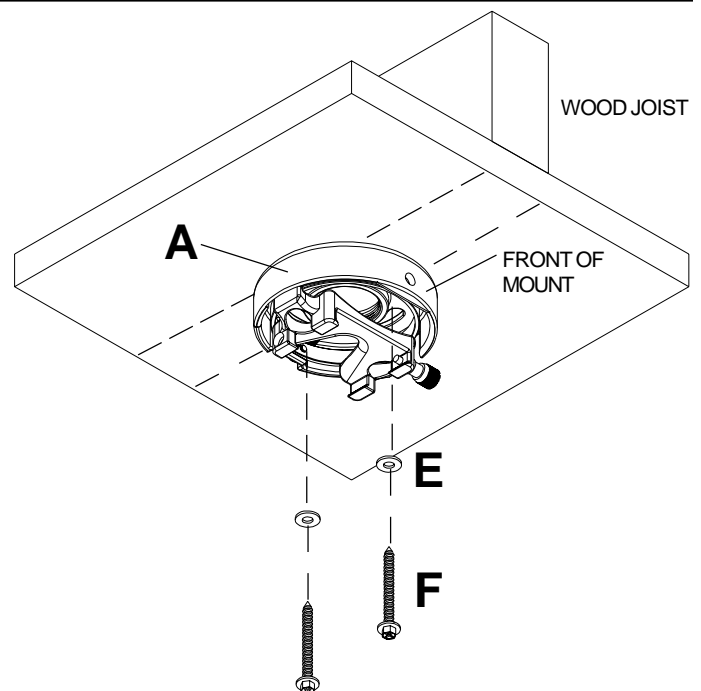


figure 2

# Installation to Concrete Ceilings

**3** Drill two 1/4" (6 mm) dia. holes to a minimum depth of 2.5" (64 mm). Attach projector mount assembly (A) using two concrete anchors (G), two flat washers (E), and two #14 x 2.5" wood screws (F) as shown in **Illustration A** and 1, 2, and 3 (below). Tighten wood screws (F) using 3/8" (10 mm) socket wrench until projector mount assembly (A) is firmly attached.

**CAUTION**

- Do not tighten screws with excessive force. Overtightening can cause damage to mount. Tighten screws to 40 in. • lb (4.5 N.M.) maximum torque.

**WARNING**

- Installer must verify that the ceiling will safely support the combined load of equipment and all attached hardware and components.

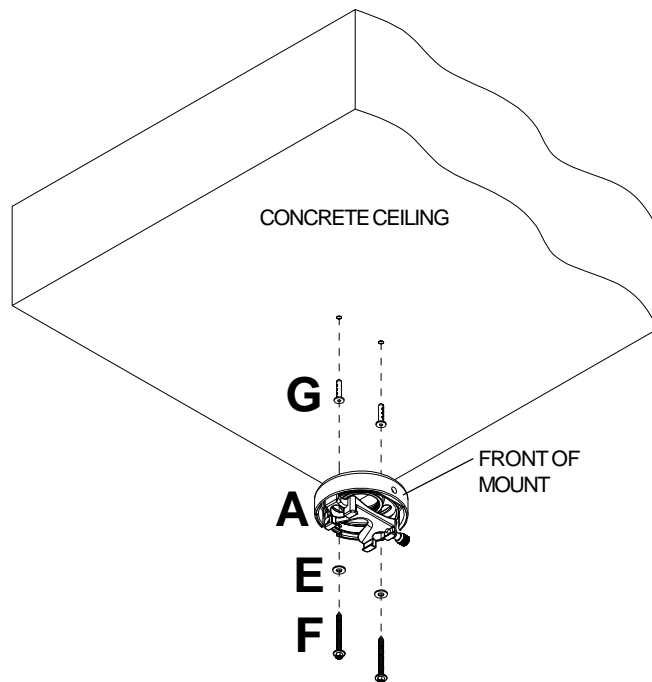
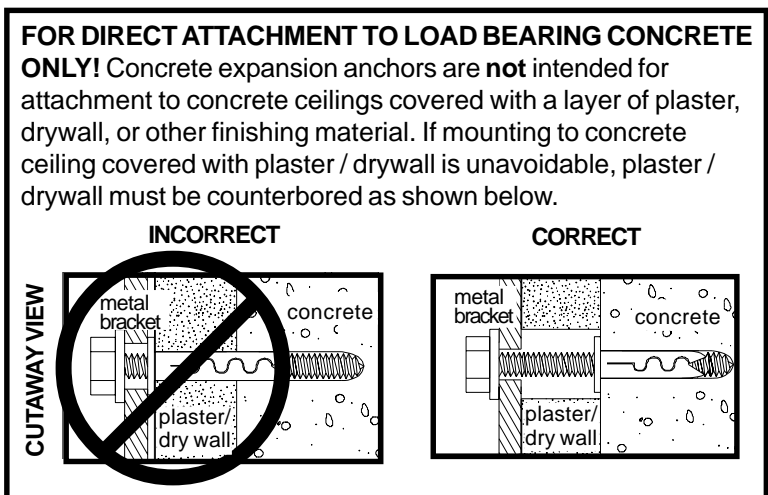
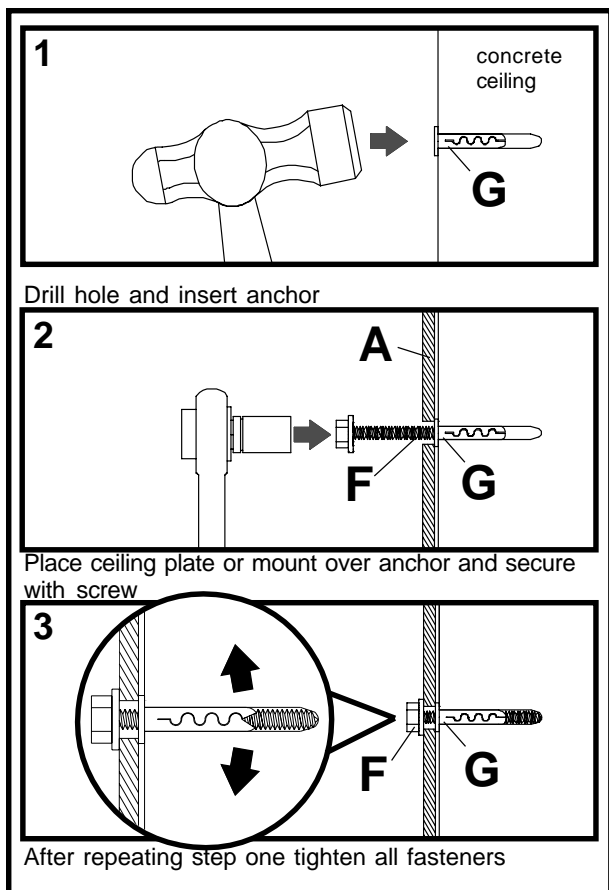


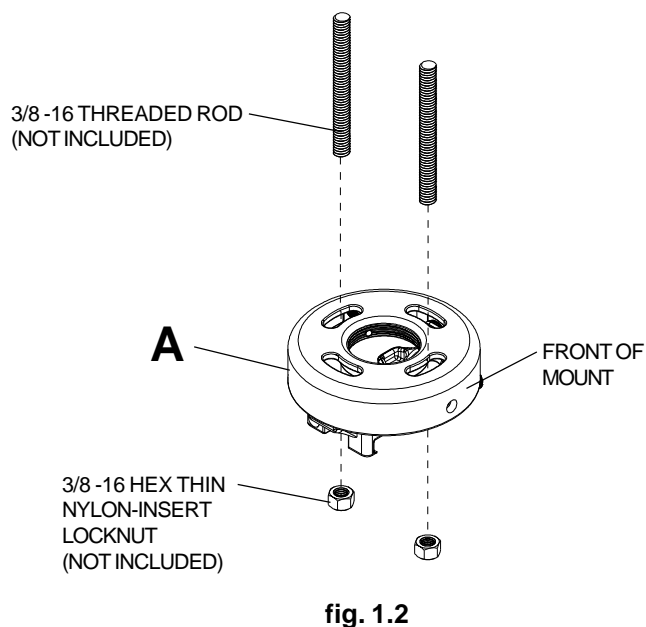
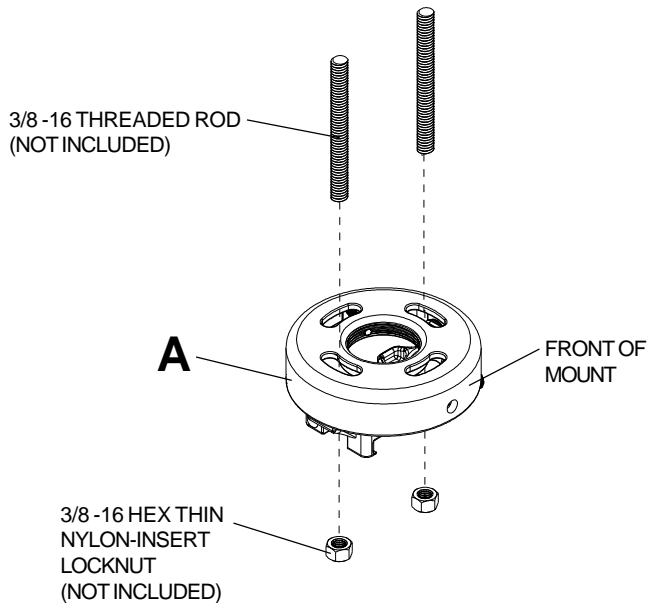
Illustration A



# Installation to Threaded Rod

**4** Attach projector mount assembly (A) to two 3/8-16 threaded rods (not included) using two 3/8-16 hex thin nylon-insert locknuts (not included) as shown in **figure 1.1** or **figure 1.2**.

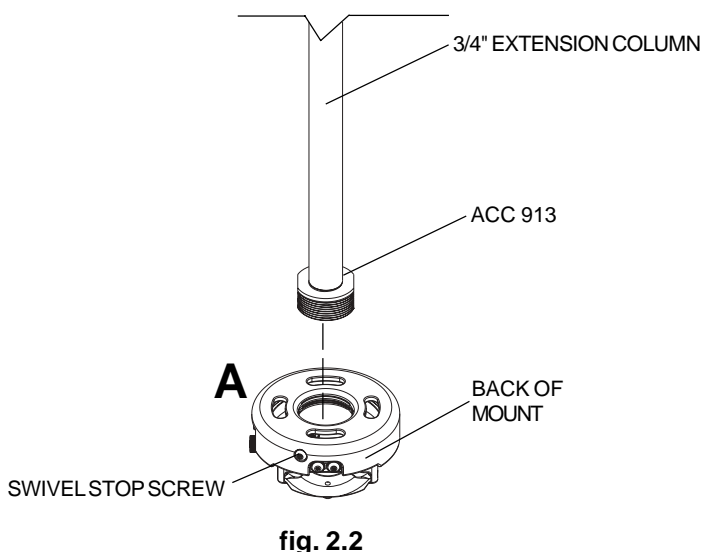
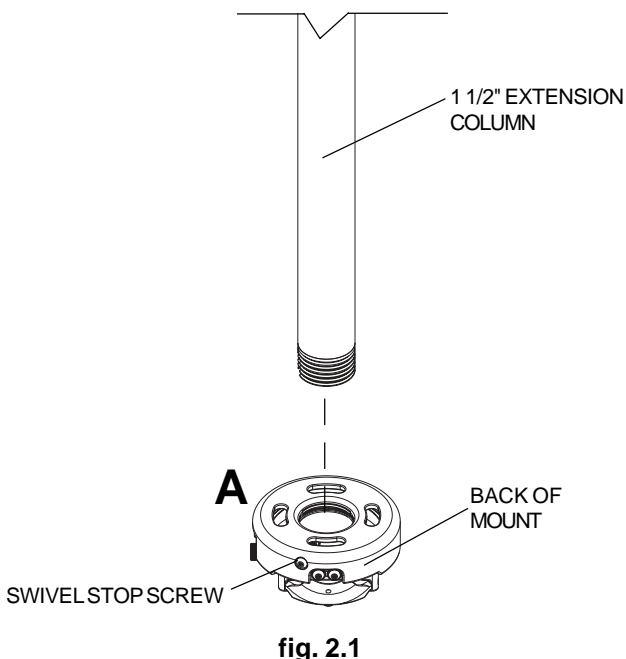
Skip to step 6.



# Installation to Extension Column

**5** Screw projector mount assembly (A) onto extension column (sold separately) as shown in **figure 2.1**. **Note:** For 3/4" extension columns, reducer ACC 913 will be required as shown in **figure 2.2**. Tighten swivel stop screw against extension column or reducer using 4 mm security t-wrench (B). **Note:** Swivel stop screw is used to jam against threads of extension column or reducer to prevent any excess movement of projector mount assembly (A). Do not overtighten screw; overtightening screw will damage threads making it difficult to separate products.

Skip to step 6.

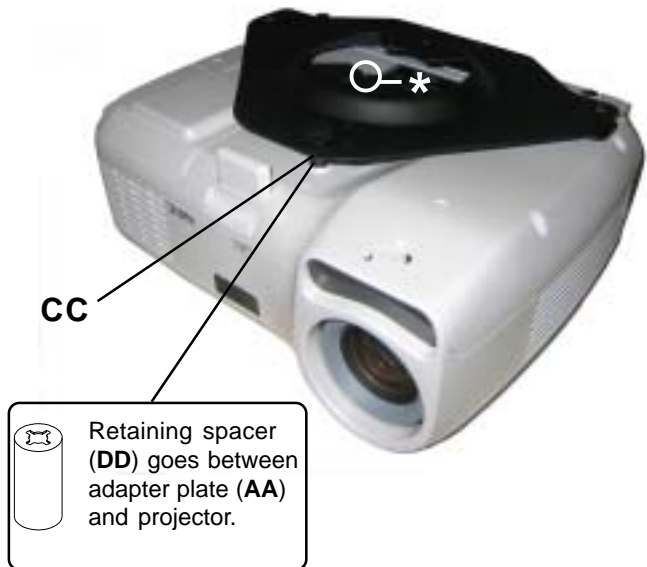


# Installation of Adapter Plate

**6** Flip projector upside down. Using holes indicated below, attach adapter plate (AA) to projector using two M4 x 12 mm screws (BB) using 4 mm security t-wrench (B).



**7** \*Notch indicates front of projector. Close adapter plate (AA) and fasten with thumb screw (CC).

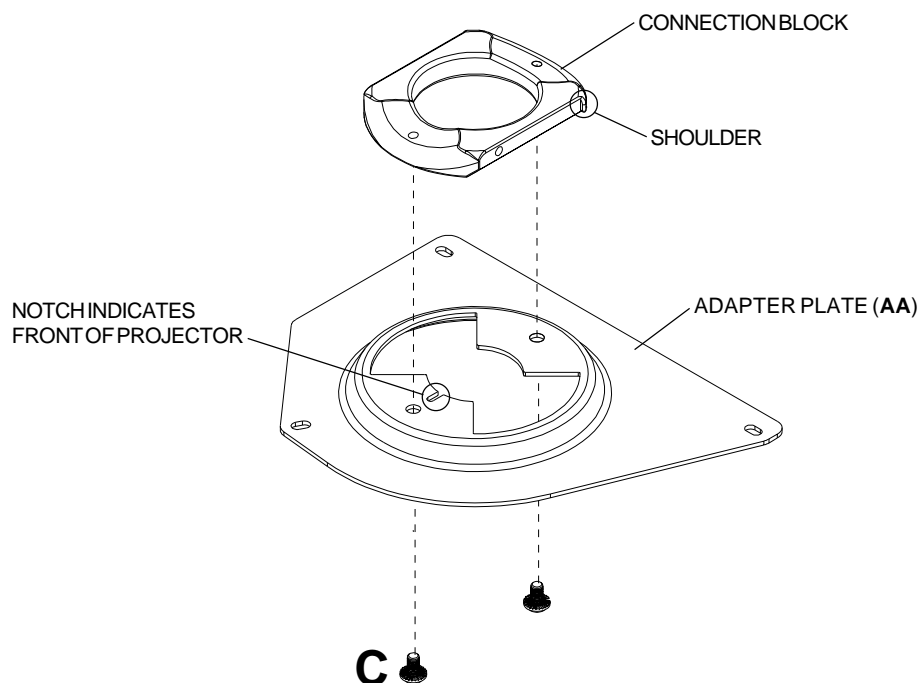


## Final Assembly

**8** **Note:** The projector adapter plate and projector you are installing may differ in appearance from the sample illustrated below.

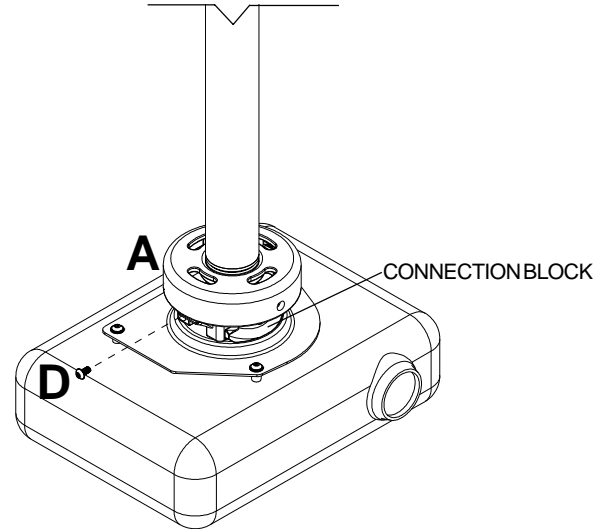
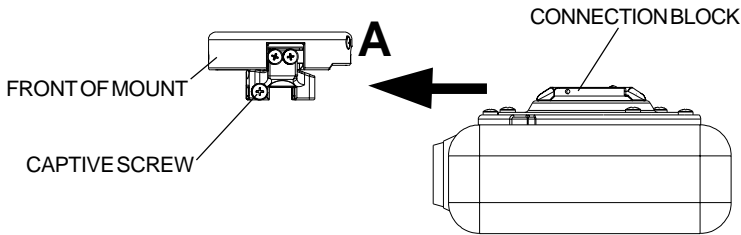
Align shoulder on connection block opposite notch in adapter plate. Attach adapter plate to connection block from projector mount assembly (A) using two #10-32 x 3/8" serrated washer head socket pin screws (C) as shown.

**Note:** For PAP 35, PAP 40, and PAP 45 adapter plates, use two #10-32 x 3/4" screws provided with adapter plate in place of screws (C).



**9** Slide connection block with projector into projector mount assembly (A) as shown. Tighten captive screw to secure projector to projector mount assembly (A).

**10 IMPORTANT:** For security installations, insert one #10-32 x 1/4" socket pin screw (D) through projector mount assembly (A) and into connection block as shown.



## Projector Alignment

**11** **To adjust yaw (swivel) for wood stud, concrete ceiling, and threaded rod mounting applications:** Loosen wood screws (F) (refer to step two), or locknuts for threaded rods (refer to step four), until projector mount can be rotated. Rotate mount to desired position and retighten screws or locknuts.

**To adjust yaw (swivel) for extension column applications:** Loosen screw on projector mount assembly (A) indicated below until projector mount can be rotated. Rotate mount to desired position and retighten screw.

**To adjust pitch (forward and backward tilt):** Loosen two screws on projector mount assembly (A) indicated below. Tilt mount to desired position and retighten screws.

**To adjust roll (side to side tilt):** Loosen two screws on projector mount assembly (A) indicated below. Tilt mount to desired position and retighten screws.

