

SHARP

X141Q
Professional Installation
Projectors



4K UHD

laser
light source

Powerful installation projectors with laser-phosphor light source supports new, demanding projection applications.

Laser Light Module

- 20,000-plus hours of virtually maintenance-free operation with our five year/20,000 hour limited warranty
- High-brightness, lower power consumption enhances applications such as retail, digital signage and theme parks
- Ability to control brightness creating a stable image over longer time periods
- Images appear immediately after power on due to instantaneous start up of the laser

Flexible

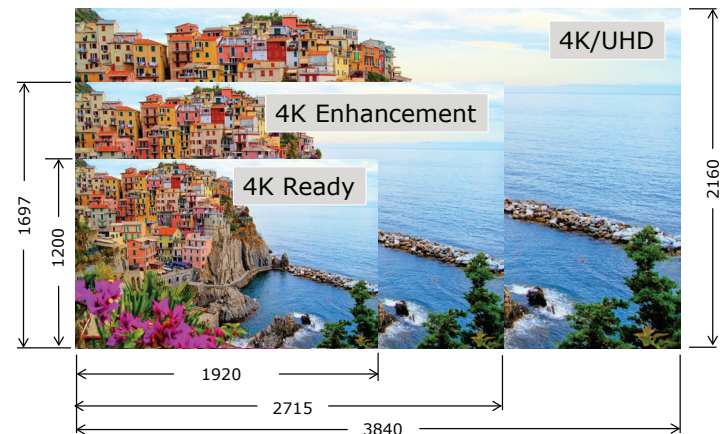
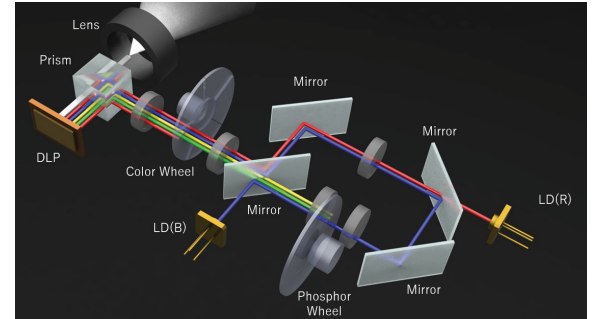
- Enjoy greater installation flexibility with a complete line of optional bayonet style lenses (6) for quick and easy exchange. Lens throw distances range from 1.3 to 141.3ft
- Tilt-free installation capabilities make these projector ideal for almost any install environment, including portrait orientation
- +/-60% vertical lens shift and +/-20% horizontal lens shift capabilities make alignment easy

4K UHD Resolution

- Utilizing the latest DMD (Digital Micromirror Device) chip from Texas Instruments™ with pixel shift capabilities resulting in an unsurpassed viewable resolution of 9.2 million pixels
- Screen resolution matches standard 4K UHD LCD displays providing consistency when developing content for your presentations

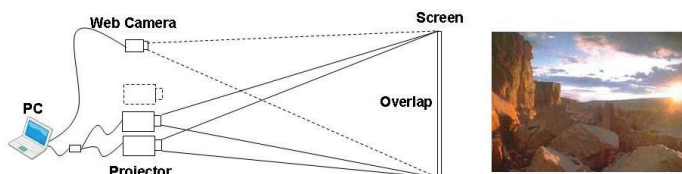
Integrated and Powerful

- Project uncompressed FHD video with integrated HDBaseT
- High performance video processing/scaling creates life-like images
- Integrated software applications such as Crestron RoomView®, AMX Beacon and PJ Link allow for complete interactivity and control



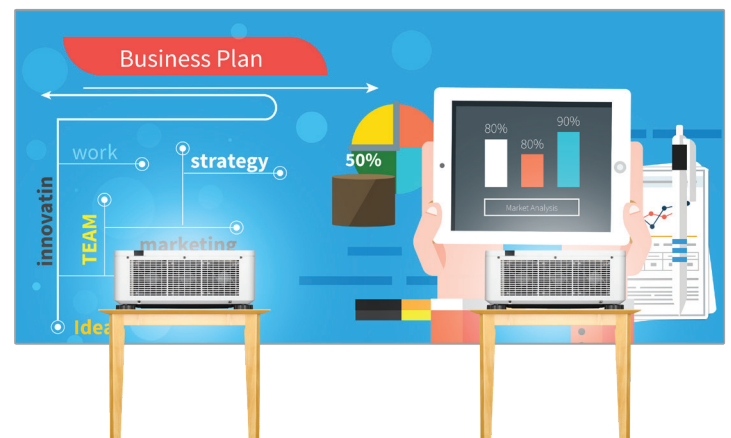
Stacking correction

The industry's first built-in stacking correction capabilities (up to four projectors) allows the projectors to boost an image's brightness up to 54,000 lumens, which is ideal for larger-sized screens and environments with heavy ambient light. This feature also prevents the complete loss of an image, which can happen when using only one projector.



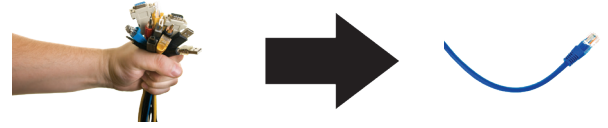
Edge blending

This function seamlessly blends multiple projected images to display a single high-resolution image.



Built-In HDBaseT Support

Simplify your installations with HDBaseT. Optimized for video applications and supporting uncompressed full HD digital video, audio, ethernet, power and various control signals. With only a single cable (up to 100m) to run, infrastructure and labor costs are reduced, installations are significantly easier, and there is no cable clutter to manage. With uncompressed HD video support, images have never been more stunning. What's more, control signals are contained in the same cable.

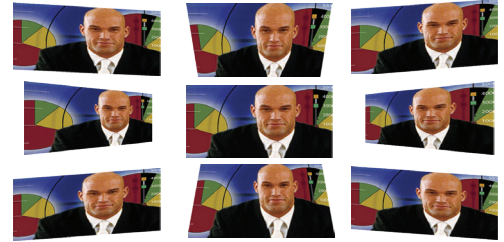


Sealed Optical Engine

- Longer lasting more consistent image and light output
- Maintenance becomes a thing of the past providing peace of mind while lowering maintenance costs
- Eliminates external contaminants from depositing on the optical engine preventing a degradation in image brightness

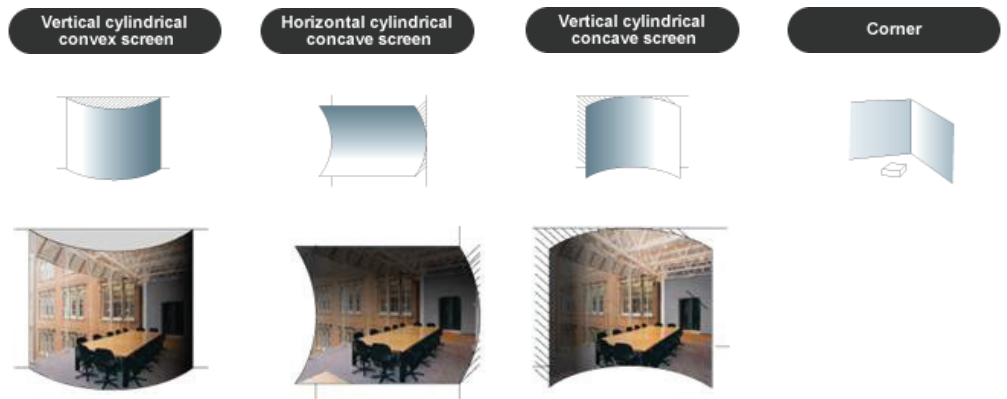
Cornerstone

Enhanced keystone correction allows for horizontal, vertical and diagonal image correction for aligned images even when the projector is set up at an angle to the screen.



Geometric Correction

Projecting an image isn't confined to a standard flat screen or wall with the Sharp X Series. Geometric correction allows these models to project an image on spheres, cylinders, corner angles and many more non-standard surfaces.



Roll Free

When installation requirements dictate the projector needs to be placed at different angles the X Series with Roll Free (360°) capabilities assures it is the correct projector of choice when projecting onto the floor, ceiling or at an angle.



UNIQUE FEATURES

Advanced AccuBlend™ ensures detailed images when non-native resolution sources are connected to the projector

AutoSense™ automatically syncs with any computer signal and features one-touch image optimization

Remote diagnostics enable the user to monitor and make adjustments to the projector remotely

Built-in HTTP page for control and monitoring over a LAN network. Email notification of error messages or lamp end-of-life can be sent to remote locations.

WARRANTY

Registered owners receive a five (5) years or 20,000 hours (whichever comes first) limited warranty including InstaCare next business day exchange.

IN THE BOX

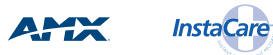
Remote control, batteries, power cord, user's manual on CD-ROM, quick start guide, product registration card.

ACCESSORIES

- IPJ2000CM Ceiling mount
- RMT-PJ40 Replacement remote control
- RGBCBL-PJPX RGB cable
- Optional Lenses XP-57UL, XP-58ZL, XP-59ZL, XP-60ZL, XP-61ZL, XP-62ZL

ORDERING MODEL NUMBERS

- XP-X141Q-B
- XP-X141Q-W



MODEL		XP-X141Q	
Display Technology		0.8" DLP HEP DMD	
Light Output (lumens)	Center	13,500	
	Normal	13,500	
	ECO Mode OFF	13,500	
Resolution	Native	WUXGA 1920 x 1200	
	Maximum	4K UHD 3840 x 2400	
Contrast Ratio (up to)		3,000,000:1 (with Dynamic Contrast)	
Laser Life (up to)		20,000 hours	
Screen Size (diagonal)		Separate Sync / Composite Sync / Sync on G	
Throw Ratio	XP-57UL	0.31 - 0.33:1	
	XP-58ZL	0.55 - 0.75:1	
	XP-59ZL	0.74 - 1.08:1	
	XP-60ZL	1.05 - 1.41:1	
	XP-61ZL	1.40 - 2.11:1	
	XP-62ZL	2.10 - 4.00:1	
Projection Distance		3.58 to 141 ft. / 1.09 to 43m	
Projection Angle		5.8 to 18.1° tele / 11.4 to 25.8° wide	
Lens	Zoom	Motorized	
		XP-57UL	1.06x
		XP-58ZL	1.36x
		XP-59ZL	1.46x
		XP-60ZL	1.34x
		XP-61ZL	1.51x
	Focus	Motorized	
		XP-57UL	F=2.05 to 2.11, f= 5.81 - 6.17mm, TBD
		XP-58ZL	F=2.04 to 2.35, f= 10.03 - 13.60mm, TBD
		XP-59ZL	F=2.02 to 2.33, f= 13.47 - 16.67mm, 6.2 lbs. / 2.82kg
		XP-60ZL	F=1.90 to 2.09, f= 18.78 - 25.30mm, 6.4 lbs. / 2.91 kg
		XP-61ZL	F=1.80 to 2.11, f= 25.04 - 37.57mm, 4.9 lbs. / 2.23 kg
Shift	+/-20% Vertical, +/-50% Horizontal (XP-57UL, XP-58ZL, XP-59ZL), +/-20% Vertical, +/-60% Horizontal (XP-60ZL, XP-61ZL, XP-62ZL)		
	Shutter	Laser Shutter	
Keystone Correction		+/- 36° horizontal, +/- 36° vertical	
Synchronization Range	Horizontal	15kHz, 24-153kHz	
	Vertical	24, 25, 30, 48 Hz, 50 to 85 Hz, 100, 120 Hz	
Supported Video Standards		24, 25, 30, 48 Hz, 50 to 85 Hz, 100, 120 Hz	
SD/HD Video Signal Compatibility		480i, 480p, 576i, 576p, 720p, 1080i, 1080p, 4K	
PC Signal Compatibility		VGA, SVGA, XGA, SXGA, SXGA+, UXGA, WUXGA, Quad HD	
Macintosh Compatibility		Yes	
Input Terminals	RGB1 (analog)	0	
	RGB1 (digital)	HDMI (V2.0) w/HDCP (V2.2/1.4)	
	RGB2 (digital)	HDMI (V2.0) w/HDCP (V2.2/1.4)	
	RGB3 (digital)	DP w/HDCP (V1.3)	
	RGB4 (digital)	DP w/HDCP (V1.3)	
	RGB5 (digital)	HDBaseT w/HDCP (V2.2/1.4)	
	RGB6 (digital)	12G SDI	
	Audio1	0	
Output Terminals	Monitor Out		
	Audio Out	0	
	3D Sync Line		
External Control		RS-232, IR, Wired Remote, HDBaseT, DDC/CI, RJ-45, USB (USB 2.0)	
Sync Compatibility		Separate Sync / Composite Sync / Sync on G	
Power Requirements		100-240V AC, 50/60 Hz	
Input Current		10.0A - 5.0A	
Power Consumption		1000W / 900W / 3.0W / 0.5W	
(ECO off/ECO Mode/Standby/Standby-Power Saving)		100-240V AC, 50/60 Hz	
Installation Orientation		Floor/Front, Floor/Rear, Ceiling/Front, Ceiling/Rear	
Product Dimensions (WxDxH)		19.7 x 23.9 x 8.5 in. / 500 x 606 x 216 mm	
Net Weight		84.9 lbs. / 38.5 kg	
Shipping Dimensions (WxDxH)		30.9 x 27.5 x 17.5 in. / 784 x 699 x 445 mm	
Gross Weight		84.9 lbs. / 38.5 kg	
Fan Noise		37 dB normal / 35 dB silent mode	
Regulations	US	USA UL60950-1: 2nd edition, UL 62368-1, 3rd Edition, FCC Part15 Subpart B(ANSI C63.4:2014)	
	Canada	CAN/CSA C22.2 No.62368-1-19, 3rd Edition, ICES-003 Issue 7(ANSI C63.4-2014)	
Operating	Temperature	32-113°F / 0-45°C	
	Humidity	20 to 85% Humidity (Non-Condensing)	
Storage	Temperature	14-140°F / -10-60°C	
	Humidity	20% - 80% (non-condensing)	
Ordering Model Number		XP-X141Q-B, XP-X141Q-W	

