

SHARP

PH3501QL

Professional Installation Projector



4K UHD
READY

laser
light source

Powerful 3-chip 1.38" DLP installation projector with the latest RB laser light source supports new, demanding projection

Laser Light Module

- 20,000-plus hours of virtually maintenance-free operation
- High-brightness, lower power consumption enhances applications such as retail, digital signage and theme parks
- Ability to control brightness creating a stable image over longer time periods

Integrated and Powerful

- Project uncompressed FHD video with integrated HDBaseT
- High performance video processing/scaling creates life-like images
- Integrated software applications such as DisplayNote®, Crestron Roomview, AMX Beacon and PJ Link allow for complete interactivity and control

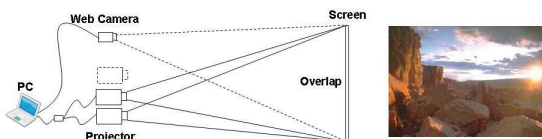
Flexible

- Enjoy greater installation flexibility with powered optional bayonet style lenses providing quick and easy exchanges. Lens throw distances range from 7.3 to 823.8 ft
- Tilt-free installation capabilities make these projector ideal for almost any install environment, including portrait orientation
- +/- 0.5% vertical lens shift and +/- 0.17% horizontal lens shift capabilities make alignment easy



Stacking correction

The industry's first built-in stacking correction capabilities (up to two projectors) allows the projectors to boost an image's brightness up to 80,000 lumens, which is ideal for larger-sized screens and environments with heavy ambient light. This feature also prevents the complete loss of an image, which can happen when using only one projector.



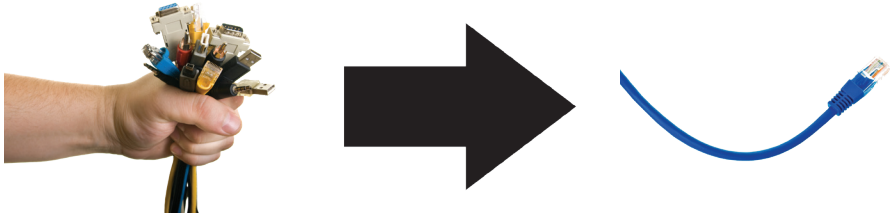
Edge blending

This function seamlessly blends multiple projected images to display a single high-resolution image.



Built-In HDBaseT Support

Simplify your installations with HDBaseT. Optimized for video applications and supporting uncompressed full HD digital video, audio, ethernet, power and various control signals. With only a single cable (up to 100m) to run, infrastructure and labor costs are reduced, installations are significantly easier, and there is no cable clutter to manage. With uncompressed HD video support, images have never been more stunning. What's more, control signals are contained in the same cable.

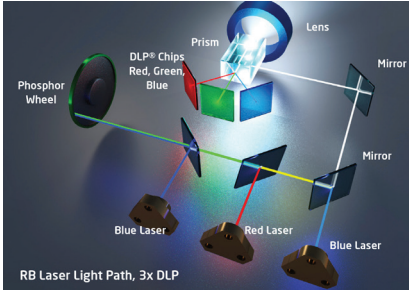


Get Connected with a Wide Selection of Inputs

- Dual computer inputs ensure quick switching between presentations

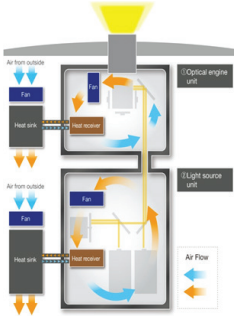
Laser Light Module

- 20,000-plus hours of virtually maintenance-free operation
- High-brightness, lower power consumption enhances applications such as retail, digital signage and theme parks
- Ability to control brightness creating a stable image over longer time periods
- Images appear immediately after power on due to instantaneous start up of the laser



Super Dust Protection

Sharp's patented heat exchanger and the completely sealed optical engine offer continuously best performance in harsh Rental/ Staging environment.



ADVANCED SOFTWARE FEATURES

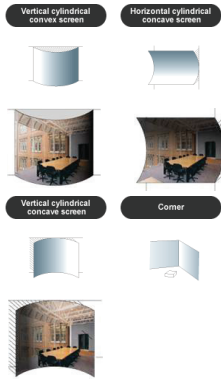
Cornerstone

Enhanced keystone correction allows for horizontal, vertical and diagonal image correction for aligned images even when the projector is set up at an angle to the screen.



Geometric Correction

Projecting an image isn't confined to a standard flat screen or wall with the Sharp PH3501QL. Geometric correction allows these models to project an image on spheres, cylinders, corner angles and many more non-standard surfaces.



Unique Features

3D Reform™ allows you to square the image by adjusting horizontally, vertically or diagonally when the projector cannot be placed parallel or perpendicular to the screen

Advanced AccuBlend™ ensures detailed images when non-native resolution sources are connected to the projector

AutoSense™ automatically syncs with any computer signal and features one-touch image optimization

64-step image magnification with location control

Discreet source keys for source selection

Remote diagnostics enable the user to monitor and make adjustments to the projector remotely

Built-in HTTP page for control and monitoring over a LAN network. Email notification of error messages or lamp end-of-life can be sent to remote locations.

Warranty

Registered owners receive a five (5) years or 20,000 hours (whichever comes first) parts and labor warranty

In the Box

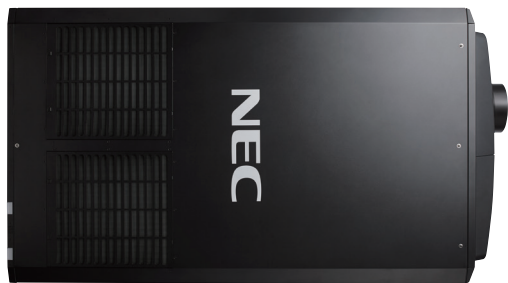
Remote control, batteries, power cord, user's manual on CD-ROM, quick start guide, Lens Hole Cap, warranty Sheet, Security Sticker, Service Door Key

Accessories

- RMT-PJ35 Replacement remote control
- NP01PW1 Power cable
- RGBCBL-PJPX RGB cable
- Optional Lenses L2K-10F1, L4K-11ZM, L4K-15ZM, L4K-20ZM, L2K-30ZM, L2K-43ZM1, L2K-55ZM1
- SB-01HC HD/SS-SDI input card
- SB-04HC 3G/HD/SD-SDI input Card

Ordering Models Numbers

NP-PH3501QL



		PH3501QL	
Display Technology		1.38" DC4K DMD chip	
Light Output (lumens)		40,000 Center Lumens, 35,000 ANSI	
Resolution	Native	4K 4096 x 2160	
	Maximum	4K 4096 x 2160	
Contrast Ratio (up to)		30,000:1 with Dynamic Contrast	
Laser Life (up to)		20,000 hours	
Screen Size (diagonal)		50 to 500 in. / 1.27 to 12.7m	
Throw Ratio	L2K-10F1	0.93	
	L4K-11ZM	1.24 - 1.73	
	L4K-15ZM	1.52 - 2.10	
	L4K-20ZM	1.98 - 3.34	
	L2K-30ZM	2.71 - 3.92	
	L2K-43ZM1	3.91 - 5.52	
L2K-55ZM1		5.00 - 7.80	
Projection Distance		2.5 to 68.5 ft. / 0.74 to 20.9m	
Projection Angle		10.3 to 10.8° tele / 13.7 to 14.5° wide	
Lens	Zoom		Powered
	Zoom Ratio	L2K-10F1	Fixed
		L4K-11ZM	1.4:1
		L4K-15ZM	1.4:1
		L4K-20ZM	1.7:1
		L2K-30ZM	1.4:1
		L2K-43ZM1	1.4:1
	L2K-55ZM1	1.6:1	
	Focus		Powered
	L2K-10F1	F=2.5, f= 28.95mm, 15.0lbs. / 6.8kg	
	L4K-11ZM	Power zoom / Power focus, F=2.5, f= 38.5 to 53.7mm, 19.0lbs. / 8.6kg	
	L4K-15ZM	Power zoom / Power focus, F=2.5, f= 47.5 to 65.6mm, 17.0lbs. / 7.7kg	
	L4K-20ZM	Power zoom / Power focus, F=2.5, f= 61.4 to 105.2mm, 19.6lbs. / 8.9kg	
	L2K-30ZM	Power zoom / Power focus, F=2.5, f= 85.0 to 121.6mm, 15.4lbs. / 7.0kg	
	L2K-43ZM1	Power zoom / Power focus, F=2.5, f= 122.8 to 172.3mm, 15.7lbs. / 7.1kg	
L2K-55ZM1	Power zoom / Power focus, F=2.5, f= 156.5 to 243.1mm, 16.8lbs. / 7.6kg		
Shift	L2K-10F1	Powered +/-0.27 Vertical, +/-0.08 Horizontal	
	L2K-30ZM		
	L2K-43ZM1		
	L4K-11ZM	Powered +/-0.17 Vertical, +/-0.50 Horizontal	
	L4K-15ZM		
L4K-20ZM			
L2K-55ZM1	Powered +/-0.31 Vertical, +/-0.10 Horizontal		
Shutter		Laser Shutter	
Keystone Correction		+/- 40° horizontal, +/- 40° vertical	
Synchronization Range	Horizontal	Analog: 15-100kHz, Digital: 24-153kHz	
	Vertical	Analog: 48-120Hz, Digital: 24-120Hz	
	Refresh Rate for 4K Signal	23.98, 34, 25, 29.97, 30, 50, 59.94, 60Hz	
Supported Video Standards		NTSC, NTSC4.43, PAL, PAL-60, PAL-M, PAL-N, SECAM	
SD/HD Video Signal Compatibility		4K, 1080p, 1080i, 720p, 576p, 576i, 480p, 480i	
PC Signal Compatibility		VGA, SVGA, XGA, SXGA, SXGA+, UXGA, WUXGA	
Macintosh Compatibility		Yes	
Input Terminals	RGB1 (digital)	HDMI (V2.0) w/ HDCP (V1.4/2.2) - 4096 x 2160 @ 60p, 12 bit 4:4:4	
	RGB2 (digital)	HDMI (V2.0) w/ HDCP (V1.4/2.2) - 4096 x 2160 @ 60p, 12 bit 4:4:4	
	RGB3 (digital)	DisplayPort w/ HDCP (V1.4) - 4096 x 2160 @ 60p, 12 bit 4:4:4	
	RGB4 (digital)	DisplayPort w/ HDCP (V1.4) - 4096 x 2160 @ 60p, 12 bit 4:4:4	
	RGB5 (digital)	HDBaseT w/ HDCP (V1.4/2.2) - 4096 x 2160 @ 60p, 8 bit 4:2:0	
	RGB6 (digital)	Quad 3G-SDI	
Option Slot		OPS	
Output Terminals		3D Sync Line	
External Control		RS-232, IR, HDBaseT, DDC/CI, RJ-45, USB (USB 2.0), Stereo Mini	
Sync Compatibility		Separate Sync / Composite Sync / Sync on G	
Power Requirements		220 - 240V AC, 50/60Hz Single Phase	
Input Current		30A	
Power Consumption	(ECO off/Standby)	4705W / 205W	
	Installation Orientation	Floor/Front, Floor/Rear, Ceiling/Front, Ceiling/Rear	
	Dimensions (WxHxD)	27.4 x 17.9 x 46.5 in. / 697 x 455 x 1180 mm	
	Net Weight	372.6lbs. / 169 kg	
	Fan Noise	55dB	
Regulations	U.S.	UL60950-1 (2nd)/ FCC Part15 Class A (Marking: UL)	
	Canada	CSA60950-1 / ICES-003 Class A (Marking: CAN ICES-38(A)/NMB-38(A))	
	Latin America	EN60950-1/EN55022 Class A, EN55032 Class A, EN55024, EN61000-3-2/-3-3/-3-11/-3-12 (Marking CE)	
Laser Safety	USA	IEC60825-1 Edition3 2014 : Class1, IEC62471 2006 : RG3, FDA(21 CFR 1040.10 and 1040.11)	
	Others	IEC60825-1 Edition3 2014 : Class1, IEC62471 2006 : RG3	
Operating Temperature		32° - 104°F 0° - 40°C	
Humidity		20-80% non-condensing	
Storage		14° - 122°F / -10° - 50°C	

* Lens does not ship with the projector. Additional accessories are available, including screens, carts, mount accessories and replacement cables. Visit www.sharpprojectors.com for details.

HDMI, the HDMI Logo and High-Definition Multimedia Interface are trademarks or registered trademarks of HDMI Licensing LLC. All other brand or product names are trademarks or registered trademarks of their respective holders. Product specifications subject to change.

