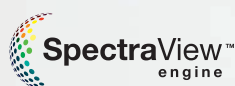


Orchestrating a brighter world

NEC

NEC MultiSync® P243W

sRGB gamut color accurate desktop display



Trusted color accuracy

The 24" MultiSync P243W delivers in applications where accurate color and grayscale performance is essential. The W-LED backlight provides 99.8% coverage of the sRGB color space, perfect for graphics design and desktop publishing. Utilizing a high performance IPS LCD panel and backed by a 4 year warranty with 48-hour Advanced Exchange, the MultiSync P243W delivers high quality, accurate images simply and beautifully.

Impeccable Image Performance

The W-LED backlight combined with NEC's exclusive 3rd Generation SpectraView Color Engine deliver accurate color in every environment.

- 1920x1200 resolution in a 16:10 aspect ratio delivers a large workspace at a manageable size
- Up to 99.8% coverage of the sRGB color space 10-bit HDMI and DisplayPort inputs display up to 1.07 billion colors out of a palette of 4.3 trillion colors

Excellent Color Management

The 3rd Generation SpectraView Color Engine provides extensive, intuitive and automatic control over color settings.

- MultiProfiler software and on-screen controls provide access to thousands of color gamut, gamma, white point, brightness and contrast combinations
- Internal 14-bit 3D lookup tables (LUTs) work with optional SpectraView_{ii} color calibration solution for unparalleled color accuracy

A Perfect Fit for Your Workspace

Future-proof connectivity, great ergonomics, and VESA mount cabinets to fit every desk and office environment.

- 10-bit DisplayPort and HDMI as well as DVI-D and VGA inputs connect to most computers
- Four-way ergonomic stand includes pivot, swivel, tilt and height-adjustment up to 150mm
- VESA-standard mounting holes for multi-display setups



A Better Workflow

Exclusive, innovative features can eliminate steps in a color editing workflow, saving time and hassle.

- 5 completely customizable picture modes provide shortcuts to commonly used graphics settings
- MultiProfiler can load ICC color profiles into any of the presets and also provides keyboard shortcuts for common functions
- 2 up / 3 down USB 3.1 hub with DisplaySync Pro controls two computers with one keyboard and mouse

Color Accurate Editing

The Essential

Designed for color accuracy in graphics design and desktop publishing applications, the MultiSync P243W utilizes the SpectraView Color Engine to accurately emulate several color spaces, including sRGB, Rec 709 and DCI-P3

The Extras

Using MultiProfiler, the presets in the P243W can be set to emulate most other color spaces simply by loading an ICC profile from a printer, display or projector, allowing you to quickly switch between multiple color spaces while editing. In addition, you can display the same image in two different picture modes simultaneously on screen, allowing for a quick preview of a second color space and saving time switching between color spaces in editing software.



Multiple Computer Environments

The Essential

With plenty of connectivity options, including DisplayPort, DVI-D, HDMI and VGA connections, the MultiSync P243W can connect most modern computer systems.

The Extras

Each P243W features a USB 3.1 hub with two upstream connections and three downstream connections. This allows you to connect two different computers using the USB port and share a keyboard, mouse and a third device between the two computers with the push of a button. Since the internal LUTs store the calibration data in the display, every input is a calibrated input.



Color Accurate Professional Desktop

Color Space Emulation

The Essential

Built-in presets for standard color spaces, including sRGB, DCI-P3, Rec 709 and even the DICOM medical imaging standard provide quick access to previewing your work in a specific color space.

The Extras

MultiProfiler software gives you direct control over your display's built-in preset so that you can have multiple custom color space emulations simultaneously on the display. Color gamut, white point, gamma and brightness are controllable for each preset and ICC color profiles for printers or displays can also be loaded into the presets for a more perfect color match.



Picture in Picture / Picture by Picture

The Essential

Picture in Picture and Picture by Picture configurations allow multiple inputs to be shown on screen simultaneously in order to improve productivity.

The Extras

The P243W allows for two different inputs to be shown simultaneously, which is useful for multiple computer configurations or even replacing multiple display setups. The same input can also be displayed in a second color space, which is most often used for a quick preview of an output color space (for example, sRGB) while working in a different color space (for example, Adobe RGB). This saves the time used to switch back and forth between color spaces as final editing tweaks are made.



Picture by Picture
shown with the same input,
multiple color spaces



Picture in Picture
shown with 2 separate inputs

10 bit Color

The Essential

10 bit color or "deep color" provides an extra 2 bits of color data accessible through the display, extending the typical display's 16.7 million colors to over 1 trillion colors. This improves gradients and reduces image banding.

The Extras

The MultiSync P243W offers 10 bit color support over DisplayPort and HDMI inputs for increased color fidelity when matched with a 10 bit operating system and software applications.



10 bit color eliminates banding



8 bit color shows banding

SpectraView_{II}™ Color Calibration Option

The Essential

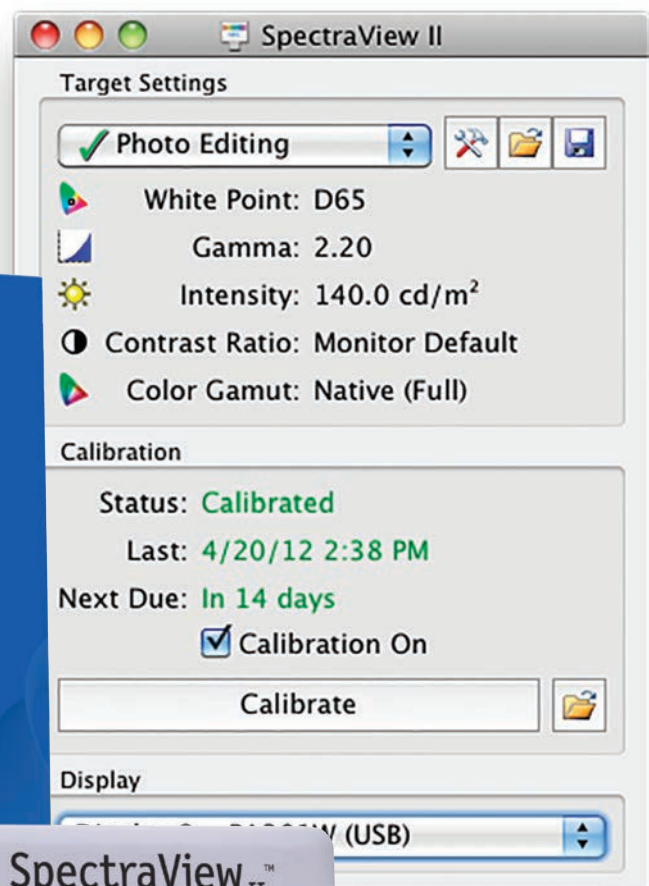
Available as an option for the P243W, the SpectraView_{II} color calibration solution uses an external color sensor to ensure the consistency and accuracy of the colors onscreen. SpectraView_{II} is the only software that calibrates the lookup tables (LUTs) in an NEC display, eliminating a loss of color caused by video card LUT calibration.

The Extras

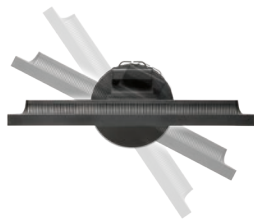
The SpectraView_{II} solution is simple, quick and reliable. Custom calibration targets allow you to calibrate to thousands of calibration combinations and the calibration validation functionality provides you with everything you need to trust the calibration results. In addition, SpectraView_{II} includes lifetime upgrades and can be used for your future NEC displays.

SpectraView_{II}™

Display Color Calibration System



DISPLAY	Viewable Image Size	24.1" IPS LCD
	Aspect Ratio	16:10
	Native Resolution	1920x1200
	Pixel Pitch	0.27mm
	Pixels Per Inch	93 @ native resolution
	Brightness (typical)	350 cd/m ²
	Response Time (typical)	8 ms
	Color Gamut* Adobe RGB Coverage/Size** NTSC Coverage/Size sRGB / Rec 709 Coverage/Size DCI-P3 Coverage / Size	77.0% / 79.3% 73.1% / 75.7% 99.8% / 106.9% 78.8% / 78.8%
	Displayable Colors	1.07 billion out of 4.3 trillion (10-bit DisplayPort or HDMI input); 16.7 million colors out of 4.3 trillion color palette (8-bit DisplayPort, HDMI or DVI-D)
	Input Connectors	DisplayPort, HDMI, DVI-D, VGA
POWER CONSUMPTION	On (typical)	25W
	Power Savings Mode (ADVANCED)	<0.2W
PHYSICAL SPECIFICATIONS	Dimensions (WxHxD)	
	Net (with stand)	21.9 x 14.9-20.8 x 9.2 in. / 556.2 x 379.1-529.1 x 233.0 mm
	Net (without stand)	21.9 x 14.2 x 2.3 in. / 556.2 x 361.8 x 58.6 mm
	Weight	
	Net (with stand)	18.1 lbs. / 8.2 kg
	Net (without stand)	11.9 lbs. / 5.4 kg
	VESA Hole Configuration	100 x 100mm
ENVIRONMENTAL CONDITIONS	Operating Temperature	41-95°F / 5-35°C
	Operating Humidity	20 - 80%
	Operating Altitude	16,404 ft. / 5000m
	Storage Temperature	14-140°F / -10-60°C
	Storage Humidity	10-85%
	Storage Altitude	40,000 ft. / 12,192m
	Tropical Environments	Yes
ADDITIONAL FEATURES	USB 3.1 hub (2 up/3 down) with DisplaySync Pro, 5 Picture Modes, Picture in Picture, 2 way Picture by Picture, ICC Profile Emulation, Color Vision Emulation, 14-bit 3D gamma lookup table (LUT), DICOM, REC 709, DCI-P3, Digital Uniformity Correction, black level adjustment, ambient light sensor, 150mm height-adjustable and quick release stand with locking base and cable management as well as tilt, swivel and pivot, MultiProfiler software, CableComp, integrated 2x1W speakers, Kensington security slot	
OPTIONAL ACCESSORIES	SpectraView ₊ Color Calibration Kit (SVII-PRO-KIT); Color calibration sensor (MDSVSENSOR3); SpectraView software (SVIISOFT); Hood (HD2PA2427)	
SHIPS WITH	Power cord; DisplayPort cable; Mini DisplayPort to DisplayPort cable; USB 3.0 A to B cable; Mounting screws; CD-ROM with manual and MultiProfiler	



* Color gamut size and coverage calculated as 2-D gamut area in CIE 1931 xy colorspace. Size is the total relative display gamut area and includes any colors outside the reference gamut. Coverage is the relative display gamut area contained inside the reference gamut. NTSC values provided for comparison purposes - modern broadcast video uses SMPTE-C, ITU-R BT, 709-5/sRGB or EBU primaries.

** AdobeRGB is a standard defined by Adobe Systems Incorporated.

MultiSync is a registered trademark, and Ambilight, SpectraViewII and XtraView+ are trademarks of NEC Display Solutions. The terms HDMI and HDMI High-Definition Multimedia Interface, and the HDMI Logo are trademarks or registered trademarks of HDMI Licensing LLC in the United States and other countries. All other brand or product names are trademarks or registered trademarks of their respective holders. Product specifications subject to change.