

NEC Portable Projectors VT Series



easy to learn.

VT47, VT470, VT575, VT670 and VT676

The portable projectors that work for you.

Ahead of the learning curve so you don't have to be.

- **Connectivity.** Color-coded and well organized with connections for every source.
- **Remote control.** Adjust volume and select sources with the touch of a button. Control PC functions from across the room with the IR receiver (VT470/VT670/VT676).
- **Keypad.** One touch source changes and complete menu control using the intuitive projector keypad.
- **Design.** The attractive and inviting design of the new VT series projectors will grab attention before your presentation even begins.

easy to use.

How does a projector work for you? Like this:

- **Quick start up.** Warms up and projects in seconds.
- **Automatic keystone correction.** Instantly project a square image even when the projector is set up at a steep offset angle to the screen.
- **Plenty of get-up and go.** AutoSense™ automatically syncs the projector with any computer signal and features one-touch image optimization.
- **Great picture quality.** The VT Series projectors come supplied with native resolutions up to XGA and 2500 lumens. Patented NEC technologies like AccuBlend and VORTEX™ Technology enhance already impressive image quality.
- **Monitor output.** Easily connect an external monitor for use with a desktop computer.
- **Quiet operation.** Nearly silent operation.

easy to own.

Save money, resources and your projector.

- **Affordable.** VT Series projectors start under \$900
- **Eco Mode.** Extends lamp life and makes a low operating cost even lower.
- **Security features.** Enhanced multi-leveled security features protect your investment by deterring theft.
- **Lamp protection.** Internal sensors prevent lamp from being turned on before completely cooled.
- **Award-winning service.** Service programs like EcoCareSM and InstaCare[®] ensure peace of mind.

Empowered by Innovation

NEC

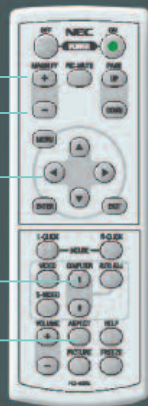
The VT Series Portable Projectors are easy for everyone.

intuitive design.

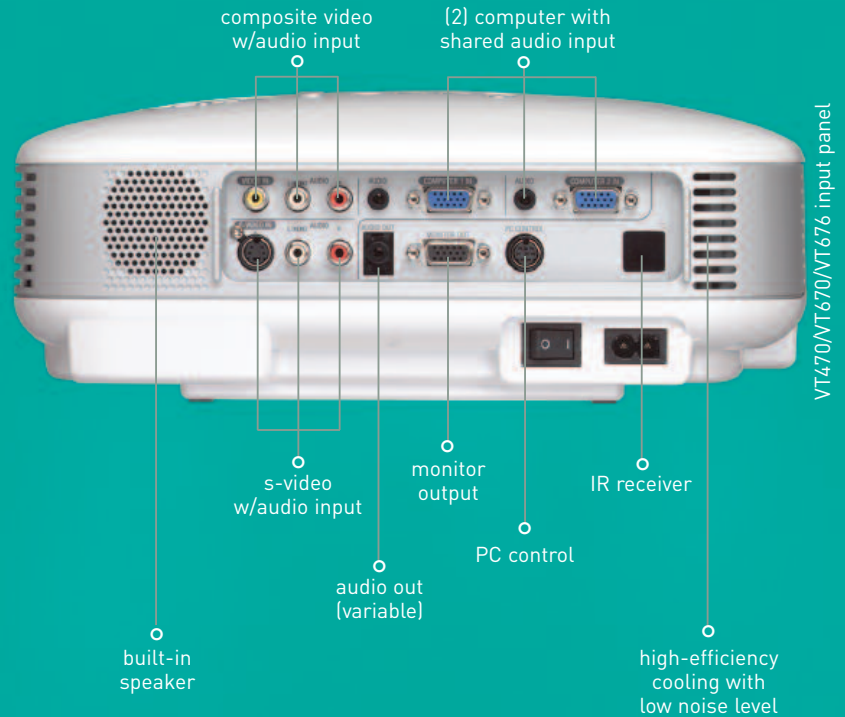
Form and function. Beauty and brains. Call it what you will, the VT Series projectors have it.

- **Flexible connections.** Use a variety of inputs including component video and HDTV.
- **Short focal lens.** Project a large image with the projector set a short distance from the screen.
- **Variable audio output.** Control self-powered external speaker volume with the projector remote.
- **Quiet operation.** Nearly silent at 28dB in Eco-Mode.

- image magnification
- mouse control
- direct access to inputs
- aspect ratio control



VT470/VT670/VT676 remote



VT470/VT670/VT676 input panel

NEC

Product/Services/Accessories

Order Code	Description
VT47	SVGA, 1500 ANSI lumen projector
VT470	SVGA, 2000 ANSI lumen projector
VT575	XGA, 1500 ANSI lumen projector
VT670	XGA, 2100 ANSI lumen projector
VT676	XGA, 2500 ANSI lumen projector
PWRCRD-VT70	Power cable
RMT-PJ04	Remote for VT47/VT570
RMT-PJ05	Remote with PC control
IR-RCVR	IR Receiver for PC control (works with RMT-PJ05)
TRAVELPRO200	Simulated leather rolling case with extension handle
VT65ATAPRO	Rugged shipping case for projector
VT65ROLLER	Platinum, high impact plastic rolling case for projector. Stores in airplane overhead.
ADP-CV1	Component video adapter
VT70CM	Ceiling mount for projector
VT75LP	Lamp for VT470, VT670 and VT676
VT70LP	Lamp for VT47 and VT575
LTSSCREEN	50" diag. table top screen in compact carrying case
SC200	Security cable locks projector to table or cart
In-Box Materials	Projector, lens cap, power cord, RGB signal cable, user's manual on CD-ROM, carrying case, remote control, battery, quick start guide, product registration card, [VT470/VT670/VT676 remote mouse receiver]
Warranty	Registered owners receive a 2-year limited, parts and labor warranty. The first year is covered by InstaCare. InstaCare provides the original owner either limited 3 business day repair/return or next business day exchange. The lamp when used under normal operating conditions is covered for 500 hours or 3 months, whichever comes first.

Complex technology keeps operation simple.

NEC is a leader in developing unique technologies that improve color and clarity in a projected image.

advanced technologies.

Automatic keystone correction – ensures an instantly square image is projected even when the projector is set up at a steep offset angle to the screen.

Advanced AccuBlend™ – ensures detailed images when non-native resolution sources are connected to the projector.

Autosense™ – automatically syncs with any computer signal and features one touch image optimization.

VORTEX™ Technology – breakthrough image processing technology improves white level, color accuracy, dynamic range and varying levels of black in an image.



Automatic Keystone Correction

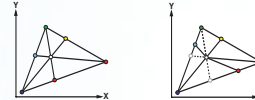


Compressed Image

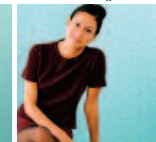


Advanced AccuBlend Correction

VORTEX color adjustments

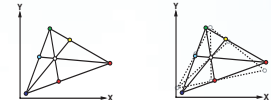


original image



after VORTEX Technology Plus color adjustment

VORTEX white balance



original image



after VORTEX Technology Plus white balance correction



Powerful Presentation Projectors

Model #	VT47	VT470	VT575	VT670	VT675
Panel Resolution	SVGA 800x600	SVGA 800x600	XGA 1024x768	XGA 1024x768	XGA 1024x768
Brightness (ANSI lumens)	1500 Standard 1200 Eco-Mode	2000 Standard 1600 Eco-Mode	1300 Standard 1040 Eco-Mode	2100 Standard 1680 Eco-Mode	2500 Standard 2000 Eco-Mode
Lamp life	3000 hours Eco-Mode, 2000 hours normal mode				
Image Size (diagonal)	25-300 inches	21-300 inches	21-300 inches	21-300 inches	21-300 inches
Computer inputs	1	2	2	2	2
Remote w/PC control	optional	yes	optional	yes	yes
Fan Noise	32/28 dB	35/30 dB	32/28 dB	35/30 dB	35/30 dB
Inputs	1 RGB, 1 S-Video 1 Video, 1 L/R RCA Audio, 1 Stereo Mini Audio, 1 PC Control	2 RGB [D-Sub 15-pin], 1 S-Video [DIN 4-Pin], 1 Video (RCA), 2 L/R RCA Audio, 1 Stereo Mini Audio, 1 PC Control [DIN 8-Pin]			
Outputs	1 RGB	1 RGB, 1 Stereo Mini Audio (variable audio output)			
Dimensions	11.6(W) x 3.7(H) x 10.2(D) inches; 294(W) x 93(H) x 260(D) mm				
Net Weight	6.4 lbs / 2.9 kg				

NEC's full line of projectors and plasmas display crystal clear images every time.

- **Broadest line of product.** NEC offers over 20 large screen displays to support any application.
- **Crystal clear images.** All NEC displays show crystal clear images every time. Research says that NEC projectors and plasmas are known to display the best images and NEC has earned numerous awards and accolades for image quality and performance.
- **Works every time.** NEC displays are rock solid. A recent market study* from TFC Info showed NEC projectors and plasmas are known to have among the highest quality in the industry.
- **All NEC projectors and plasmas** are backed by industry leading service and support programs. NEC is a leader in product quality/reliability, after-sales support and return/repair programs as reported in the 2003 Pacific Media Reseller's Survey*.

* Pacific Media Associates and TFC Info are high-tech market research firms that specialize in providing information on large-screen display products, markets, and manufacturers.

NEC



cobranding area

The name you trust. The reliability you deserve. NEC is a global 100 company founded in 1899 with over \$40 billion in revenue and 130,000 employees. NEC is also the world's #3 patent holder with over 70,000 patents worldwide.

For more information, call 800.632.4636 or visit www.necvisualsystems.com

NEC is a registered trademark of NEC Corporation. All other trademarks are the property of their respective owners. All specifications and programs are subject to change without notice. ©2004 NEC Solutions (America) Inc.

NEC Solutions (America), Inc.
Visual Systems Division
1250 Arlington Heights Rd., Suite 400
Itasca, IL 60143-1248