

LCD clinical displays ideal for color and grayscale
medical review and referral applications

NEC MultiSync® MD Series



MultiSync MD Series Clinical Displays

Designed exclusively for the demanding needs of radiology, medical imaging and PACS environments, the NEC MultiSync MD Series clinical displays embody the precision, high performance and intelligence you'd expect from a trusted leader in display technology. The series includes 2.3, 4 and 8 Megapixel (MP) mid-brightness color displays, and 3MP and 5MP grayscale displays.

Model	Size	Type
MDC212C2	21.3"	2MP Color
MD242C2	24"	2.3MP Color
MD302C4	29.8"	4MP Color
MD322C8	31.5"	8MP Color



Highlights

- Outstanding image quality for both color and grayscale images due to NEC's LCD technologies that offer high brightness without compromising contrast or viewing
- Most color models feature an integrated, tri-stimulus (three-color) front sensor is more accurate and stable than standard luminance sensors
- Included lookup tables (LUTs) as large as 14-bit offer more finely detailed and accurate display of even the most delicate shadings and color differences
- All select models feature quick startup and a human presence sensor to save energy when not in use
- FDA 510(k) cleared for use in digital radiology applications*

* except MDC212C2

MultiSync MD Series Features

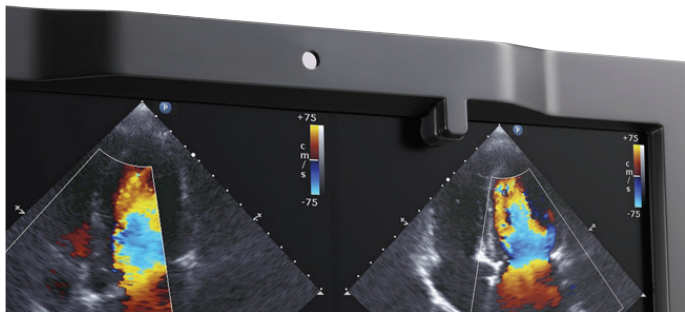
Factory DICOM Calibration

Every MultiSync MD Series display includes a lookup table (LUT) and is individually calibrated at the production factory to the DICOM grayscale display function for luminance. This calibration is held stable by sensors in the display for accurate out of the box viewing.



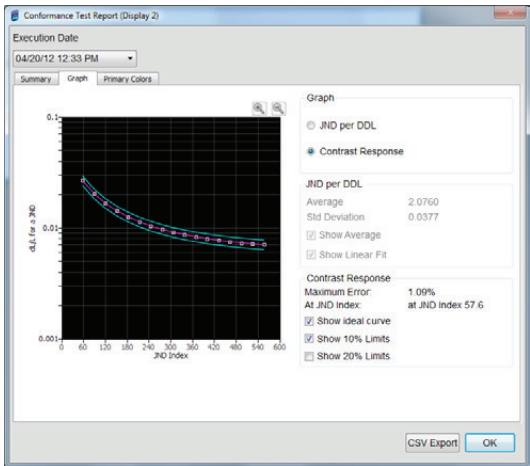
Front Sensor*

The built-in front sensor constantly monitors and maintains brightness for optimal DICOM GSDF calibration and consistent image quality. The front sensor is capable of measuring monitor brightness, white-point and contrast response, allowing it to be used for scheduled conformance, calibration and reporting functions.



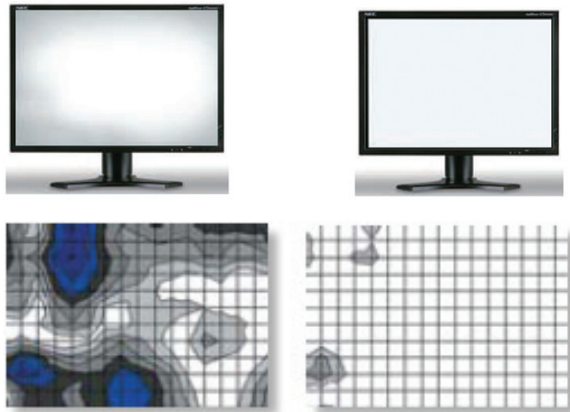
GammaCompMD™ QA software

This software is included with each display and ensures consistent image quality, including conformance to the DICOM standard, while providing an easy-to-use QA environment for medical imaging. The optional GammaCompMD QA Server provides computer networks with centralized control and management of multiple display systems.



ColorComp™ Digital Uniformity Control

By nature, LCD panels contain uniformity errors, which are visible as slightly brighter or darker areas on the screen. To combat this inherent trait, each MD Series display is individually characterized during production and digital uniformity correction is applied. This technology, called ColorComp, applies a digital correction to each pixel on the screen to compensate for differences in color and luminance and reduces the non-uniformity to virtually unnoticeable levels.



* not available on MD322C8

MODEL	MDC212C2	MD242C2	MD302C4	MD322C8	
DISPLAY	Viewable Image Size	21"	24"	29.8"	31.5"
	Native Resolution	1600 x 1200	1920 x 1200	2560 x 1600	3840 x 2160
	Pixel Pitch	0.27mm	0.27mm	0.251mm	0.18mm
	Pixels Per Inch	94@ native resolution	93@ native resolution	101 @ native resolution	140@ native resolution
	Brightness (typical)	180 cd/m ² calibrated / 440 cd/m ² max	180 cd/m ² calibrated / 350 cd/m ² max	180 cd/m ² calibrated / 340 cd/m ² max.	180 cd/m ² calibrated / 350 cd/m ² max
	Response Time (typical)	8ms	8ms	7ms	10ms
	Lookup Table (LUT)	14-bit (3D)	14-bit (3D)	14-bit (3D)	14-bit (3D)
	Displayable Colors	1.07 billion colors out of 4.3 trillion or 1024 shades of gray out of 4096 (10-bit DisplayPort input); 16.7 million colors out of 1.05 billion color palette or 256 shades of gray out of 4096 (DVI-D input)			
	Input Connectors	DisplayPort, DVI-D, D-sub	DisplayPort, DVI-D, HDMI, D-sub	DisplayPort, Mini DisplayPort, DVI-D, HDMI	DisplayPort, DisplayPort OPS, 2x HDMI, 2x HDMI / 2x DVI-D Dual Link, USB 3.0 hub (2 up/ 3 down) with DisplaySync Pro
POWER CONSUMPTION	On (typical)	54W	29.5W	87W	95W
	Power Savings Mode (ADVANCED)	0.3W	0.2W	1.9W	4.6W
PHYSICAL SPECIFICATIONS	Dimensions (WxHxD)				
	Net (with stand)	466.4 x 374.6 - 524.6 x 227.6 / 18.4 x 14.7 - 20.7 x 9.0 in	21.9 x 14.9-20.8 x 9 in. / 556.3 x 378.5-528.3 x 228.6mm	27.1 x 18.4-24.3 x 11.9 in. / 688 x 466.4-616.4 x 301.6 mm	29.3 x 18.4 x 11.9 in. / 745 x 469 x 302 mm
	Net (without stand)	466.4 x 359.0 x 68.9 / 18.4 x 14.1 x 2.7 in.	21.9 x 14.3 x 3.3 in. / 556.3 x 363.2 x 83.8mm	27.1 x 17.6 x 3.2+0.2 in. / 688 x 446.8 x 82+4.8 mm	29.3 x 17.4 x 3.9 in. / 744.8 x 440.8 x 100.0 mm
	Weight				
	Net (with stand)	17.6 lbs. / 8.0 kg	22.5 lbs. / 10.2 kg	37.5 lbs. / 17.0 kg	45.2 lbs. / 20.5 kg
	Net (without stand)	466.4 x 359.0 x 68.9 / 18.4 x 14.1 x 2.7 in.	21.9 x 14.3 x 3.3 in. / 556.3 x 363.2 x 83.8mm	27.1 x 17.6 x 3.2+0.2 in. / 688 x 446.8 x 82+4.8 mm	29.3 x 17.4 x 3.9 in. / 744.8 x 440.8 x 100.0 mm
	VESA Hole Configuration	100 x 100 mm, 200 x 100 mm			
ENVIRONMENTAL CONDITIONS	Operating Temperature	41-95°F / 5-35°C			
	Operating Humidity	20-80%			30-80%
	Operating Altitude	16,404 ft. / 5000m			
	Storage Temperature	14-140°F / -10-60°C	4-140°F / -20-60°C		14-140°F / -10-60°C
	Storage Humidity	10-85%			
	Storage Altitude	40,000 ft. / 12,192m			
LIMITED WARRANTY (parts & labor, including backlight)	5 years with Advanced Overnight Exchange (usage restrictions may apply)				
ADDITIONAL FEATURES	DICOM GSDF calibrated; Digital uniformity correction; USB hub; Quick QA feature (MDC212C2, MD242C2, MD302C4); GammaComp MD QA software; Analog/digital CableComp; Pivot; Tilt; Swivel; Height-adjustable stand, Self Scheduled Calibration (MDC212C2)				
OPTIONAL ACCESSORIES	(MDA-W4100); Color calibration sensor (MDSVSENSOR2); Standalone calibration sensor (MDSVSENSOR3); Traceable calibration sensor (CC-11PRO2), see http://necdisplay.com for supported video cards				
SHIPS WITH	Power cord; DVI cable (Dual Link for several models); Setup sheet; CD-ROM (GammaCompMD QA software); DisplayPort cable; USB cable				

MultiSync is a registered trademark, and ColorComp and GammaCompMD QA are trademarks of NEC Display Solutions. All other brand or product names are trademarks or registered trademarks of their respective holders. Product specifications subject to change.