

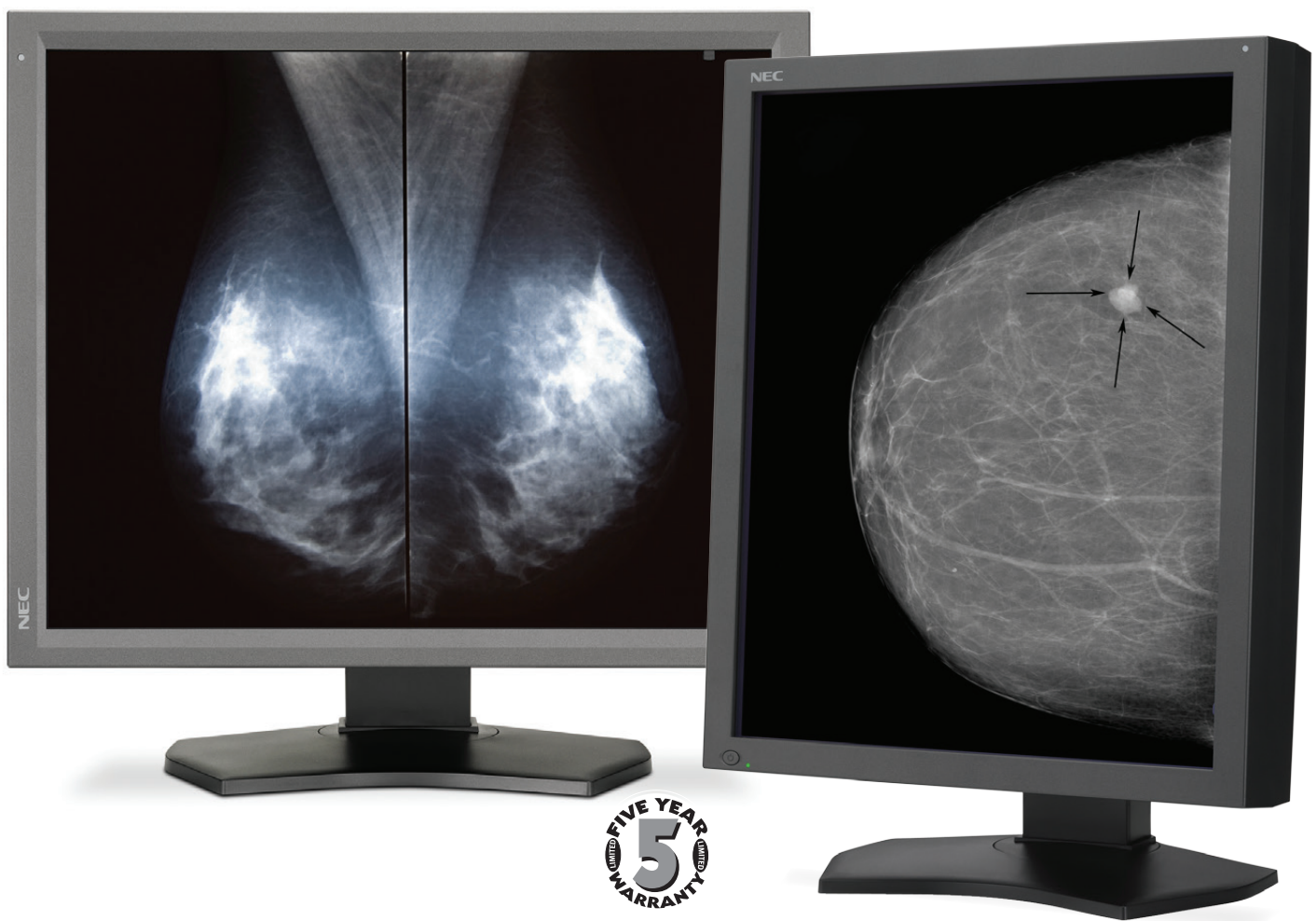
21.3" grayscale LED-backlit medical grade
LCD display for high resolution diagnostic imaging

NEC MultiSync® MD211G5



21" Grayscale 5-Megapixel Diagnostic Display for Mammography , FFDM and Tomosynthesis

The 21.3" NEC MultiSync MD211G5, an LED-backlit medical-grade widescreen diagnostic display, is designed for the demanding needs of healthcare professionals in medical imaging, mammography, full field digital mammography (FFDM) and tomosynthesis. This 5-megapixel model has an IPS panel to provide precise grayscale reproduction and wide viewing angles, as well as an integrated front sensor, which constantly monitors and adjusts brightness to maintain the factory DICOM GSDF calibration. The MD211G5 includes a four-way ergonomic stand, including height-adjust, swivel, tilt and pivot. The display offers both DisplayPort and DVI-D inputs, built-in two-port USB hub, and 13.5-bit lookup tables (LUTs) with 1024 levels of gray for smooth images and hardware calibration.



Highlights

- In-Plane Switching (IPS) LCD technology provides accurate grayscale reproduction and wide viewing angles
- High brightness (500 cd/m² calibrated) exceeds ACR recommendations for mammography
- Standard DisplayPort and DVI-D inputs ensure compatibility with off-the-shelf graphics cards
- FDA 510(k) cleared for radiology, mammography, FFDM and tomosynthesis

MultiSync MD Series Features

Factory DICOM Calibration

Every MultiSync MD Series display includes a lookup table (LUT) and is individually calibrated at the production factory to the DICOM grayscale display function for luminance. This calibration is held stable by sensors in the display for accurate out of the box viewing.



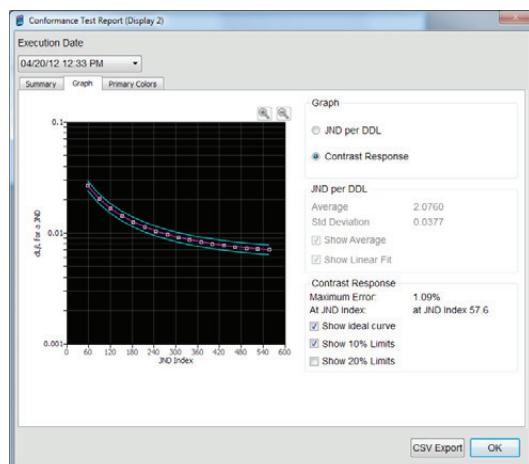
Front Sensor

The built-in front sensor constantly monitors and maintains brightness for optimal DICOM GSDF calibration and consistent image quality. The front sensor is capable of measuring monitor brightness and contrast response, allowing it to be used for scheduled conformance, calibration and reporting functions.



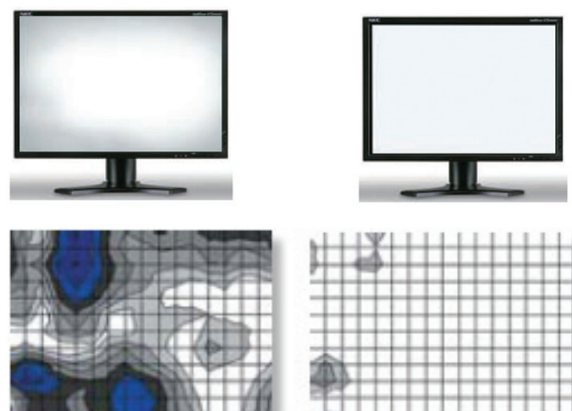
GammaCompMD™ QA software

This software is included with each display and ensures consistent image quality, including conformance to the DICOM standard, while providing an easy-to-use QA environment for medical imaging. The optional GammaCompMD QA Server provides computer networks with centralized control and management of multiple display systems.



ColorComp™ Digital Uniformity Control

By nature, LCD panels contain uniformity errors, which are visible as slightly brighter or darker areas on the screen. To combat this inherent trait, each MD Series display is individually characterized during production and digital uniformity correction is applied. This technology, called ColorComp, applies a digital correction to each pixel on the screen to compensate for differences in color and luminance and reduces the non-uniformity to virtually unnoticeable levels.



MODEL		MD211G5
DISPLAY	Viewable Image Size	21.3"
	Native Resolution	2048 x 2560
	Pixel Pitch	0.165mm
	Pixels Per Inch	154 @ native resolution
	Brightness (typical)	500 cd/m ² calibrated / 1200 cd/m ² max.
	Response Time (typical)	25ms (white to black)
	Lookup Table (LUT)	13.5-bit
	Displayable Colors	1024 levels of gray out of a palette of 12277
	Input Connectors	DVI-D, DisplayPort
POWER CONSUMPTION	On (typical)	80W
	Power Savings Mode (ADVANCED)	2W
PHYSICAL SPECIFICATIONS	Dimensions (WxHxD)	
	Net (with stand)	18.7 x 15.9-21.3 x 9 in. / 474.5 x 403.3-541.8 x 227.6mm
	Net (without stand)	18.7 x 15.4 x 3.9 in. / 474.5 x 390 x 98.2mm
	Weight	
	Net (with stand)	26 lbs. / 11.8 kg
	Net (without stand)	19 lbs. / 8.6 kg
	VESA Hole Configuration	100 x 100mm
ENVIRONMENTAL CONDITIONS	Operating Temperature	41-95°F / 5-35°C
	Operating Humidity	20-80%
	Operating Altitude	9842 ft. / 3000m
	Storage Temperature	-4-140°F / -20-60°C
	Storage Humidity	10-85%
	Storage Altitude	32,808 ft. / 10,000m
LIMITED WARRANTY (parts & labor, including backlight)	5 years, including Advanced Overnight Exchange	
ADDITIONAL FEATURES	DICOM GSDF calibrated; Digital Uniformity Correction; Two-port USB hub; Pivot; Tilt; Swivel; Height-adjustable stand	
OPTIONAL ACCESSORIES	Medical calibration sensor (MDSVSENSOR2); Medical calibration sensor (MDSVSENSOR3), see http://necdisplay.com for supported video cards	
SHIPS WITH	Power cord; DVI-D Dual Link cable; DisplayPort cable; Warranty sheet; Caution Sheet; USB Cable; Quick Reference Guide	

MultiSync is a registered trademark, and ColorComp and GammaCompMD QA are trademarks of NEC Display Solutions.
All other brand or product names are trademarks or registered trademarks of their respective holders.
Product specifications subject to change.