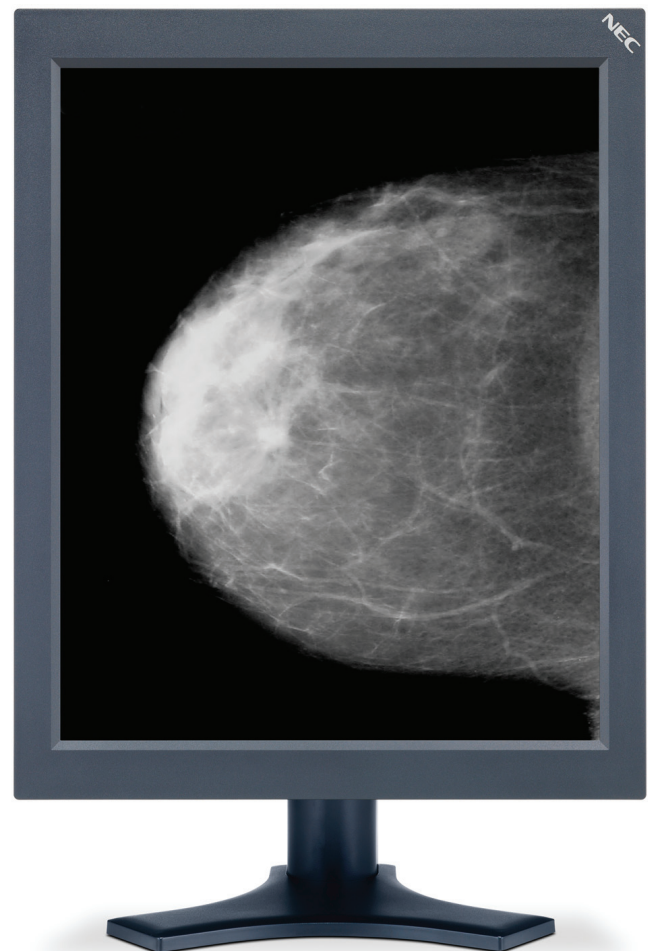


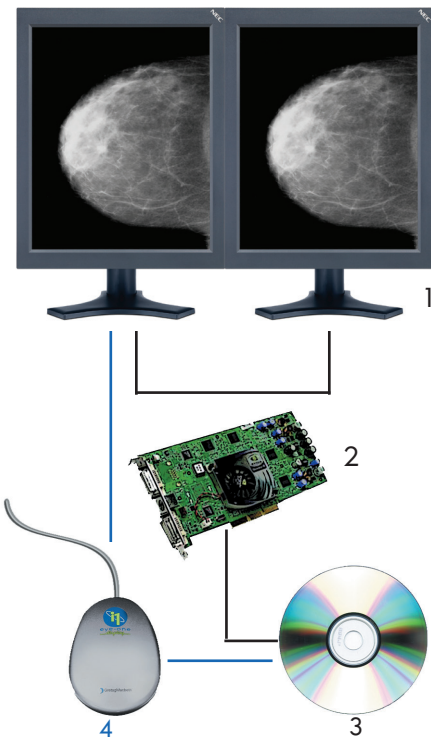
# NEC MultiSync® MD205MG

20.1" grayscale medical-grade LCD display  
ideal for ultra-high-resolution diagnostic imaging

- Specially designed for demanding applications including mammography and radiology, the 20.1" NEC MultiSync MD205MG (5MP display) features a resolution of 2048 x 2560 and a pixel pitch value of less than or equal to 0.156mm for film-like image reproduction without pixelization
- NEC's Super Advanced SFT In-Plane Switching (IPS) LCD technology provides accurate grayscale reproduction as well as fast response times for moving images and extremely wide viewing angles
- 11.5-bit lookup table (LUT) and 10-bit conversion algorithm and dithering technology reproduces up to 1024 shades of gray from a palette of 3061.
- DICOM GSDF conformance produces images that are visible in a linear manner to the human eye, guaranteeing precise image reproduction for diagnosis
- Integrated backlight sensor constantly monitors and adjusts brightness and maintains the factory DICOM GSDF calibration.
- With its DICOM calibration, 10-bit conversion algorithm and dithering technology, and clear, precise images, the MD205MG has been built to support the most demanding Picture Archiving and Communication Systems (PACS) and modality requirements
- The MD205MG's design combines the best in form and function to meet ergonomic standards and provide users with flexibility and ease of use. Features include a durable base that can be easily adjusted for tilt, swivel and height based on the user's preferences. The VESA-compliant display also pivots between portrait and landscape orientation.
- FDA 510(k) approved for use in digital mammography applications, meeting the highest standards for diagnostic displays
- Design includes durable base that easily adjusts for tilt, swivel, height and portrait/landscape orientation



**NEC MULTISYNC MD SERIES** The clear choice in diagnostic displays.



**A typical NEC MultiSync MD Series display system configuration**

- 1 Single or dual head displays
- 2 Display controller board
- 3 GammaComp MD quality control software
- 4 Calibrator (optional)

**Industry-leading standard limited warranty**

- 5 years
- Advanced Overnight Exchange ships a replacement monitor to arrive the next business day with NEC covering the cost of shipping both ways

<b>Model</b>	<b>MultiSync MD205MG</b>
<b>LCD Viewable Image Size</b>	20.1"
<b>LCD Module Technology</b>	SA-Superfine Grayscale TFT Glass
<b>Active Screen Area</b>	31.9 x 39.9 cm
<b>Native Resolution</b>	2560 x 2048 Landscape/2048 x 2560 Portrait
<b>Pixel Pitch</b>	0.156mm
<b>Brightness at Native (typical)</b>	850 cd/m <sup>2</sup> max / 400 cd/m <sup>2</sup> calibrated
<b>Contrast Ratio (typical)</b>	600:1
<b>Response Time (typical)</b>	30ms
<b>Viewing Angle (typical) (up/down/left/right)</b>	85°/85°/85°/85°
<b>Grayscale Tone</b>	10-bit: 1024 shades of gray from a pallet of 3061
<b>Input Connectors</b>	Dual Link DVI-D
<b>Selectable Gamma</b>	DICOM, log-linear, 2.2 and programmable
<b>Factory calibration</b>	Gamma correction according to DICOM GSDF with automatic adjustment
<b>X-Ray film simulation</b>	Clear Base
<b>Power Supply</b>	Internal, AC 100-240V, 50/60 Hz nominal
<b>Power Consumption (typical)(120V)</b>	65W
<b>Power Savings</b>	< 3W
<b>Tilt / Swivel Stand</b>	+30°, -5° / 340°
<b>Height Adjustable Stand</b>	120mm
<b>Pivot Enabled Stand</b>	Yes
<b>VESA Mounting</b>	100 x 100mm
<b>Dimensions (WxHxD)</b>	18.7 x 18.3 x 9.7 in. / 474.3 x 465.3 x 247.3mm (Landscape) 14.9 x 20.2 x 9.7 in. / 379.6 x 512.7 x 247.3mm (Portrait)
<b>Bezel Width</b>	28mm
<b>Net Weight, including stand</b>	25.8 lbs. / 9.8 kg.
<b>Regulatory Standards</b>	UL2601/EN60601-1/EC601, FCC part 15 class B, CE/MDD, PCT, C-tick, PCBC/B Mark, PSB, EnergyStar, GEEA Energy Label, DIN 6868-57, FDA-510(k)
<b>Display Video Cards (preferred)</b>	MDRV10B-5MP
<b>Remote Network Sensor (optional)</b>	Sentry <sup>DX</sup> (MD-N2M5B)
<b>Colorimeter</b>	GammaComp MD Sensor (MDSVSENSOR)
<b>Limited Warranty*</b>	5 years parts and labor, including Advanced Overnight Exchange
<b>Extended Warranty (addtl. 1 yr./addtl. 2 yr.)</b>	EW1-MD2MP21 / EW2-MD2MP21

\* Backlight usage limited to 30,000 hours at 400 cd/m<sup>2</sup> or less

<b>Display video card</b>	MDRV10B-5MP
<b>Bus Interface</b>	PCIe x 1
<b>Output Signal</b>	DVI x 2 / 8- or 10-bit grayscale
<b>Display Resolutions (portrait)</b>	2048 x 2560 (single head) / 4096 x 2560 (dual head)
<b>Dot Clock</b>	165 Mhz
<b>Maximum Power Consumption</b>	25.8W
<b>System Requirements</b>	
<b>Compatible OS</b>	Microsoft Windows XP / 2000 / XP x64
<b>Host Processor Frequency</b>	500 MHz or greater
<b>Main Memory</b>	256 MB or greater

NOTE 1: American College of Radiology (ACR) recommends minimum of 171 cd/m<sup>2</sup>



MultiSync is a registered trademark of NEC Display Solutions. All other brand or product names are trademarks or registered trademarks of their respective holders. Product specifications subject to change. 12/09 Ver. 3.

©2009 NEC Display Solutions of America, Inc. All rights reserved.

**NEC Display Solutions**

500 Park Boulevard, Suite 1100  
Itasca, IL 60143  
866-NEC-MORE

