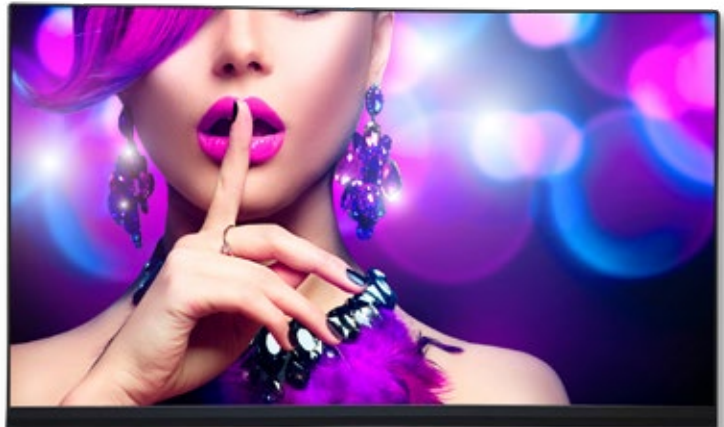


# LED-FE019i2-165

## 165" Indoor LED 1.90mm Full HD Bundle

### Datasheet



### Nothing less than magnificent

For vibrant LED imaging in a cost effective package, NEC's fine pitch LED FE Series bundles provide impressive content visualization for applications in meeting spaces and exclusive signage. With a depth of just 3.2in., plus complete internal cabling, the FE series presents a sleek profile for a bezel-free viewing experience. With excellent viewing angles, consistent vibrant colors and remarkable brightness; the FE Series delivers content that gets noticed. This Full HD bundle is designed for viewing from 4ft to an optimal 10ft and includes everything required to install an LED wall, including a power bar, framing, mounting and controller. Designed with high quality components and maintenance access from the front, the FE Series provides a display solution with longevity and good return on investment. The FE Series bundles are the prime solution for boardrooms, auditoriums, retail and airport signage.

### Benefits

**16:9 Aspect Ratio** – enabling standard Full HD content to be utilized, saving time and cost in content creation.

**Quality product** – designed and tested in Germany, LED fine pitch product of the highest quality.

**Ultimate Versatility** – small 16:9 modules allowing excellent flexibility within the available space.

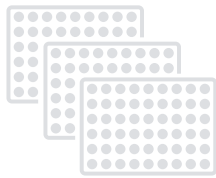
**Secure Investment** – the intelligent cabinet design allows for upgrade to higher resolutions.

**Excellent Homogeneity** – uniform color and brightness across the entire wall.

**Outstanding Picture Quality** – through the use of Multi-Color LEDs.

Direct View LED Module		LED-FE019i2
DISPLAY	Panel Technology	Direct View LED
	Pixel Configuration	3-1 SMD (Black)
	Panel Resolution	1920 x 1080
	Aspect Ratio	16:9
	Pixel Pitch	1.9mm
	Brightness (typical)	700cd/m <sup>2</sup>
	Contrast Ratio (typical)	4000:1
	Viewing Angle (typical)	80/80 horizontal / 80/80 vertical
	Dimming Capability	256 levels
	Color Processing	Up to 16 bit
	Displayable Colors	281 Trillion
	Refresh Rate	Up to 3840 Hz
	Lifetime	100,000 Hours
CONNECTIVITY	Input Terminals Digital	1 x 3G SDI; 1 x DVI-D; 1 x HDMI
	External Control	1 x GenLock; 1 x LAN
POWER CONSUMPTION	On (typical)	2052 Watts
	Max	4500 Watts
PHYSICAL SPECIFICATIONS	Dimensions (W x H x D)	145.2 x 85.5 x 3.2in / 3688 x 2172 x 81mm
	Weight (Net)	882.8lbs / 400.4kg
ENVIRONMENTAL CONDITIONS	Operating Temperature	-4° to 104°F / -20° to 40°C
	Operating Humidity	10% to 80%
	Storage Temperature	-4° to 113°F / -20° to 45°C
	Storage Humidity	10% to 85%
	IP Rating	IP20
SHIPS WITH	1x LED Controller, LED Modules (36 Cabinets, 288 Pixel Cards), Overframe Kit (6x6), Pixel Card Removal Tool, Power Bar; Spare Parts Kit, Wall Mount (6x6)	
LIMITED WARRANTY	3 years	

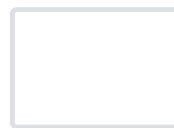
## Every bundle ships with



LED Modules



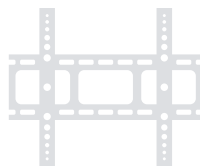
Power Bar



Overframe

Pixel Card  
Removal Tool

Spare Parts



Wallmount



LED Controller

All other brand or product names are trademarks or registered trademarks of their respective holders. Product specifications subject to change.

©2022 Sharp NEC Display Solutions of America, Inc. | All rights reserved.

Cat.No. 25.NEC.80.GL.UN.356 | Rev. 08.12.2022