

# SHARP

EP-C131  
EP-C251  
EP-CA22

ePaper - 13", 25" and 28.6" Class Sizes



Always on display even when power is turned off



watt power consumption from the panel



Easy to see in bright locations



Looks like paper



Wide viewing angle



No backlight - no blue light



Manually or Automatically switch images

# Sharp Advanced Color ePaper (ACeP) Displays

## Marking a new era in energy-efficient signage solutions.

Advanced Color ePaper (ACeP) displays are a digital alternative to paper posters, consuming a remarkable minimum of zero watts of power when showing a static image. The Sharp ePaper display features always-on visibility and only draws minimal power when updating the displayed image. These displays are taking a significant step forward toward the carbon-neutral era.

A digital alternative to paper posters, Advanced Color ePaper presents static content that's always on display. Ideal for applications requiring static content with regular updates, such as POS promotions, menu boards, allergen and nutritional information in retail and hospitality environments, timetables, or checkin and gate information in transportation environments.

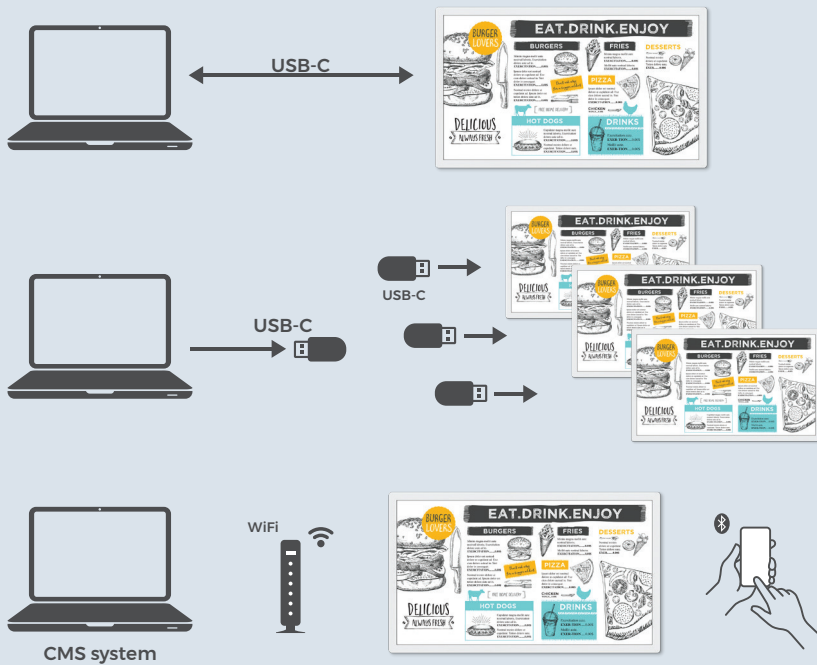
The displays ensure unimpaired readability in both the brightest environments, as well as in semi-outdoor settings, presenting static digital images with a low reflection and paper-like quality. With full-color capability enhanced by ACeP color performance, they deliver outstanding visual performances with excellent contrast, wide viewing angles, and fine resolution for an ergonomic content presentation that looks remarkably like paper. The paper-like appearance is easy on the eyes with no reflections or blue light, underlining Sharp's commitment to sustainability and viewer comfort.

An integrated System on a Chip (SoC) secures an intelligent and future-proof operation, effortlessly delivering content through Content Management System (CMS) partners or offering a user-friendly experience with the simplest content management options via USB-C, WiFi, or Bluetooth.

The Sharp ePaper displays offer quick and flexible installation options. Their slim, lightweight design supports landscape, portrait, face-up, and face-down operation with multiple mounting points, not only enhancing aesthetics but also providing space for an optional battery for versatile power solutions.

### Easy Content Management

Simple and convenient configuration and content distribution via PC, USB-C, Wifi or Bluetooth



### Easy Setup Using the EP Setting Tool

- Direct PC connection using USB-C
- Transfer a single image or multiple

### Easy Rollout

- Create a USB-C drive to speed up the setup of multiple devices
- Include WiFi configuration and/or images

### Rewrite the Display Wirelessly

- Connect over WiFi and Bluetooth
- Manage and automate the content from CMS systems

### Configuration of Power Adapter

By using a commercially available portable charger, you can use the displays even in places where there is no power supply.

### Controls

The Mode button offers the capability to switch between Manually or Automatically switching images. The Pairing button allows for connection to mobile devices to update content to the display.







### As Easy to Read as Paper

The ePaper displays are a reflective technology with no backlight and offer nearly 180° viewing angle. The paper-like appearance is easy on the eyes, even when viewed for long periods of time. The displays ensure excellent visibility in both the brightest environments, as well as semi-outdoor settings. Full-color capability is enhanced by ACeP color performance, delivering outstanding visual performance with great contrast and fine resolution for ergonomic presentation of content.

### Zero Power Consumption

Playback of static digital images with zero power consumption, electric power is only needed when changing content.

### Signage

Perfect for retail applications such as wayfinding and special sales.

### Unimpaired Readability

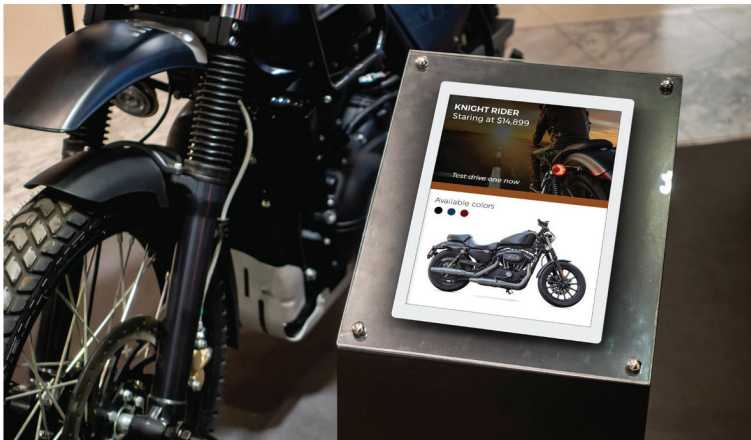
Even under the brightest ambient conditions, low reflective, paper-like presentation of static images.

### Easy to Install

The thin lightweight design allows for easy and flexible installation. It also enables installation in locations that could not be achieved with existing displays.

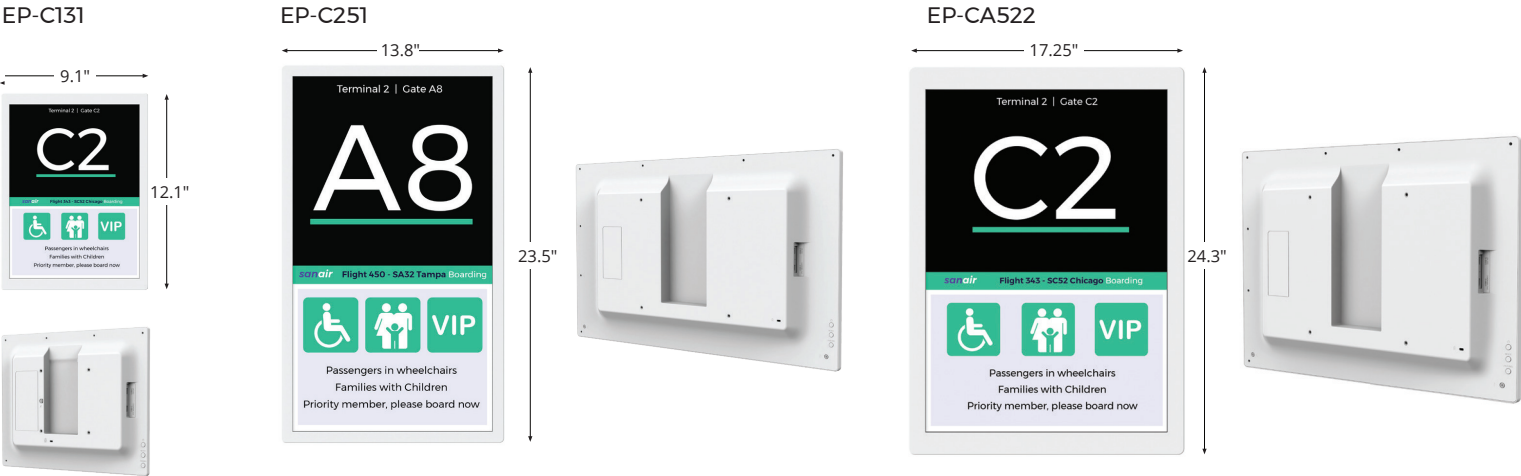
### Digital Alternative to Static Signs

Removes the requirements for print ads while saving the environment. Can also be used as a placard providing a lower TCO.



Specifications

Model		EP-C131		EP-C251		EP-CA22	
DISPLAY	Panel Technology	ACeP					
	Backlight Type	None					
	Viewable Image Size	13.3"		25.3"		28.6"	
	Aspect Ratio	4X3		16X9		1.4:1	
	Native Resolution	1600x1200		3200x 1800		2160x3060	
	Pixel Pitch	0.169		0.175		0.194	
	Supported File Formats	*.jpg, *.jpeg, *.bmp, *.png					
	Input Connectors	USB-C					
HARDWARE	Processor	Arm® Cortex®-A55 processor (quad core)					
	Memory	2GB					
	Storage	8GB (eMMC)				16GB (Free area: 14GB)	
	Network	1x4					
SOFTWARE	OS	Android OS 11					
	Pre-installed Applications	e-Signage S Player A1					
POWER CONSUMPTION	Max	15 / 1		30 / 1			
	On (typical)	0W					
	Input Current Max	3A					
PHYSICAL SPECIFICATIONS	Dimensions (WxHxD)	12.1 x 0.8 x 9.1 in. / 306.4 x 20.9 x 229.9 mm		23.5 x 1.2 x 13.8 in. / 596 x 19.3 x 351.6 mm		24.3 x 0.6 x 17.25 in. / 430 x 15 x 438 mm	
	Net Weight	1.5 lbs. / 0.7 kg		4.2 lbs. / 1.9 kg		5.1 lbs. / 2.3 kg	
	VESA Hole Configuration	100 x 100mm		200 x 200mm			
	Anti Theft Hole	Yes					
ENVIRONMENTAL CONDITIONS	Operating Temperature	TBD					
	Operating Humidity	32-122°F / 0-50°C					
	Storage Temperature	68-140°F / 20-60°C					
	Storage Humidity	10% - 90% (non-condensing)					
REGULATION		TBD					
ADDITIONAL FEATURES		TBD					
SHIPS WITH		Power Cord, AC Adapter, Clamp, Operation Manual, Warranty Card, Hanging Hook, Paper Stand, Stand attention instructions					
LIMITED WARRANTY		Registered owners receive a 3-years parts and labor warranty.					



SHARP ELECTRONICS CORPORATION  
100 Paragon Drive, Montvale, NJ 07645  
1-800-BE-SHARP • www.sharppusa.com

©2024 Sharp Electronics Corporation. All rights reserved. Sharp is a registered trademark of Sharp Corporation and/or its affiliated companies. All other trademarks are the property of their respective owners.