

NEC Direct View LED-FE025i2 (2.53mm FE-Series Indoor)



NEC Direct View LED - Intelligent display solutions for a brighter world

The NEC FE Series provides vibrant LED imaging in a cost effective package. With 6 different fine pixel pitches (1.2mm, 1.5mm, 1.9mm, 2.5mm, 3.1mm and 3.8mm) the optimum display resolution can be achieved regardless of viewing distance. Boardrooms, auditoriums, retail and airport signage, situational awareness, and museums are just some of the applications where the NEC FE series is designed to be integrated. The FE Series is engineered with Kinglight LEDs that deliver excellent imaging at a low cost and have no

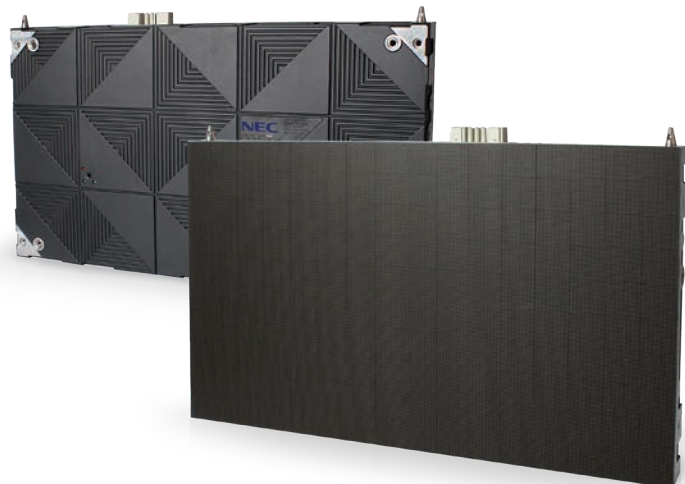
external cables required for installation. NEC offers full planning and design, installation and post installation maintenance support, ensuring you get a custom tailored solution allowing you to focus on what's most important - your business.

Benefits

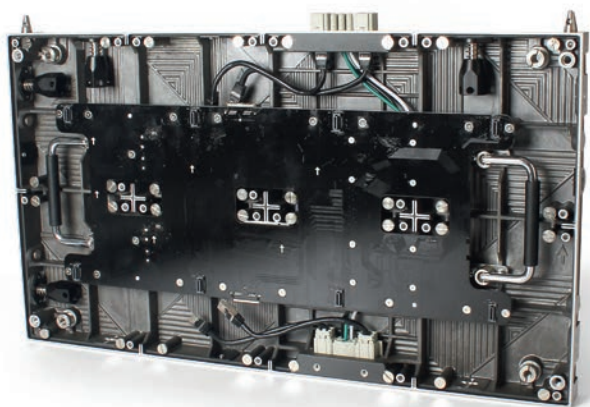
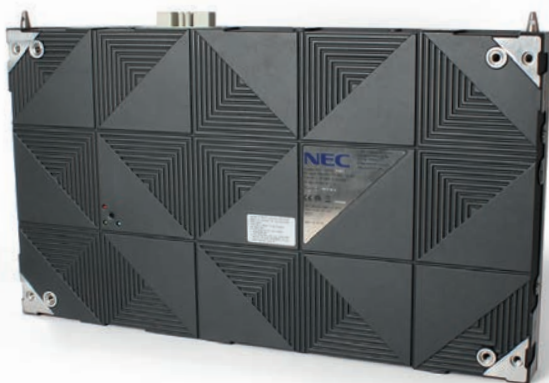
Front Serviceable Design minimizes downtime by providing easy access and quick maintenance

Hot-Swappable Pixel Cards can be replaced without turning the display off

Black SMD Kinglight LED's provide a smooth surface, low reflectance and high contrast



NEC Direct View LED-FE025i2 (2.53mm FE Series Indoor) - Technical Specification



Direct View LED Kit		LED-FE025i2
Display	Panel Technology	Direct View LED
	Pixel Configuration	3-1 SMD (Black)
	Panel Resolution	240 x 135
	Aspect Ratio	16:9
	Pixel Pitch	2.53mm
	Brightness (typical)	1000cd/m ²
	Contrast Ratio (typical)	5000:1
	Viewing Angle (typical)	80/80 horizontal / 70/70 vertical
	Dimming Capability	256 levels
	Color Processing	Up to 16 bit
	Displayable Colors	281 Trillion
	Refresh Rate	Up to 3840 Hz
CONNECTIVITY	Input Terminals Digital	1x 1000BaseT RJ-45
	External Control	RS232 / USB
POWER CONSUMPTION	On (typical)	47 Watts
	Max	120 Watts
PHYSICAL SPECIFICATIONS	Dimensions (W x H x D)	23.9 x 13.5 x 1.9 in / 608 x 342 x 49 mm
	Weight (Net)	19.4lbs / 8.8kg
ENVIRONMENTAL CONDITIONS	Operating Temperature	-4° to 104°F / -20° to 40°C
	Operating Humidity	10% to 80%
	Storage Temperature	-4° to 113°F / -20° to 45°C
	Storage Humidity	10% to 85%
	IP Rating	IP20
LIMITED WARRANTY		2 years

All rights reserved in favor of their respective owners. All hardware and software names are brand names and/or registered trademarks of the respective manufacturers. All specifications are subject to change without notice.