

NEC Direct View LED-FE015i2 (1.58mm FE-Series Indoor)



NEC Direct View LED – Intelligent display solutions for a brighter world

The NEC FE Series provides vibrant LED imaging in a cost effective package. With 7 different fine pixel pitches (0.95mm, 1.2mm, 1.5mm, 1.9mm, 2.5mm, 3.1mm, and 3.8mm) the optimum display resolution can be achieved regardless of viewing distance. Boardrooms, auditoriums, retail and airport signage, situational awareness, and museums are just some of the applications where the NEC FE series is designed to be integrated. The FE Series is engineered with Multi-Color LEDs that deliver excellent imaging at a low cost and have no

external cables required for installation. NEC offers full planning and design, installation and post installation maintenance support, ensuring you get a custom tailored solution allowing you to focus on what's most important – your business.

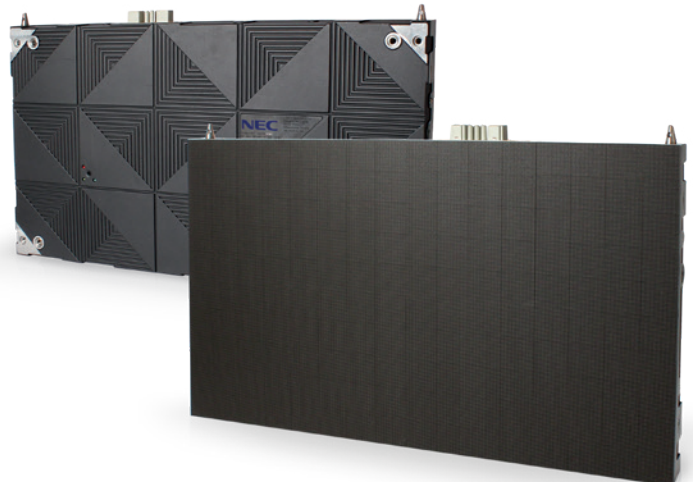
Benefits

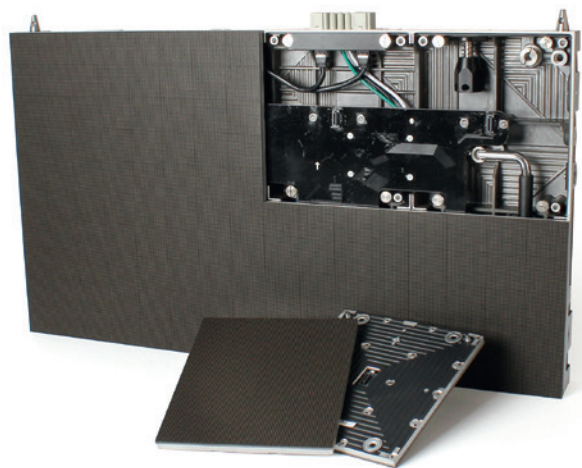
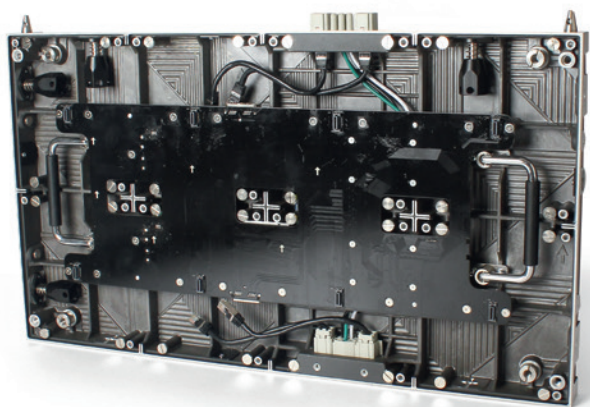
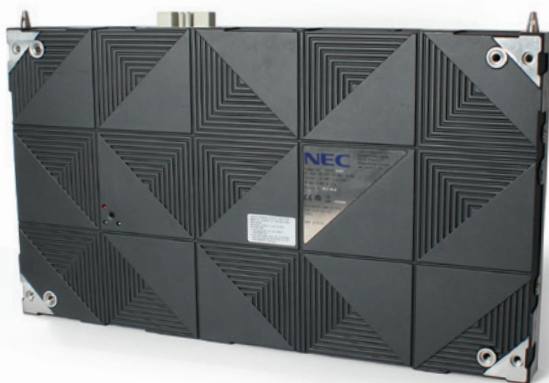
Front Serviceable Design minimizes downtime by providing easy access and quick maintenance

Upgradeable Pixel Cards can be upgraded to a finer pixel pitch without changing the modules or mounting structure

Hot-Swappable Pixel Cards can be replaced without turning the display off

Black SMD Multi-Color LED's provide a smooth surface, low reflectance and high contrast





Direct View LED Kit		LED-FE015i2
Display	Panel Technology	Direct View LED
	Pixel Configuration	3-1 SMD (Black)
	Panel Resolution	384 x 216
	Aspect Ratio	16:9
	Pixel Pitch	1.58mm
	Brightness (typical)	700cd/m ²
	Contrast Ratio (typical)	4000:1
	Viewing Angle (typical)	80/80 horizontal / 80/80 vertical
	Dimming Capability	256 levels
	Color Processing	Up to 16 bit
	Displayable Colors	281 Trillion
	Refresh Rate	Up to 3840 Hz
Lifetime	100,000 Hours	
CONNECTIVITY	Input Terminals Digital	1x 1000BaseT RJ-45
	External Control	RS232 / USB
POWER CONSUMPTION	On (typical)	57 Watts
	Max	125 Watts
PHYSICAL SPECIFICATIONS	Dimensions (W x H x D)	23.9 x 13.5 x 1.9 in / 608 x 342 x 49 mm
	Weight (Net)	19.4lbs / 8.8kg
ENVIRONMENTAL CONDITIONS	Operating Temperature	-4° to 104°F / -20° to 40°C
	Operating Humidity	10% to 80%
	Storage Temperature	-4° to 113°F / -20° to 45°C
	Storage Humidity	10% to 85%
IP Rating	IP20	
LIMITED WARRANTY		3 years