

# NEC Direct View LED-FC015i

## (1.58mm FC-Series Indoor)



### NEC Direct View LED – Intelligent display solutions for a brighter world

The NEC FC Series provides stunning visuals in a durable package designed for high traffic environments. With 3 different fine pixel pitches (0.95mm, 1.2mm, and 1.5mm) the optimum display resolution can be achieved for close viewing distances. The durability, high contrast ratio, and brightness of the FC series make it ideal for retail, transportation, museums, public spaces, and more. The FC series uses the latest flip chip COB technology to deliver reliable and stunning imaging in the most demanding environments. NEC offers

full planning and design, installation, and post installation maintenance support, ensuring you get a custom-tailored solution allowing you to focus on what's most important – your business.

#### Benefits

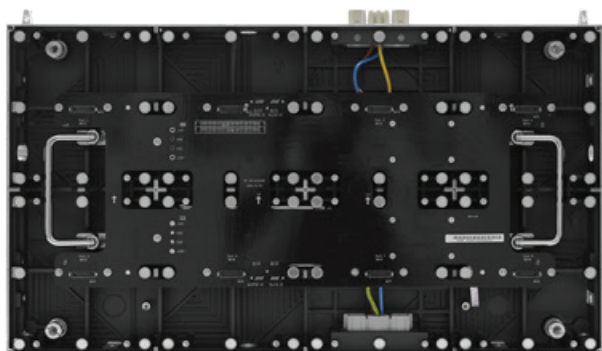
**Front Serviceable Design** minimizes downtime by providing easy access and quick maintenance

**Durable Construction** ensures peace of mind operating in high-traffic environments

**Hot-Swappable Pixel Cards** can be replaced without turning the display off

**COB (Flip Chip) Multi-Color LEDs** provide unmatched contrast and brightness in a durable, reliable package





Direct View LED Module		LED-FC015i
Display	Panel Technology	Direct View LED
	Pixel Configuration	COB (Flip Chip)
	Panel Resolution	384 x 216
	Aspect Ratio	16:9
	Pixel Pitch	1.58mm
	Brightness (typical)	800cd/m <sup>2</sup>
	Contrast Ratio (typical)	20,000:1
	Viewing Angle (typical)	80/80 horizontal / 80/80 vertical
	Dimming Capability	256 levels
	Color Processing	Up to 16 bit
	Displayable Colors	281 Trillion
	Refresh Rate	Up to 3840 Hz
Lifetime	100,000 Hours	
CONNECTIVITY	Input Terminals Digital	1x 1000BaseT RJ-45
	External Control	RS232 / USB
POWER CONSUMPTION	On (typical)	36 Watts
	Max	65 Watts
PHYSICAL SPECIFICATIONS	Dimensions (W x H x D)	23.9 x 13.5 x 1.9 in / 608 x 342 x 49 mm
	Diagonal	27"
	Weight (Net)	15.4lbs. / 7.0kg
ENVIRONMENTAL CONDITIONS	Operating Temperature	-4° to 104°F / -20° to 40°C
	Operating Humidity	10% to 80%
	Storage Temperature	-4° to 113°F / -20° to 45°C
	Storage Humidity	10% to 85%
	IP Rating	IP40
LIMITED WARRANTY	3 years	

