

NEC Direct View LED-E012i (1.25mm E-Series Indoor)



NEC Direct View LED – Intelligent display solutions for a brighter world

The NEC E Series provides cost conscience customers impressive LED imaging without compromising on the service and support expected from the Sharp/NEC brand. With 4 popular different pixel pitch options (1.2mm, 1.5mm, 1.8mm, and 2.5mm) the optimum display resolution can be achieved regardless of viewing distance. The E Series is designed to deliver the advantages of a seamless dvLED display in a cost effective, accessible package. Boardrooms, auditoriums, retail, and education are just some of the applications where the

NEC E series is designed to be integrated. NEC offers full planning and design, installation and post installation maintenance support, ensuring you get a custom tailored solution allowing you to focus on what's most important – your business.

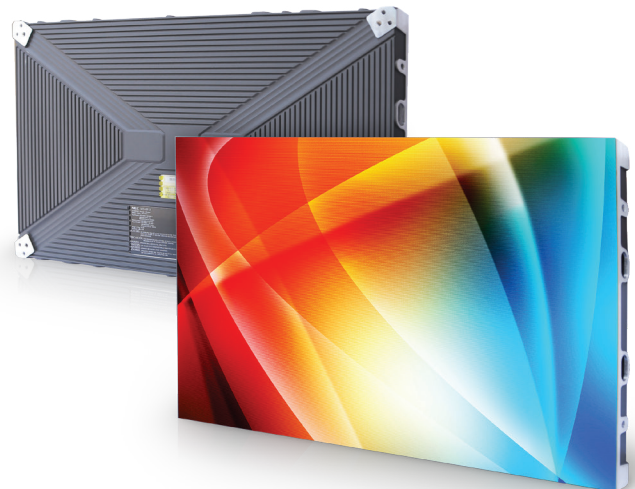
Benefits

Front Serviceable Design minimizes downtime by providing easy access and quick maintenance

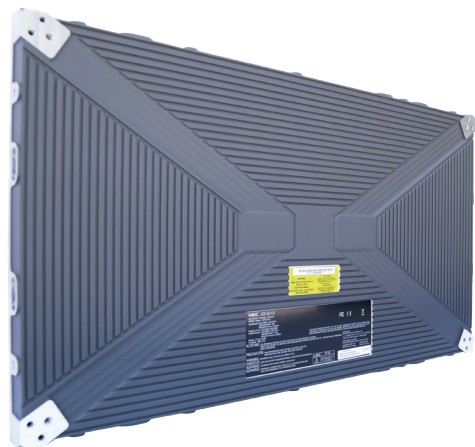
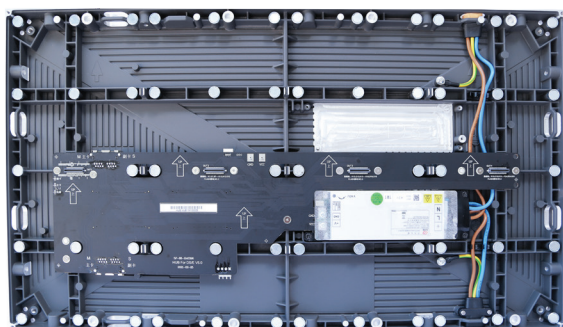
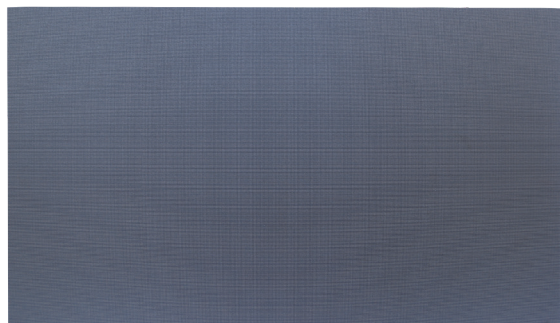
Modular Design with a 16:9 aspect ratio and a 27" diagonal allows for an accessible alternative to existing LCD video walls

Hot-Swappable Pixel Cards can be replaced without turning the display off

Thin and lightweight design allow for greater installation flexibility while also meeting ADA requirements



NEC Direct View LED-E012i (1.25mm E Series Indoor) - Technical Specification



Direct View LED Module		LED-E012i
Display	Panel Technology	Direct View LED
	Pixel Configuration	3-1 SMD (Black)
	Panel Resolution	480 x 270
	Aspect Ratio	16:9
	Pixel Pitch	1.25mm
	Brightness (typical)	600cd/m ²
	Contrast Ratio (typical)	5000:1
	Viewing Angle (typical)	85/85 horizontal / 80/80 vertical
	Dimming Capability	256 levels
	Color Processing	Up to 16 bit
	Displayable Colors	281 Trillion
	Refresh Rate	Up to 3840 Hz
Lifetime	100,000 hours	
CONNECTIVITY	Input Terminals Digital	1x 1000BaseT RJ-45
	External Control	RS232 / USB
POWER CONSUMPTION	On (typical)	59 Watts
	Max	125 Watts
PHYSICAL SPECIFICATIONS	Dimensions (W x H x D)	23.6 x 13.3 x 1.1in / 600 x 337.5 x 29mm
	Diagonal	27"
	Weight (Net)	10.4lbs / 4.7kg
ENVIRONMENTAL CONDITIONS	Operating Temperature	-4° to 104°F / -20° to 40°C
	Operating Humidity	10% to 80%
	Storage Temperature	-4° to 113°F / -20° to 45°C
	Storage Humidity	10% to 85%
	IP Rating	IP20
LIMITED WARRANTY		2 years

Sharp NEC Display Solutions of America

www.sharpnecdisplays.us